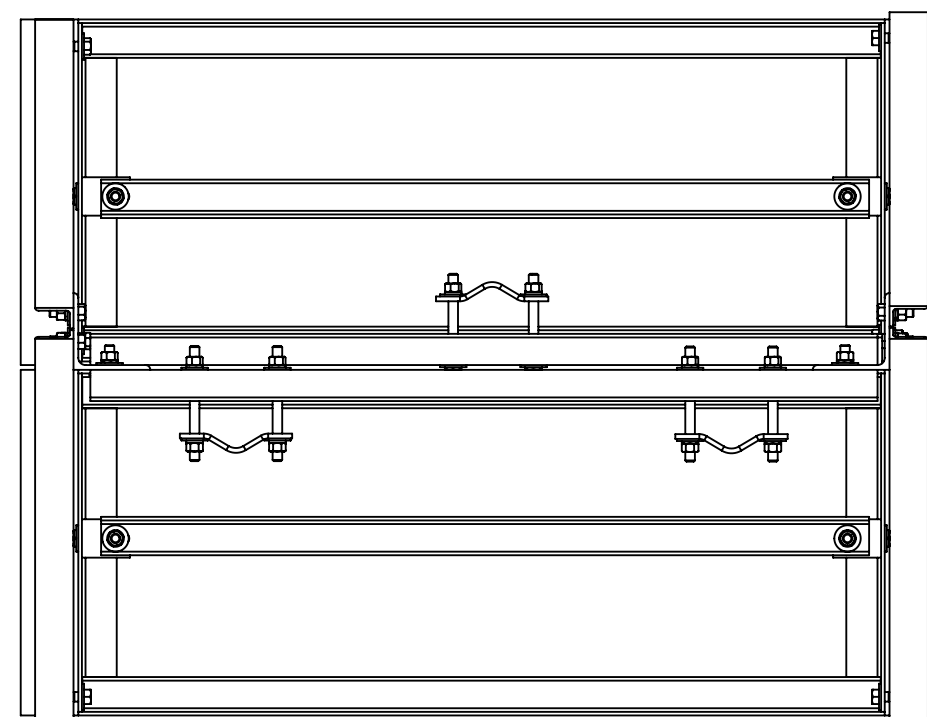
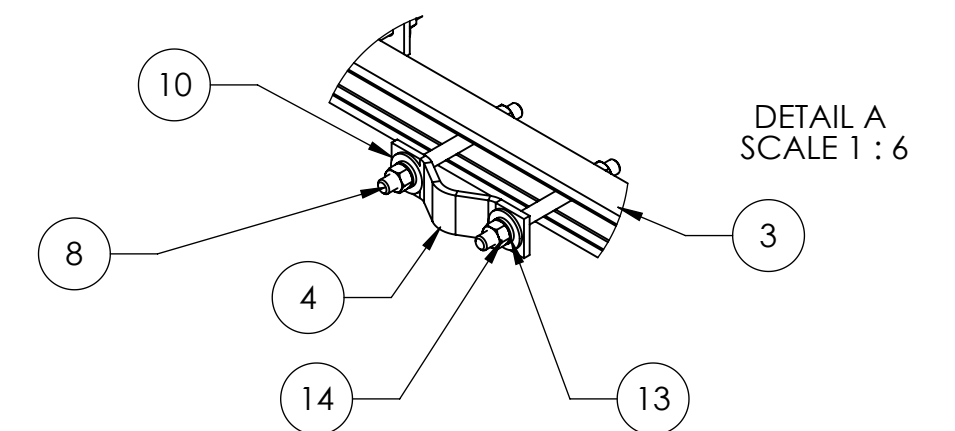
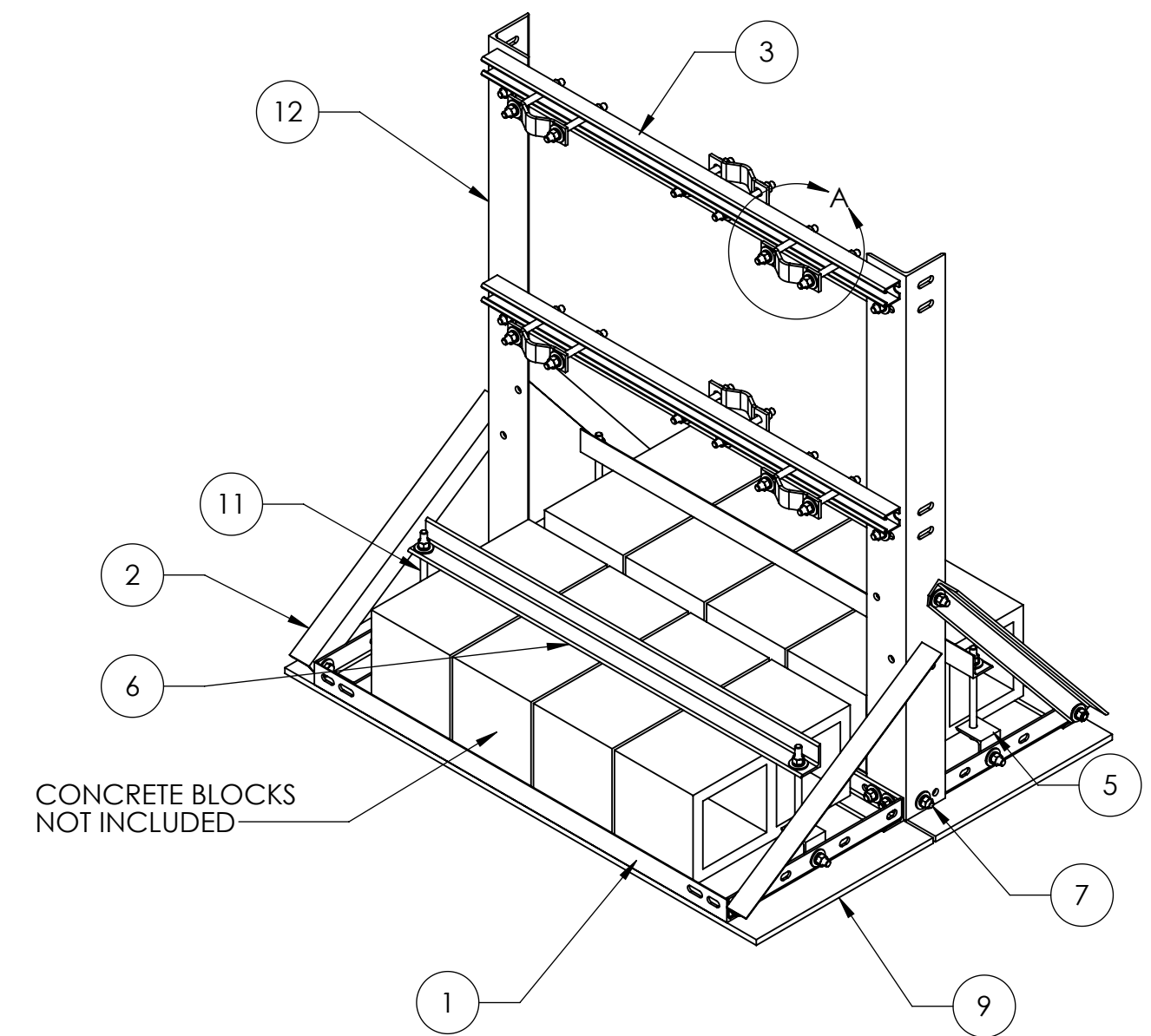
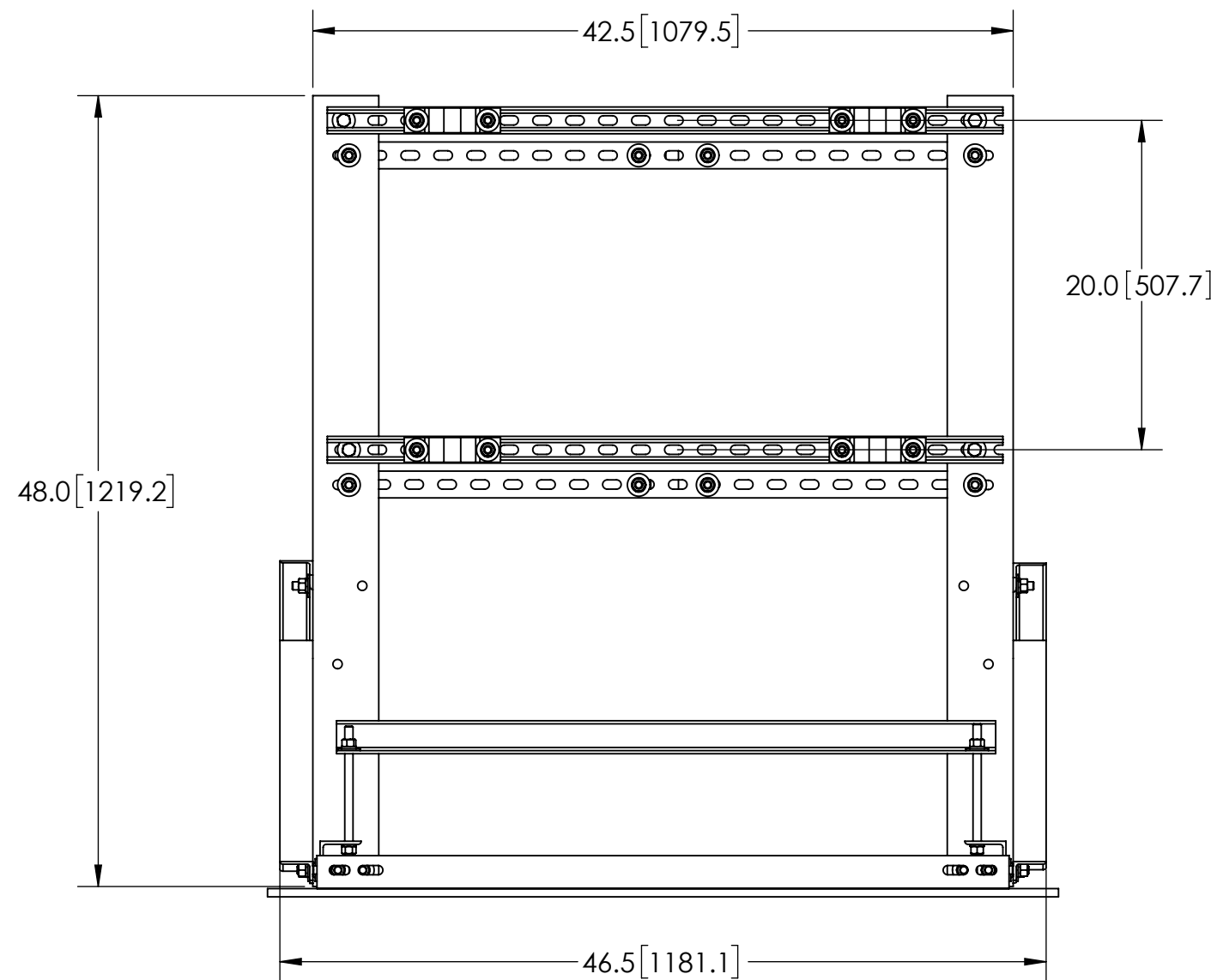
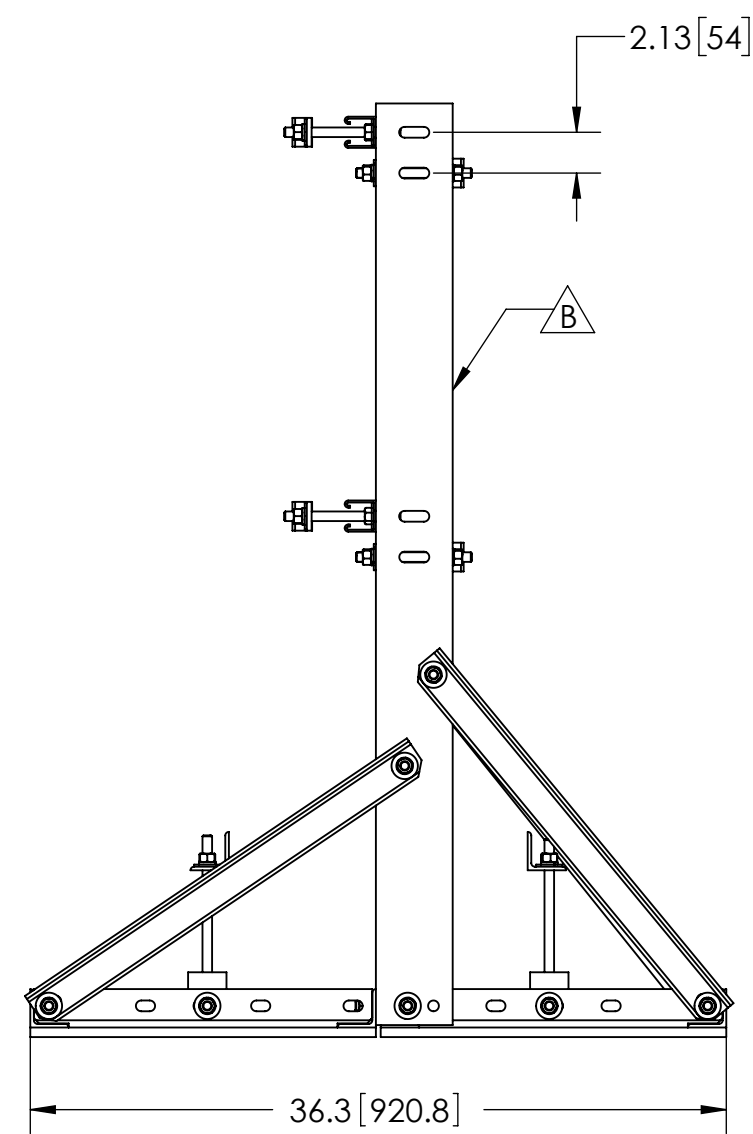


NOTES:

- 1.0 GENERAL
- 1.1 ALL METRIC DIMENSIONS ARE IN BRACKETS
- 1.2 FOR PATENTS, SEE WWW.CS-PAT.COM
- 2.0 DESIGN NOTES
- 3.0 MANUFACTURING/SPECIAL REQUIREMENTS
- 4.0 TEST
- 5.0 PACKAGING

| REVISIONS | | | | |
|-----------|------------|--------------------------|--------|----------|
| REV. | ECN | DESCRIPTION | BY | DATE |
| A | | INITIAL RELEASE | MSM | 05/31/12 |
| B | 8000039016 | UPDATED VERTICAL SUPPORT | ES1081 | 01/21/20 |



| ITEM | PART NO. | DESCRIPTION | QTY. | WEIGHT |
|------|------------|-----------------------------|------|-----------|
| 1 | MT416.10 | WELDMNT BALLAST SLED FRAME | 2 | 22.31 LBS |
| 2 | MTC329421 | BRACE ANGLE | 4 | 4.71 LBS |
| 3 | MTC329414 | 1 5/8" UNISTRUT | 4 | 6.12 LBS |
| 4 | ACP10 | 1.5" - 3.5" O.D. CLAMP HALF | 6 | 0.61 LBS |
| 5 | MTC8326.01 | CLIP ANGLE | 4 | 0.478 LBS |
| 6 | MTC329422 | BRACE ANGLE | 2 | 7.92 LBS |
| 7 | GB-04145 | 1/2" X 1-1/2" GALV BOLT KIT | 26 | 0.13 LBS |
| 8 | MT-379-6 | 1/2" X 6" GALV THREADED ROD | 12 | 0.33 LBS |
| 9 | MT-F1637 | RUBBER MAT .5" X 18" X 48" | 2 | 15.61 LBS |
| 10 | GWF-04 | 1/2" GALV FLAT WASHER | 68 | 0.04 LBS |
| 11 | MT-379-8 | 1/2" X 8" GALV THREADED ROD | 4 | 0.45 LBS |
| 12 | MTC329417 | VERTICAL SUPPORT ANGLE | 2 | 25.65 |
| 13 | GWL-04 | 1/2" GALV LOCK WASHER | 32 | 0.01 LBS |
| 14 | GN-04 | 1/2" GALV HEX NUT | 32 | 0.04 LBS |

COMMSCOPE, INC. OF NORTH CAROLINA

SAP MATERIAL MASTER
RR-TFS3

| | | | |
|---|--------------------|--|------------|
| TOLERANCES | | SAP MATERIAL MASTER | |
| 1 PLACE .X± .25 | 3 PLACE .XXX± 0.06 | RR-TFS3 | |
| 2 PLACE .XX± 0.12 | ANGLES ± 2° | | |
| FINISH GALV A123 | | MATERIAL A529 GR 50 | |
| UNLESS OTHERWISE SPECIFIED DIMENSIONS ARE IN INCHES INTERPRET PER ANSI Y 14.5M-1994 | | TITLE FREESTANDING 3 RRU MOUNT | |
| CE | ES1081 | DATE | 01/23/20 |
| RW | ES1081 | DATE | 01/27/2020 |
| RV | | DATE | 01/29/2020 |
| AD | MC1107 | DATE | 01/30/2020 |
| RE | BCROSS | DATE | 01/30/2020 |
| ECN 008000039016 | | SCALE | 1:16 |
| SIZE | | WORK AREA | 24 |
| MODEL | | DRAWING | |
| VERSION | STATUS | REVISION | VERSION |
| 02 | RE | | 02 |
| STATUS | | REVISION | STATUS |
| RE | | | RE |
| SHEET | | 1 OF 1 | |

| | | |
|--------------|----------|---------------------|
| DENSITY | 206.88 | lbs/in ³ |
| MASS | 4687.34 | lbs |
| VOLUME | 17941.57 | in ³ |
| SURFACE AREA | | in ² |
| HEIGHT | | |
| LENGTH | | |
| WIDTH | | |