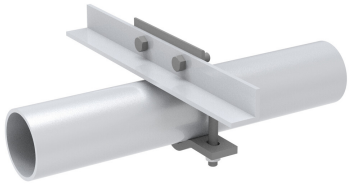


# TES-SS-MSK7 | PIPE TO ANGLE CROSSOVER KIT

---



Pipe to Angle Cross Over Plate, Mounts up to 4-1/2" Pipe to Angled member, Pipe/Angle not included

## Product Classification

**Product Type** Clamp plate

## General Specifications

**Mounting** Crossover plate

## Dimensions

**Mounting Diameter, maximum** 4.5 in | 114.3 mm

## Material Specifications

**Material Type** Hot dip galvanized steel

## Environmental Specifications

**EPA with 1/2 in (12 mm) radial ice** ft<sup>2</sup>

## Packaging and Weights

**Included** Clamp assembly

**Packaging quantity** 1

## \* Footnotes

**EPA with 1/2 in (12 mm) radial ice** EPA—Effective Projected Area