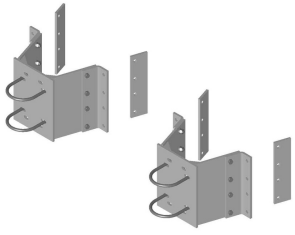


WT-MSM4-B



Mid-span Mount for 4-1/2 in OD mounting pipe, plain end pipe not included

Product Classification

Product Type Water tower mount

General Specifications

Mounting Pod Leg

Pipe, quantity 0

Sectors, quantity 1

Dimensions

Height 203.2 mm | 8 in

Width 304.8 mm | 12 in

Length 355.6 mm | 14 in

Pipe Outer Diameter 114.3 mm | 4.5 in

Stand-off Distance 203.2 mm | 8 in

Material Specifications

Material Type Hot dip galvanized steel

Packaging and Weights

Included Hardware | Mount

Packaging quantity 1

Weight, net 22.816 kg | 50.3 lb

Regulatory Compliance/Certifications

Agency	Classification
CHINA-ROHS	Below maximum concentration value
ISO 9001:2015	Designed, manufactured and/or distributed under this quality management system
REACH-SVHC	Compliant as per SVHC revision on www.commscope.com/ProductCompliance

WT-MSM4-B

ROHS Compliant

UK-ROHS Compliant

