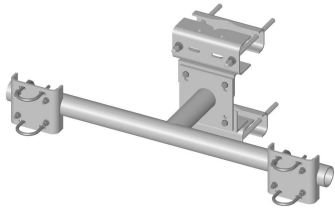


# SF-DPM3-B

---



Co-location Dual Pipe Mount Base Kit; includes (2) 2-7/8 in OD pipe mounts, pipes not included

## Product Classification

**Product Type** Co-location dual pipe mount kit

## General Specifications

**Mounting** Angle 60°, 203.2 mm (8 in) | Angle 90°, 152.4 mm (6 in) | Straight or tapered legs up to 203.2 mm (8 in) OD

**Note** Two 72 in x 8 in panel antenna per sector

**Pipe, quantity** 0

**Tower Taper** Non-tapered | Tapered

## Dimensions

**Height** 254 mm | 10 in

**Face Width** 1.463 m | 4.8 ft

**Width** 1,447.8 mm | 57 in

**Length** 0.396 m | 1.3 ft

**Face Support Pipe Diameter** 88.9 mm | 3.5 in

**Mounting Diameter, maximum** 203.2 mm | 8 in

**Mounting Diameter, minimum** 0 mm | 0 in

**Pipe Outer Diameter** 73.66 mm | 2.9 in

**Stand-off Distance** 391.16 mm | 15.4 in

## Material Specifications

**Material Type** Hot dip galvanized steel

## Mechanical Specifications

**Wind Rating** 120 mph (BWS) at 150 ft AGL | 140 mph (3-second gust) at 150 ft AGL using Exposure D per FBC

# SF-DPM3-B

---

**Wind Rating Test Method** TIA/EIA-222

## Packaging and Weights

**Included** Clamps | Frame | Pipe mounts | Saddle mounts  
**Packaging quantity** 1  
**Weight, net** 96.8 kg | 213.407 lb

## Regulatory Compliance/Certifications

Agency	Classification
ISO 9001:2015	Designed, manufactured and/or distributed under this quality management system



## \* Footnotes

**Wind Rating** BWS—Base Wind Speed; FBC—Florida Building Code