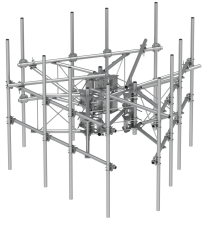


MTC3752M3



G2 Series High Capacity 3-Sector Monopole Frame, 12 ft 6 in face, includes twelve 96 in antenna pipes plus six 96 in RRU pipes; For patents, see www.cs-pat.com.

Product Classification

Product Type	High capacity monopole sector frame
Ordering Note	NSTD445 Compliant

General Specifications

Mounting	Monopole, 381–1270 mm (15–50 in) OD
Pipe, quantity	18
Sectors, quantity	3

Dimensions

Height	2,438.4 mm 96 in
Face Width	3.81 m 12.5 ft
Width	3,810 mm 150 in
Pipe Length	2,438.4 mm 96 in
Face Support Pipe Diameter	60.325 mm 2.375 in
Mounting Diameter, maximum	1270 mm 50 in
Mounting Diameter, minimum	304.8 mm 12 in
Pipe Outer Diameter	60.325 mm 2.375 in
Stand-off Distance	1,117.6 mm 44 in

Material Specifications

Material Type	Hot dip galvanized steel
----------------------	--------------------------

Mechanical Specifications

Wind Rating	For Specifications, please contact steelproducts@commscope.com or call 800-255-1479
Wind Rating Test Method	TIA/EIA-222

Packaging and Weights

MTC3752M3

Included	Pipe mounts Plain end pipes (12) RRU Pipes (6) Ring mounts (2) Sector frames (3) Stiff arm
Packaging quantity	1
Weight, net	884.052 kg 1949 lb

Regulatory Compliance/Certifications

Agency	Classification
CHINA-ROHS	Above maximum concentration value
ISO 9001:2015	Designed, manufactured and/or distributed under this quality management system
ROHS	Compliant/Exempted
UK-ROHS	Compliant/Exempted



* Footnotes

Wind Rating	BWS—Base Wind Speed; FBC—Florida Building Code
--------------------	--