

# RVV-65D-R3VB-V2



6-port sector antenna, 2x 694–960 and 4x 1695–2690 MHz, 65° HPBW, 3x RET

- All Internal RET actuators are connected in “Cascaded SRET” configuration
- Antenna with tilt scale indicators and integrated pluggable RET
- Uses the 7/16 DIN female connectors

## General Specifications

<b>Antenna Type</b>	Sector
<b>Band</b>	Multiband
<b>Color</b>	Light Gray (RAL 7035)
<b>Grounding Type</b>	RF connector inner conductor and body grounded to reflector and mounting bracket
<b>Performance Note</b>	Outdoor usage
<b>Radome Material</b>	Fiberglass, UV resistant
<b>Radiator Material</b>	Aluminum
<b>Reflector Material</b>	Aluminum
<b>RF Connector Interface</b>	7-16 DIN Female
<b>RF Connector Location</b>	Bottom
<b>RF Connector Quantity, mid band</b>	4
<b>RF Connector Quantity, low band</b>	2
<b>RF Connector Quantity, total</b>	6

## Remote Electrical Tilt (RET) Information

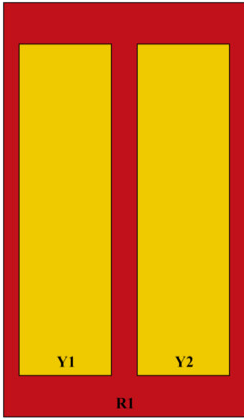
<b>RET Hardware</b>	CommRET v2
<b>RET Interface</b>	8-pin DIN Female   8-pin DIN Male
<b>RET Interface, quantity</b>	1 female   1 male
<b>Input Voltage</b>	10–30 Vdc
<b>Internal RET</b>	Low band (1)   Mid band (2)
<b>Power Consumption, active state, maximum</b>	10 W
<b>Power Consumption, idle state, maximum</b>	2 W
<b>Protocol</b>	3GPP/AISG 2.0 (Single RET)

# RVV-65D-R3VB-V2

## Dimensions

<b>Width</b>	397 mm   15.63 in
<b>Depth</b>	157 mm   6.181 in
<b>Length</b>	2547 mm   100.276 in
<b>Net Weight, antenna only</b>	28.9 kg   63.714 lb

## Array Layout



Array ID	Frequency (MHz)	RF Connector	RET (SRET)	AISG RET UID
R1	694-960	1 - 2	1	CPxxxxxxxxxxxxxxxxR1
Y1	1695-2690	3 - 4	2	CPxxxxxxxxxxxxxxxxY1
Y2	1695-2690	5 - 6	3	CPxxxxxxxxxxxxxxxxY2

(Sizes of colored boxes are not true depictions of array sizes)

## Port Configuration

# RVV-65D-R3VB-V2



## Electrical Specifications

<b>Impedance</b>	50 ohm
<b>Operating Frequency Band</b>	1695 – 2690 MHz   694 – 960 MHz
<b>Polarization</b>	±45°
<b>Total Input Power, maximum</b>	900 W

## Electrical Specifications

	R1	R1	R1	Y1,Y2	Y1,Y2	Y1,Y2	Y1,Y2
<b>Frequency Band, MHz</b>	<b>694–790</b>	<b>790–890</b>	<b>890–960</b>	<b>1695–1920</b>	<b>1920–2200</b>	<b>2300–2500</b>	<b>2500–2690</b>
<b>RF Port</b>	1,2	1,2	1,2	3-6	3-6	3-6	3-6
<b>Gain at Mid Tilt, dBi</b>	16.7	17.1	17.8	17.6	18.3	18.6	18.8
<b>Beamwidth, Horizontal, degrees</b>	66	62	59	66	64	63	62
<b>Beamwidth, Vertical, degrees</b>	8.7	7.7	7	5.5	4.9	4.3	4
<b>Beam Tilt, degrees</b>	2–12	2–12	2–12	2–12	2–12	2–12	2–12
<b>USLS (First Lobe), dB</b>	16	18	16	18	19	18	17
<b>Front-to-Back Ratio, Copolarization 180° ± 30°, dB</b>	30	31	30	28	30	30	28

# RVV-65D-R3VB-V2

<b>Isolation, Cross Polarization, dB</b>	28	28	28	28	28	28	28
<b>Isolation, Inter-band, dB</b>	28	28	28	28	28	28	28
<b>VSWR   Return loss, dB</b>	1.5 14.0	1.5 14.0	1.5 14.0	1.5 14.0	1.5 14.0	1.5 14.0	1.5 14.0
<b>PIM, 3rd Order, 2 x 20 W, dBc</b>	-153	-153	-153	-153	-153	-153	-153
<b>Input Power per Port, maximum, watts</b>	250	250	250	200	200	200	200

## Electrical Specifications, BASTA

<b>Frequency Band, MHz</b>	<b>694–790</b>	<b>790–890</b>	<b>890–960</b>	<b>1695–1920</b>	<b>1920–2200</b>	<b>2300–2500</b>	<b>2500–2690</b>
<b>Gain by all Beam Tilts, average, dBi</b>	16.4	16.9	17.7	17.3	17.9	18.4	18.4
<b>Gain by all Beam Tilts Tolerance, dB</b>	±0.7	±0.3	±0.3	±0.4	±0.5	±0.4	±0.5
<b>Beamwidth, Horizontal Tolerance, degrees</b>	±3	±1	±1	±7	±5	±2	±5
<b>Beamwidth, Vertical Tolerance, degrees</b>	±0.5	±0.4	±0.3	±0.3	±0.3	±0.2	±0.2
<b>CPR at Boresight, dB</b>	27	32	32	26	25	29	28

## Mechanical Specifications

<b>Wind Loading @ Velocity, frontal</b>	669.0 N @ 150 km/h (150.4 lbf @ 150 km/h)
<b>Wind Loading @ Velocity, lateral</b>	366.0 N @ 150 km/h (82.3 lbf @ 150 km/h)
<b>Wind Loading @ Velocity, rear</b>	1,080.0 N @ 150 km/h (242.8 lbf @ 150 km/h)
<b>Wind Speed, maximum</b>	200 km/h (124 mph)

## Packaging and Weights

<b>Width, packed</b>	525 mm   20.669 in
<b>Depth, packed</b>	300 mm   11.811 in
<b>Length, packed</b>	2880 mm   113.386 in
<b>Weight, gross</b>	41.9 kg   92.374 lb

## Regulatory Compliance/Certifications

<b>Agency</b>	<b>Classification</b>
ISO 9001:2015	Designed, manufactured and/or distributed under this quality management system



# RVV-65D-R3VB-V2

---

## Included Products

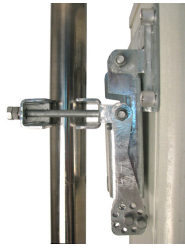
- BSAMNT-B95-03 – Wide Profile Antenna Downtilt Mounting Kit for 2.4 - 4.5 in (60 - 115 mm) OD round members. Kit contains one scissor top bracket set and one bottom bracket set.

## \* Footnotes

**Performance Note** Severe environmental conditions may degrade optimum performance

# BSAMNT-B95-03

---



Wide Profile Antenna Downtilt Mounting Kit for 2.4 - 4.5 in (60 - 115 mm) OD round members. Kit contains one scissor top bracket set and one bottom bracket set.

## Product Classification

**Product Type** Downtilt mounting kit

## General Specifications

**Application** Outdoor

**Color** Silver

## Dimensions

**Compatible Diameter, maximum** 114.3 mm | 4.5 in

**Compatible Diameter, minimum** 61 mm | 2.402 in

**Weight, net** 4.5 kg | 9.921 lb

## Material Specifications

**Material Type** Galvanized steel

## Packaging and Weights

**Included** Brackets | Hardware

**Packaging quantity** 2

## Regulatory Compliance/Certifications

### Agency

CE  
ISO 9001:2015

### Classification

Compliant with the relevant CE product directives  
Designed, manufactured and/or distributed under this quality management system

