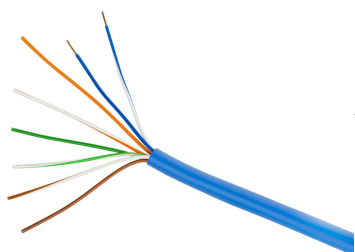


# 107078404 | 2010B BL 4/24 W1000



2010B Category 3 U/UTP Cable, plenum, blue jacket, 4 pair count, 1000 ft (305 m) length, WE TOTE® box

## OBSOLETE

This product was discontinued on: August 31, 2022

### Replaced By:

760041913      PowerSUM 2061F ETL Verified Category 5e U/UTP Cable, plenum, blue jacket, 4 pair count, 1000 ft  
2061F BL 4/24 W1000      (305 m) length, WE TOTE® box

## Product Classification

<b>Regional Availability</b>	Asia   Australia/New Zealand   EMEA   Latin America   North America
<b>Portfolio</b>	CommScope®
<b>Product Type</b>	Twisted pair cable

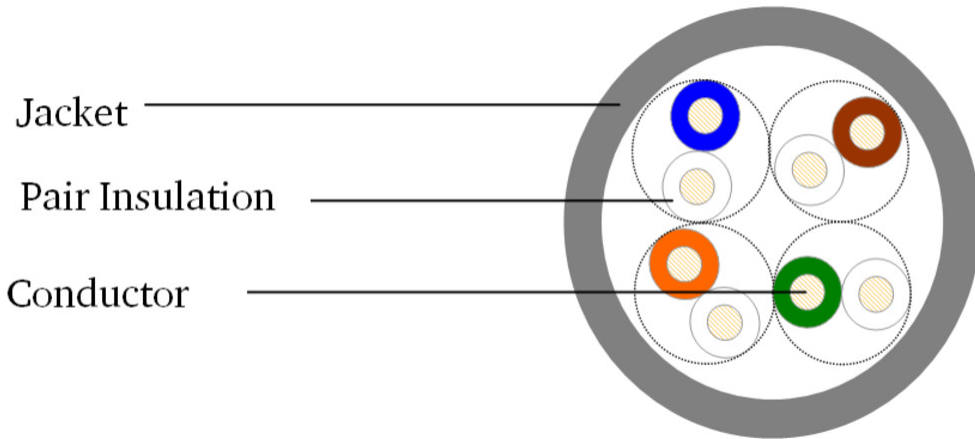
## General Specifications

<b>Product Number</b>	2010B
<b>ANSI/TIA Category</b>	3
<b>Cable Component Type</b>	Horizontal
<b>Cable Type</b>	U/UTP (unshielded)
<b>Conductor Type, singles</b>	Solid
<b>Conductors, quantity</b>	8
<b>Jacket Color</b>	Blue
<b>Pairs, quantity</b>	4
<b>Transmission Standards</b>	ANSI/TIA-568.2-D

## Dimensions

<b>Cable Length</b>	304.8 m   1000 ft
<b>Diameter Over Jacket, nominal</b>	4.597 mm   0.181 in
<b>Jacket Thickness</b>	0.457 mm   0.018 in
<b>Conductor Gauge, singles</b>	24 AWG

## Cross Section Drawing



## Electrical Specifications

<b>Characteristic Impedance</b>	100 ohm
<b>Characteristic Impedance Tolerance</b>	±15 ohm
<b>dc Resistance Unbalance, maximum</b>	5 %
<b>dc Resistance, maximum</b>	9.38 ohms/100 m   2.859 ohms/100 ft
<b>Dielectric Strength, minimum</b>	1500 Vac   2500 Vdc
<b>Mutual Capacitance at Frequency</b>	6.6 nF/100 m @ 1 kHz
<b>Operating Frequency, maximum</b>	16 MHz
<b>Operating Voltage, maximum</b>	80 V
<b>Safety Voltage Rating</b>	300 V

## Material Specifications

<b>Conductor Material</b>	Bare copper
<b>Insulation Material</b>	PVC
<b>Jacket Material</b>	PVC

## Mechanical Specifications

<b>Pulling Tension, maximum</b>	11.34 kg   25 lb
---------------------------------	------------------

## Environmental Specifications

<b>Installation temperature</b>	0 °C to +60 °C (+32 °F to +140 °F)
---------------------------------	------------------------------------

<b>Operating Temperature</b>	-20 °C to +60 °C (-4 °F to +140 °F)
<b>Environmental Space</b>	Plenum
<b>Flame Test Method</b>	CMP/FT6
<b>Smoke Test Method</b>	CMP/FT6

## Packaging and Weights

<b>Cable weight</b>	28.275 kg/km   19 lb/kft
<b>Packaging Type</b>	WE TOTE® box

## Regulatory Compliance/Certifications

<b>Agency</b>	<b>Classification</b>
CHINA-ROHS	Below maximum concentration value
ISO 9001:2015	Designed, manufactured and/or distributed under this quality management system
REACH-SVHC	Compliant as per SVHC revision on <a href="http://www.commscope.com/ProductCompliance">www.commscope.com/ProductCompliance</a>
ROHS	Compliant

