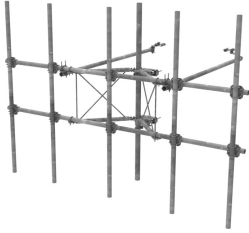


# SFG23RHDX-14-5-120



G23RHDX Tower Sector Frame with spine extension for RRU Mounting, 14.5 ft x 2.88 in OD face pipes, includes five 2.88 OD x 120 in antenna pipes

- Extended spine for SFG23 RHDX mounts that decrease PIM from radio relocation
- Increased versatility and stability
- Updated frame provides higher loading
- More RRU mounting available, reducing need for additional mounts
- Better load management
- Less structure stress
- Can be used in combination with APEX RRU mounts

## Product Classification

<b>Product Type</b>	High capacity Tower sector frame
<b>Product Series</b>	G2
<b>Ordering Note</b>	NSTD445 Compliant

## General Specifications

<b>Application</b>	4G LTE antenna/radio mount
<b>Mounting</b>	Angle 60°, 203.2 mm (8 in)   Straight or tapered legs up to 203.2 mm (8 in) OD
<b>Patent Number</b>	Patent pending
<b>Pipe, quantity</b>	5
<b>Sectors, quantity</b>	1
<b>Tower Taper</b>	Non-tapered   Tapered

## Dimensions

<b>Height</b>	3,048 mm   120 in
<b>Face Width</b>	4.42 m   14.5 ft
<b>Width</b>	4,419.6 mm   174 in
<b>Pipe Length</b>	3,048 mm   120 in
<b>Face Support Pipe Diameter</b>	73.025 mm   2.875 in
<b>Mounting Diameter, maximum</b>	218.44 mm   8.6 in
<b>Mounting Diameter, minimum</b>	38.1 mm   1.5 in
<b>Pipe Outer Diameter</b>	73.025 mm   2.875 in
<b>Stand-off Distance</b>	1,066.8 mm   42 in

## Material Specifications

<b>Material Type</b>	Hot dip galvanized steel
----------------------	--------------------------

# SFG23RHDX-14-5-120

---

## Mechanical Specifications

### Wind Rating

For Specifications, please contact [steelproducts@commscope.com](mailto:steelproducts@commscope.com) or call 800-255-1479

## Packaging and Weights

### Included

Antenna mounting pipes | Crossover plates | Frame | Stiff arms (2) | Tower attachment

### Packaging quantity

1

## Regulatory Compliance/Certifications

### Agency

### Classification

CHINA-ROHS

Below maximum concentration value

REACH-SVHC

Compliant as per SVHC revision on [www.commscope.com/ProductCompliance](http://www.commscope.com/ProductCompliance)

ROHS

Compliant

UK-ROHS

Compliant



## \* Footnotes

### Wind Rating

BWS—Base Wind Speed; FBC—Florida Building Code