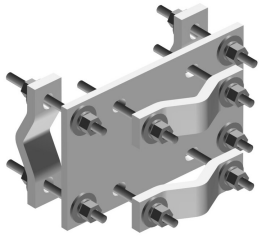


# CO-100

---



Crossover Plate, joins 1-1/2 in to 3-1/2 in OD round members

## Product Classification

**Product Type** Clamp plate

## General Specifications

**Mounting** Crossover plate

**Tower Taper** Non-tapered

## Dimensions

**Height** 8 in | 203.2 mm

**Width** 6 in | 152.4 mm

**Length** 10 in | 254 mm

**Mounting Diameter, maximum** 3.5 in | 88.9 mm

**Mounting Diameter, minimum** 1.5 in | 38.1 mm

## Material Specifications

**Material Type** Hot dip galvanized steel

## Packaging and Weights

**Included** Clamps | Plates

**Packaging quantity** 1

**Weight, net** 7.3 kg | 16.094 lb

## Regulatory Compliance/Certifications

### Agency

ISO 9001:2015

### Classification

Designed, manufactured and/or distributed under this quality management system

