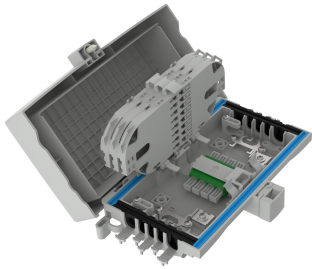


SEC4-A3C5D1BA000



NOVUX™ SEC Closure, splice/patch, 4x SC/APC adapter, 8x SC/APC Grade B 900µm pigtail, no splitters, mounting included, gray

- Design optimized for FTTH façade applications with gray and black colors
- Agnostic to connectivity technologies: splice, connector, field-installable connector for agility and flexibility
- Innovative removable hinge design allows cover to open from the left, right, or top
- Identification plate for either QR code or customer logo
- QR code and CommScope cTrak® app for one-click access to all product information

Product Classification

Regional Availability	EMEA
Regional Availability Note	Contact your local CommScope representative for specific availability
Product Type	In-line, rectangular fiber closure
Product Brand	NOVUX™
Product Series	SEC100

General Specifications

Cable Capacity, Branch	2 Round 1.8–7.0 mm (0.07–0.27 in)
Cable Capacity, Drop	6 Round 1.8–7.0 mm (0.07–0.27 in)
Cable Capacity, Feeder	2 Round 9.0–12.0 mm (0.35–0.47 in)
Cable Ports Quantity, total	10 round ports
Cable Sealing Type	Gasket/grommet configuration
Closure Sealing Type	Hinged with lock
Closure Style	In-line
Color	Gray
Mounting	Facade Wall
Network Area Type	Drop
Port Type	SC/APC
Port, quantity	4
Splice Tray Included, quantity	3
Splice Tray Type Included	12-way, heat shrink
Splices per Tray, quantity	12

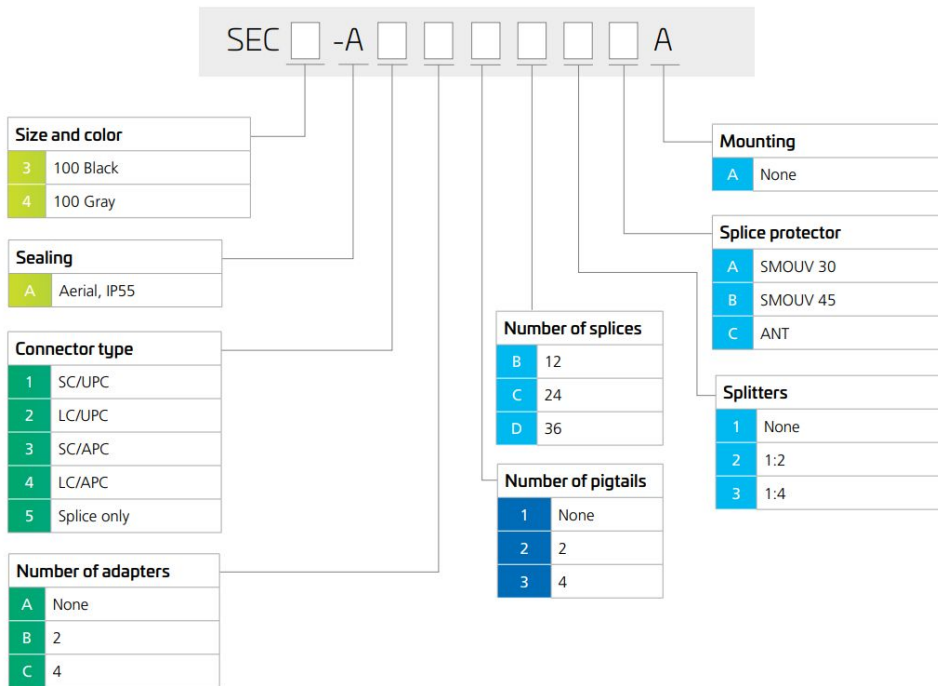
SEC4-A3C5D1BA000

Splicing Capacity, maximum	36
Splicing Capacity, Single Fusion, maximum	36
Splicing Type, Supported	Single fusion
Splitter Type	No splitter
Splitter, quantity	0

Dimensions

Height	117 mm 4.606 in
Width	210 mm 8.268 in
Depth	75 mm 2.953 in

Ordering Tree



Optical Specifications

Fiber Type	G.657.A1 G.657.A2 G.657.B3
-------------------	--------------------------------

Environmental Specifications

Environmental Space	Facade Outdoor
Qualification Standards	IP55

SEC4-A3C5D1BA000

UV Resistance UV stabilized

Packaging and Weights

Included 8x SC/APC Grade B 900µm pigtail

Packaging quantity 1

Packaging Type Box | Carton

Regulatory Compliance/Certifications

Agency

CHINA-ROHS

ISO 9001:2015

ROHS

UK-ROHS

Classification

Above maximum concentration value

Designed, manufactured and/or distributed under this quality management system

Compliant/Exempted

Compliant/Exempted

