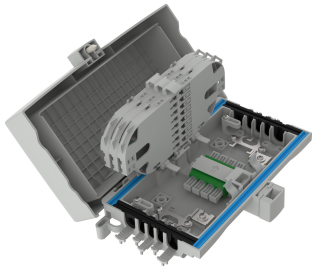


SEC4-A3C1D3BA000



NOVUX™ SEC Closure, splice/patch, 4x SC/APC adapter, 1x factory-installed 1:4 SC/APC Grade B pre-connectorized splitter, mounting included, gray

- Design optimized for FTTH façade applications with gray and black colors
- Agnostic to connectivity technologies: splice, connector, field-installable connector for agility and flexibility
- Innovative removable hinge design allows cover to open from the left, right, or top
- Identification plate for either QR code or customer logo
- QR code and CommScope cTrak® app for one-click access to all product information

Product Classification

| | |
|-----------------------------------|---|
| Regional Availability | EMEA |
| Regional Availability Note | Contact your local CommScope representative for specific availability |
| Product Type | In-line, rectangular fiber closure |
| Product Brand | NOVUX™ |
| Product Series | SEC100 |

General Specifications

| | |
|---------------------------------------|------------------------------------|
| Cable Capacity, Branch | 2 Round 1.8–7.0 mm (0.07–0.27 in) |
| Cable Capacity, Drop | 6 Round 1.8–7.0 mm (0.07–0.27 in) |
| Cable Capacity, Feeder | 2 Round 9.0–12.0 mm (0.35–0.47 in) |
| Cable Ports Quantity, total | 10 round ports |
| Cable Sealing Type | Gasket/grommet configuration |
| Closure Sealing Type | Hinged with lock |
| Closure Style | In-line |
| Color | Gray |
| Mounting | Facade Wall |
| Network Area Type | Drop |
| Port Type | SC/APC |
| Port, quantity | 4 |
| Splice Tray Included, quantity | 3 |
| Splice Tray Type Included | 12-way, heat shrink |
| Splices per Tray, quantity | 12 |

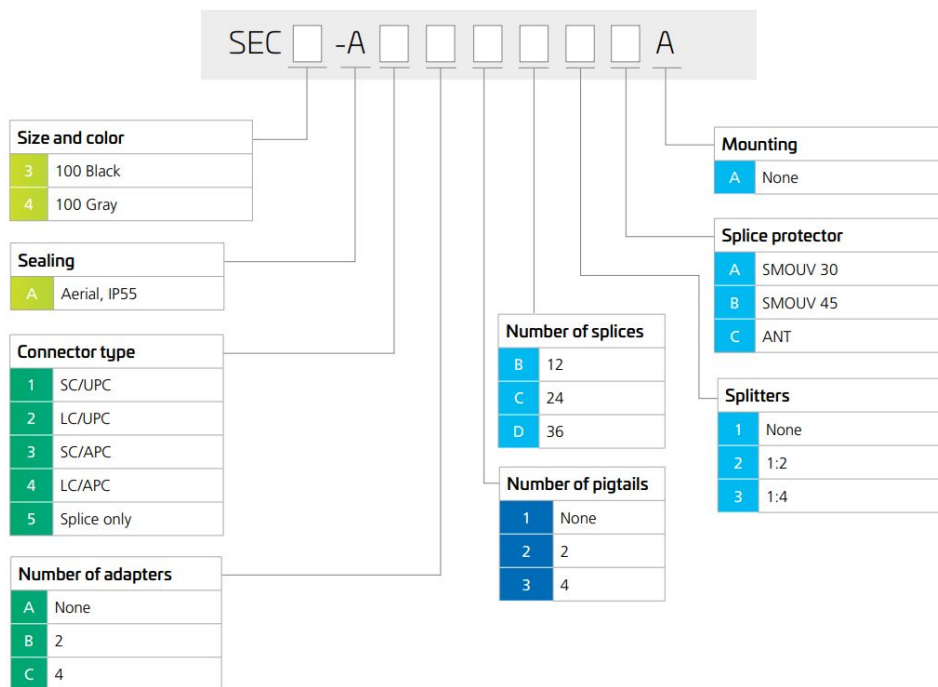
SEC4-A3C1D3BA000

| | |
|--|---------------|
| Splicing Capacity, maximum | 28 |
| Splicing Capacity, Single Fusion, maximum | 28 |
| Splicing Type, Supported | Single fusion |
| Splitter Type | 1 x 4 |
| Splitter, quantity | 1 |

Dimensions

| | |
|---------------|-------------------|
| Height | 117 mm 4.606 in |
| Width | 210 mm 8.268 in |
| Depth | 75 mm 2.953 in |

Ordering Tree



Optical Specifications

| | |
|-------------------|--------------------------------|
| Fiber Type | G.657.A1 G.657.A2 G.657.B3 |
|-------------------|--------------------------------|

Environmental Specifications

| | |
|----------------------------|------------------|
| Environmental Space | Facade Outdoor |
|----------------------------|------------------|

SEC4-A3C1D3BA000

| | |
|--------------------------------|--|
| Qualification Standards | IP55 |
| UV Resistance | UV stabilized |
| Packaging and Weights | |
| Included | 1x factory-installed 1:4 SC/APC Grade B pre-connectorized splitter |
| Packaging quantity | 1 |
| Packaging Type | Box Carton |

Regulatory Compliance/Certifications

| Agency | Classification |
|---------------|--|
| CHINA-ROHS | Above maximum concentration value |
| ISO 9001:2015 | Designed, manufactured and/or distributed under this quality management system |
| ROHS | Compliant/Exempted |
| UK-ROHS | Compliant/Exempted |

