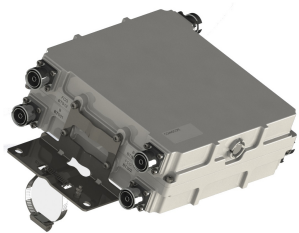


# TD-PCS-5-B-F\_G | E15Z50P17



PCS Twin In-Band Diplexer Tuning version 3, PCS B/FCG Bands with AISG/DC Sense

- Automatic dc switching with dc sense

## OBSOLETE

### Replaced By:

CHB626-43-2X  
D15T01P38

Twin Hybrid Combiner

## Product Classification

**Product Type** Diplexer

## General Specifications

**Application** Indoor | Outdoor

**Antenna Interface** 7-16 DIN Female

**Connector Interface Style** Long neck

**Rx Interface** 7-16 DIN Female

## Dimensions

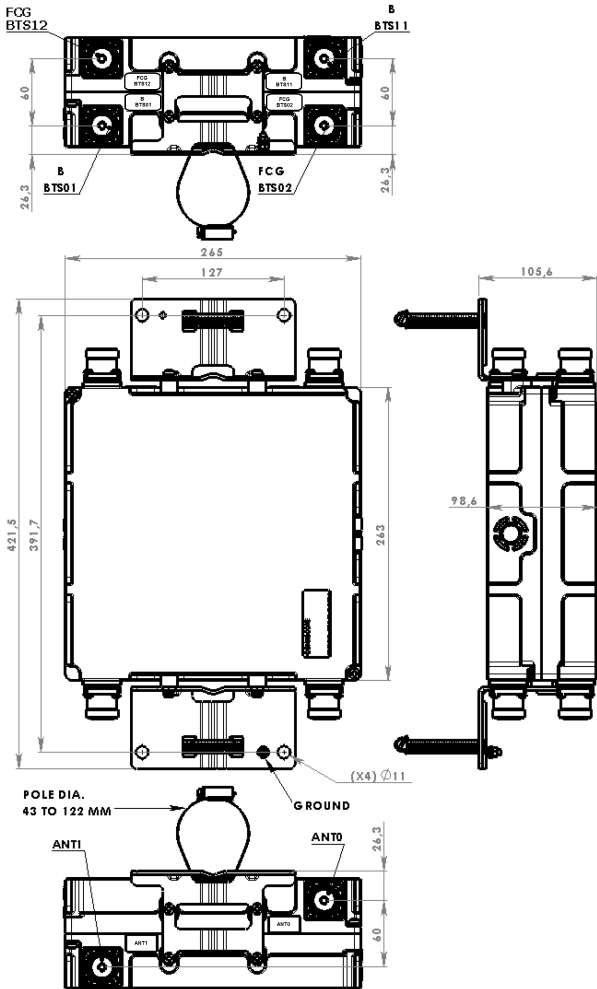
**Height** 263 mm | 10.354 in

**Width** 265 mm | 10.433 in

**Depth** 95.6 mm | 3.764 in

**Ground Screw Diameter** 5 mm | 0.197 in

## Outline Drawing



### Electrical Specifications, Rx (Uplink)

<b>Frequency Band</b>	1870 – 1885 MHz
<b>Insertion Loss, maximum</b>	0.8 dB
<b>Insertion Loss, typical</b>	0.5 dB
<b>Return Loss, minimum</b>	18 dB
<b>Isolation, minimum</b>	30 dB
<b>Total Group Delay, maximum</b>	60 ns

### Electrical Specifications 2, Rx (Uplink)

<b>Frequency Band</b>	1890 – 1915 MHz
-----------------------	-----------------

# TD-PCS-5-B-F\_G | E15Z50P17

---

<b>Isolation, minimum</b>	30 dB
<b>Total Group Delay, maximum</b>	60 ns
<b>Insertion Loss, maximum</b>	0.8 dB
<b>Insertion Loss, typical</b>	0.5 dB
<b>Return Loss, minimum</b>	18 dB

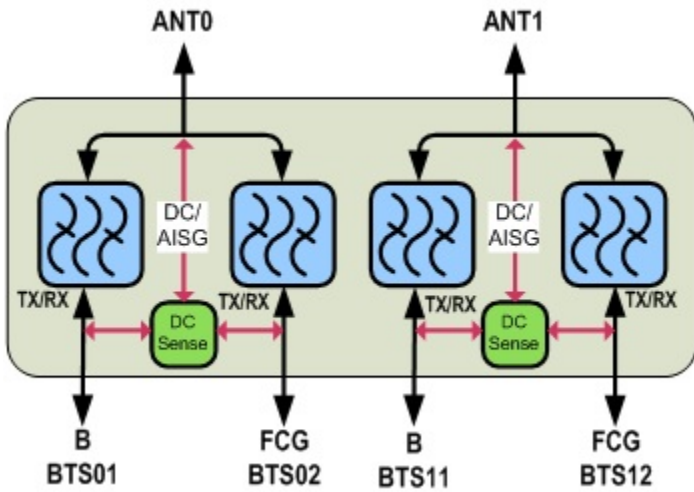
## Electrical Specifications, Tx (Downlink)

<b>Frequency Band</b>	1950 – 1965 MHz
<b>Isolation, minimum</b>	30 dB
<b>Input Power, PEP, maximum</b>	2000 W
<b>Input Power, RMS, maximum</b>	100 W
<b>Total Group Delay, maximum</b>	60 ns
<b>Insertion Loss Ripple, maximum</b>	0.8 dB
<b>Insertion Loss, typical</b>	0.5 dB
<b>Return Loss, minimum</b>	18 dB

## Electrical Specifications 2, Tx (Downlink)

<b>Frequency Band</b>	1970 – 1995 MHz
<b>Input Power, PEP, maximum</b>	2000 W
<b>Insertion Loss, maximum</b>	0.8 dB
<b>Insertion Loss, typical</b>	0.5 dB
<b>Isolation, minimum</b>	30 dB
<b>Return Loss, minimum</b>	18 dB
<b>Total Group Delay, maximum</b>	60 ns

## Block Diagram



## Environmental Specifications

<b>Operating Temperature</b>	-40 °C to +60 °C (-40 °F to +140 °F)
<b>Ingress Protection Test Method</b>	IEC 60529:2001, IP67

## Packaging and Weights

<b>Included</b>	Brackets
<b>Weight, without mounting hardware</b>	8.9 kg   19.621 lb