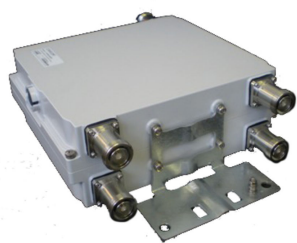


TD-AWS-5-AB-DEF1



AWS Twin In-Band Diplexer Tuning version 6, AWS AB/DEF1 Bands with AISG/DC Sense

OBSOLETE

Replaced By:

CHB626-43-2X
D15T01P38

Twin Hybrid Combiner

Product Classification

Product Type Diplexer

General Specifications

Application Indoor | Outdoor

Connector Interface 7-16 DIN Female

Connector Interface Style Long neck

Rx Interface 7-16 DIN Female

Dimensions

Height 231 mm | 9.094 in

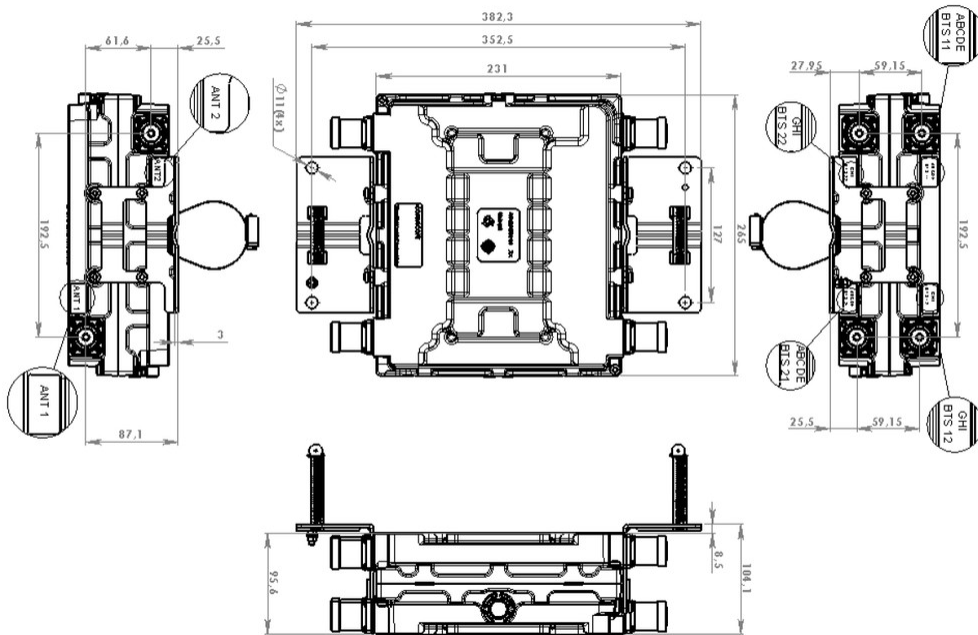
Width 265 mm | 10.433 in

Depth 96 mm | 3.78 in

Ground Screw Diameter 5 mm | 0.197 in

TD-AWS-5-AB-DEF1

Outline Drawing



Electrical Specifications, Rx (Uplink)

Frequency Band	1710 – 1729.75 MHz
Insertion Loss, typical	0.8 dB
Return Loss, minimum	18 dB
Isolation, minimum	28 dB

Electrical Specifications 2, Rx (Uplink)

Frequency Band	1735.25 – 1749.75 MHz
Isolation, minimum	28 dB
Insertion Loss, typical	0.8 dB
Return Loss, minimum	18 dB

Electrical Specifications, Tx (Downlink)

Frequency Band	2110 – 2129.75 MHz
Isolation, minimum	28 dB
Input Power, PEP, maximum	5000 W
Total Group Delay, maximum	60 ns

TD-AWS-5-AB-DEF1

Insertion Loss, typical 0.8 dB

Return Loss, minimum 18 dB

Electrical Specifications 2, Tx (Downlink)

Frequency Band 2135.25 – 2149.75 MHz

Input Power, PEP, maximum 5000 W

Insertion Loss, typical 0.8 dB

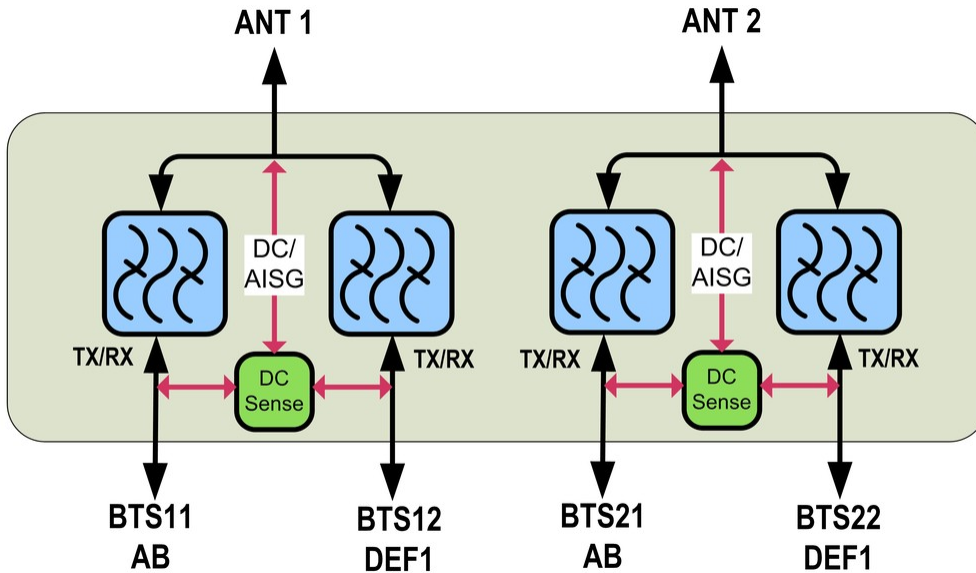
Isolation, minimum 28 dB

Return Loss, minimum 18 dB

Total Group Delay, maximum 60 ns

TD-AWS-5-AB-DEF1

Block Diagram



Environmental Specifications

Operating Temperature	-40 °C to +60 °C (-40 °F to +140 °F)
Ingress Protection Test Method	IEC 60529:2001, IP67

Packaging and Weights

Included	Brackets
Weight, without mounting hardware	8.3 kg 18.298 lb