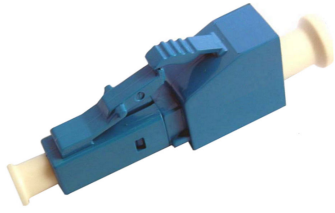


# FOA-INLC03



Fiber Optic Power Reducing Build Out Attenuator, singlemode LC/UPC, 3dB, blue

- Designed to reduce or balance the power in passive optical networks
- Insertable between the connector and the adapter and therefore suited for distribution frames, cabinets and boxes
- High system flexibility because of wave-length independency and polarization insensitivity

## Product Classification

**Regional Availability** Latin America | North America

**Product Type** Fiber attenuator

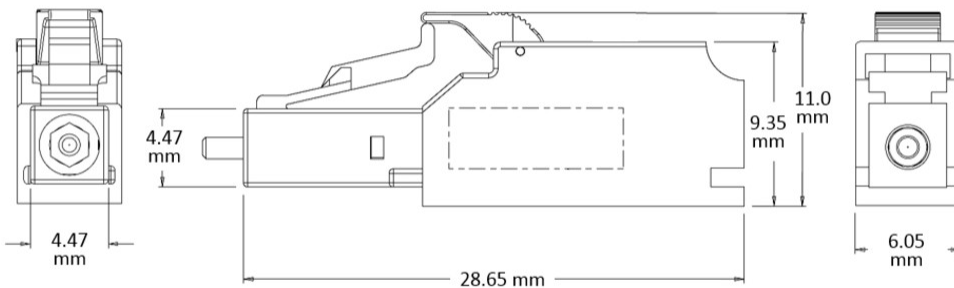
**Product Series** FOA

## General Specifications

**Color** Blue

**Interface** LC/UPC

## Outline Drawing



## Optical Specifications

# FOA-INLC03

---

|                                    |                |
|------------------------------------|----------------|
| <b>Fiber Mode</b>                  | Singlemode     |
| <b>Fiber Type</b>                  | G.652.D        |
| <b>Attenuation, nominal</b>        | 3 dB           |
| <b>Operating Wavelength</b>        | 1430 – 1625 nm |
| <b>Optical Components Standard</b> | GR-910         |
| <b>Optical Power, maximum</b>      | 250 mW         |
| <b>Return Loss, minimum</b>        | 40 dB          |

## Environmental Specifications

|                              |                                      |
|------------------------------|--------------------------------------|
| <b>Operating Temperature</b> | -40 °C to +75 °C (-40 °F to +167 °F) |
| <b>Storage Temperature</b>   | -40 °C to +80 °C (-40 °F to +176 °F) |

## Regulatory Compliance/Certifications

| <b>Agency</b> | <b>Classification</b>             |
|---------------|-----------------------------------|
| CHINA-ROHS    | Above maximum concentration value |
| ROHS          | Compliant/Exempted                |
| UK-ROHS       | Compliant/Exempted                |

