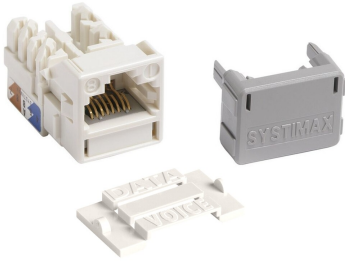


# 760041988 | MGS400-WH-100



## GigaSPEED XL® M-Series Modular Jack, RJ45, Cat6 Unshielded, White (100 ea/pkg)

- Electrical performance guaranteed to meet or exceed the channel specifications to ISO/IEC 11801 Class E and ANSI/TIA-568.2-D Category 6
- Patented crossing of straddling pair contacts enables efficient alien crosstalk reduction in the channel
- Snaps into standard M-series faceplates, surface-mount boxes, consolidation point boxes and modular panels
- Mountable either at 90 degrees (straight) or 45 degrees (angled) in M-series faceplate
- Universal design and label supports both T568 A & B wiring
- IDC connector terminations on rear of base allow quick and easy installation of 22 to 24 AWG cable
- Can support network line speeds in excess of 1 Gb/s
- Low-profile rear protective strain relief cap, protects against contamination and secures the connection

## Product Classification

### Regional Availability

Asia | Australia/New Zealand | EMEA | Latin America | North America

### Portfolio

SYSTEMAX®

### Product Type

Modular jack

### Product Brand

GigaSPEED XL®

### Product Series

MGS400

## General Specifications

### ANSI/TIA Category

6

### Cable Type

Unshielded

### Color

White

### Conductor Type

Solid | Stranded

### Integrated Dust Cover Type

None

### Mounting Note

Color matches with M-series White Faceplates and Surface Mount Boxes

### Termination Type

IDC

### Wiring

T568A | T568B

## Dimensions

# 760041988 | MGS400-WH-100

---

<b>Height</b>	19.4 mm   0.764 in
<b>Width</b>	21.08 mm   0.83 in
<b>Depth</b>	30.2 mm   1.189 in
<b>Compatible Conductor Gauge, solid</b>	22 AWG   24 AWG
<b>Compatible Conductor Gauge, stranded</b>	22 AWG   24 AWG

## Electrical Specifications

<b>Contact Resistance Variation, maximum</b>	20 mOhm
<b>Contact Resistance, maximum</b>	100 mOhm
<b>Current Rating at Temperature</b>	1.5 A @ 20 °C   1.5 A @ 68 °F
<b>Dielectric Withstand Voltage, RMS, conductive surface</b>	1,500 Vac @ 60 Hz
<b>Dielectric Withstand Voltage, RMS, contact-to-contact</b>	1,000 Vac @ 60 Hz
<b>Insulation Resistance, minimum</b>	500 MOhm
<b>Remote Powering</b>	Fully supports the safe delivery of power over LAN cabling described by IEEE 802.3bt (Type 4) and complies with the unmating under electrical load requirements prescribed by IEC 60512-99-002
<b>PoE Durability</b>	Supports IEEE 802.3bt Type 4 (90 W) applications after 3000 plug to jack mating cycles

## Material Specifications

<b>Contact Plating Material</b>	Precious metals
<b>Material Type</b>	Copper alloy   High-impact, flame retardant, thermoplastic
<b>Termination Contact Plating</b>	Nickel

## Mechanical Specifications

<b>Plug Retention Force, minimum</b>	133 N   29.9 lbf
<b>Plug to Jack Mating Cycles</b>	Complies to IEC 60603-7 series

## Environmental Specifications

<b>Operating Temperature</b>	-10 °C to +60 °C (+14 °F to +140 °F)
<b>Storage Temperature</b>	-40 °C to +70 °C (-40 °F to +158 °F)
<b>Relative Humidity</b>	Up to 95%, non-condensing
<b>Flammability Rating</b>	UL 94 V-0
<b>Safety Standard</b>	UL   cUL

## Packaging and Weights

<b>Packaging Material</b>	Standard
<b>Packaging quantity</b>	100
<b>Packaging Type</b>	Bag

## Regulatory Compliance/Certifications

<b>Agency</b>	<b>Classification</b>
CHINA-ROHS	Below maximum concentration value
ISO 9001:2015	Designed, manufactured and/or distributed under this quality management system
REACH-SVHC	Compliant as per SVHC revision on <a href="http://www.commscope.com/ProductCompliance">www.commscope.com/ProductCompliance</a>
ROHS	Compliant
UK-ROHS	Compliant

