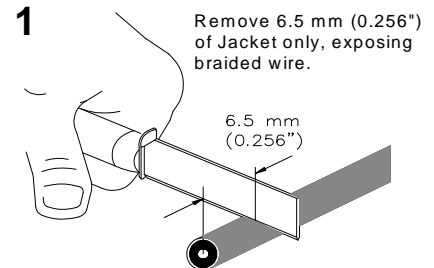
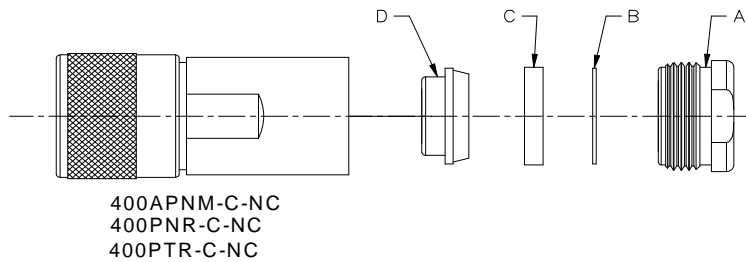
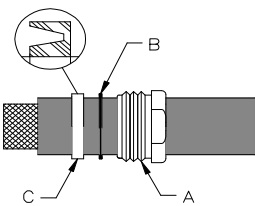


# Installation Instructions Connector Attachment

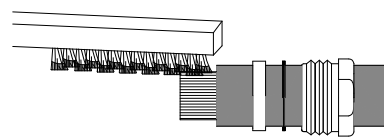
For Braided Cable CNT-400 & 8D-FB  
Captivated Pin, Clamp-type Body, IP68



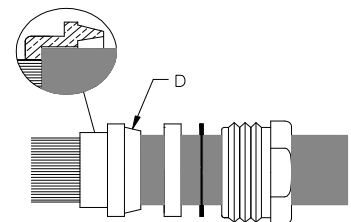
**2** Slide the A, B, C onto the cable.  
Note: the direction of part C as shown.



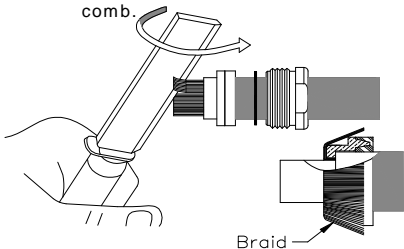
**3** Comb the braided wires to straight.



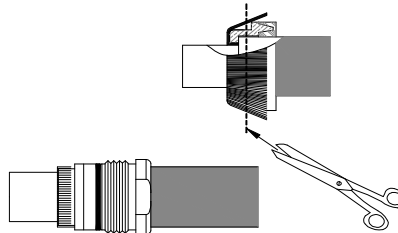
**4** Install part D as shown without damaging the braid.



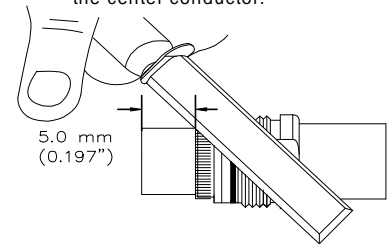
**5** Fold braid around part D and comb braid as shown, the braid should be straight and equally spaced after comb.



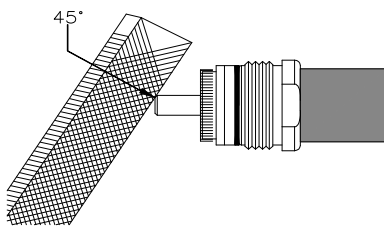
**6** Cut off the redundant braid as shown.



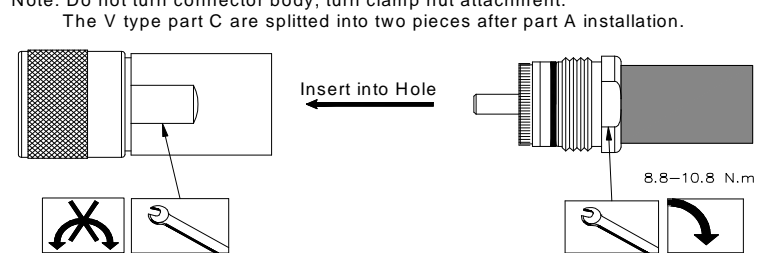
**7** Remove 5.0 mm (0.197") of foam. Remove all foam/glue residue from the center conductor.



**8** Chamfer the center conductor at a 45° angle.



**9** The cable center conductor must be straight and aligned with the connector inner contact. Insert the cable into the connector body until stopped; the center conductor must be inserted into the connector inner contact fingers. Tighten the connection to the torque value of 8.8-10.8 N.m.



部件名称 (Part Name)	表一有毒有害物质或元素名称及含量标识格式					
	有毒有害物质或元素					
	铅 (Pb)	汞 (Hg)	镉 (Cd)	六价铬 (Cr6+)	多溴联苯 (PBB)	多溴二苯醚 (PBDE)
连接器 (Connector)	X	O	O	O	O	O

O: 表示有毒有害物质在该部件所有的均质材料中的含量均在SJ/T 11363-2006规定的限量要求以下。  
X: 表示该有毒有害物质至少在该部件的某一均质材料中的含量超出SJ/T 11363-2006规定的限量要求。

Installation Training Available at Andrew Institute

Notice: Andrew disclaims any liability or responsibility for the results of improper or unsafe installation, in spection, maintenance, or removal practices



**Andrew Corporation**  
3 Westbrook Corporate Center, Suite 900, Westchester, Illinois U.S.A. 60154  
+1 (708) 349-3300 Fax (U.S.A.): 1-800-349-5444  
www.andrew.com  
Copyright © 2009 by Andrew Corporation

**Customer Service, 24 hours**  
U.S.A., Canada, Mexico: 1-800-255-1479  
U.K.: 0800 250055  
Other Europe: +44 592 782 612

