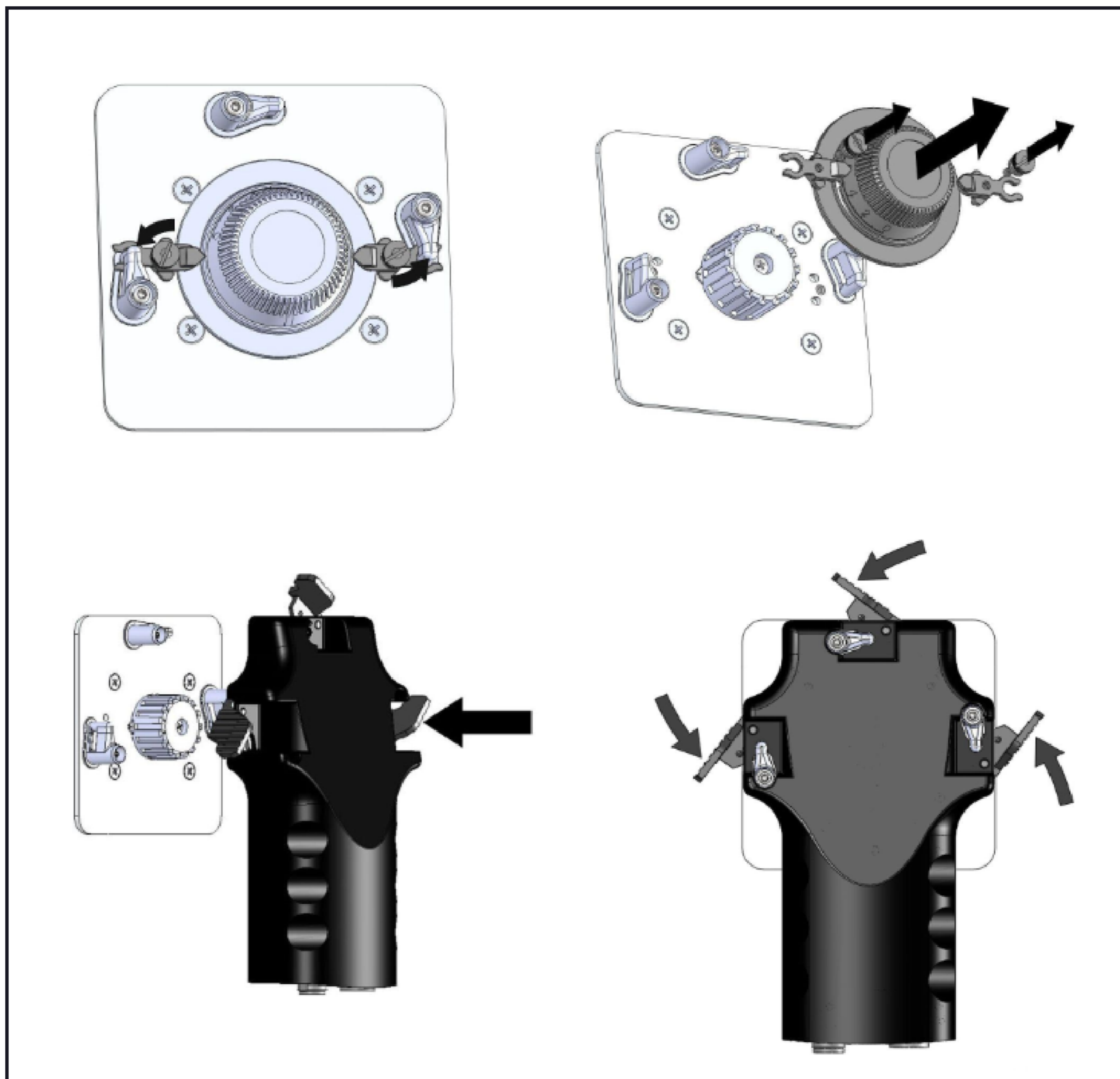


639824 Revision E, May 2016

AccuRET™ Installation Pictorial



Installation steps of AccuRET™

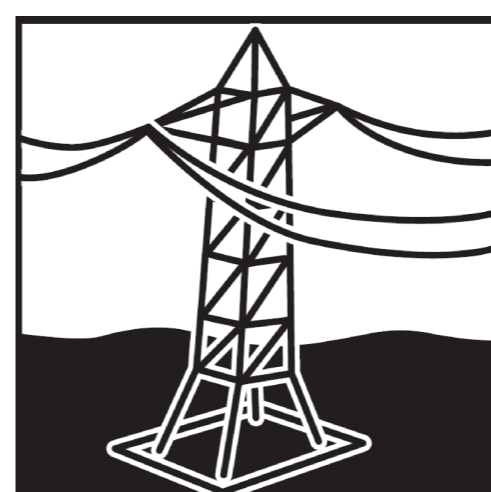
(continued on page 2)

SAFETY NOTICE

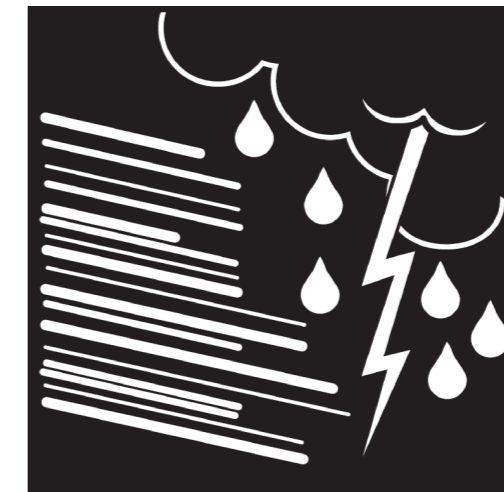
The installation, maintenance, or removal of an antenna requires qualified, experienced personnel. CommScope installation instructions are written for such installation personnel. Antenna systems should be inspected once a year by qualified personnel to verify proper installation, maintenance, and condition of equipment.

CommScope disclaims any liability or responsibility for the results of improper or unsafe installation practices.

It is recommended that transmit power be turned off when the field installation is performed. Follow all applicable safety precautions as shown on this page.



Do not install near power lines. Power lines, telephone lines, and guy wires look the same. Assume any wire or line can electrocute you.

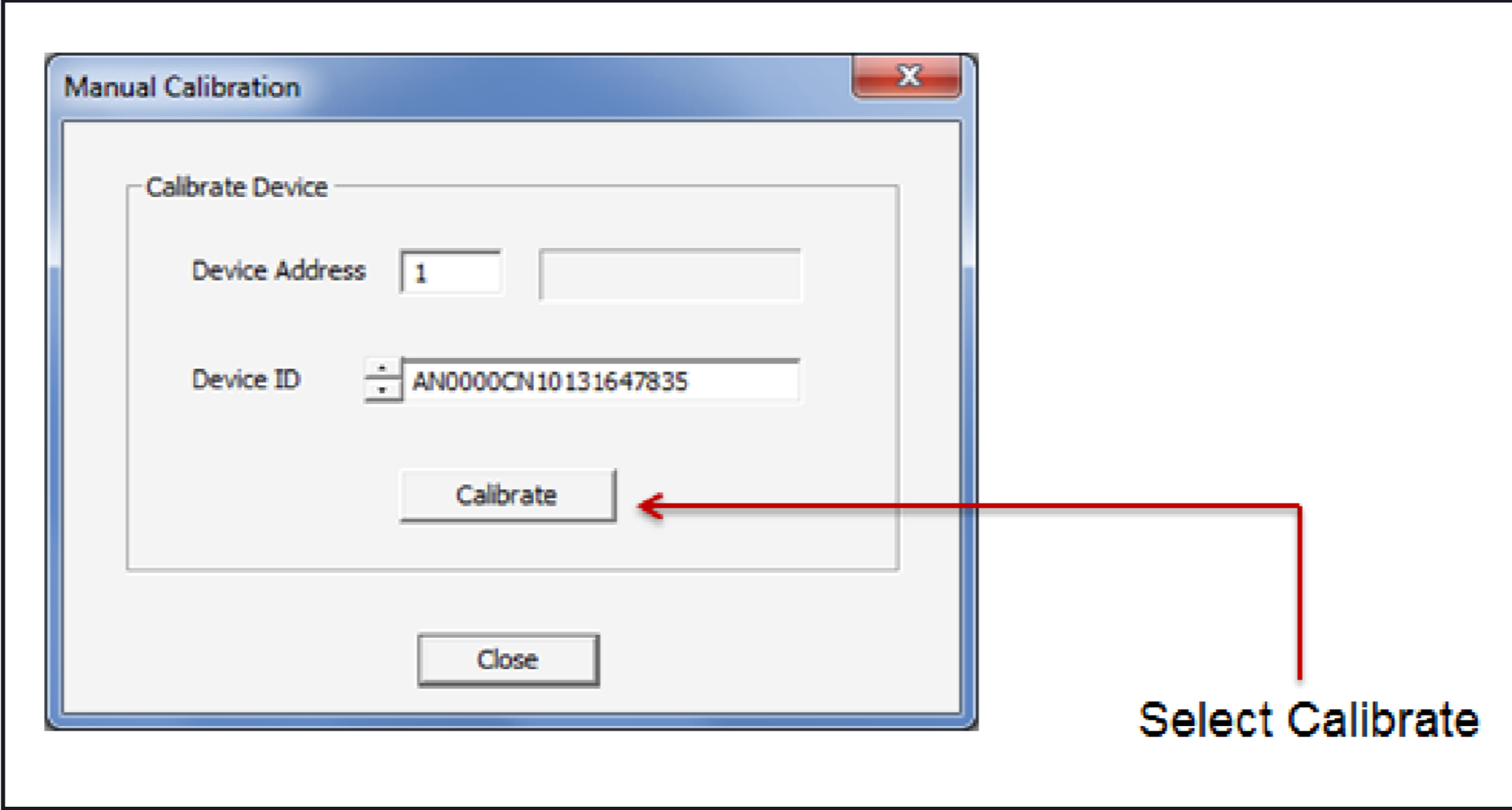
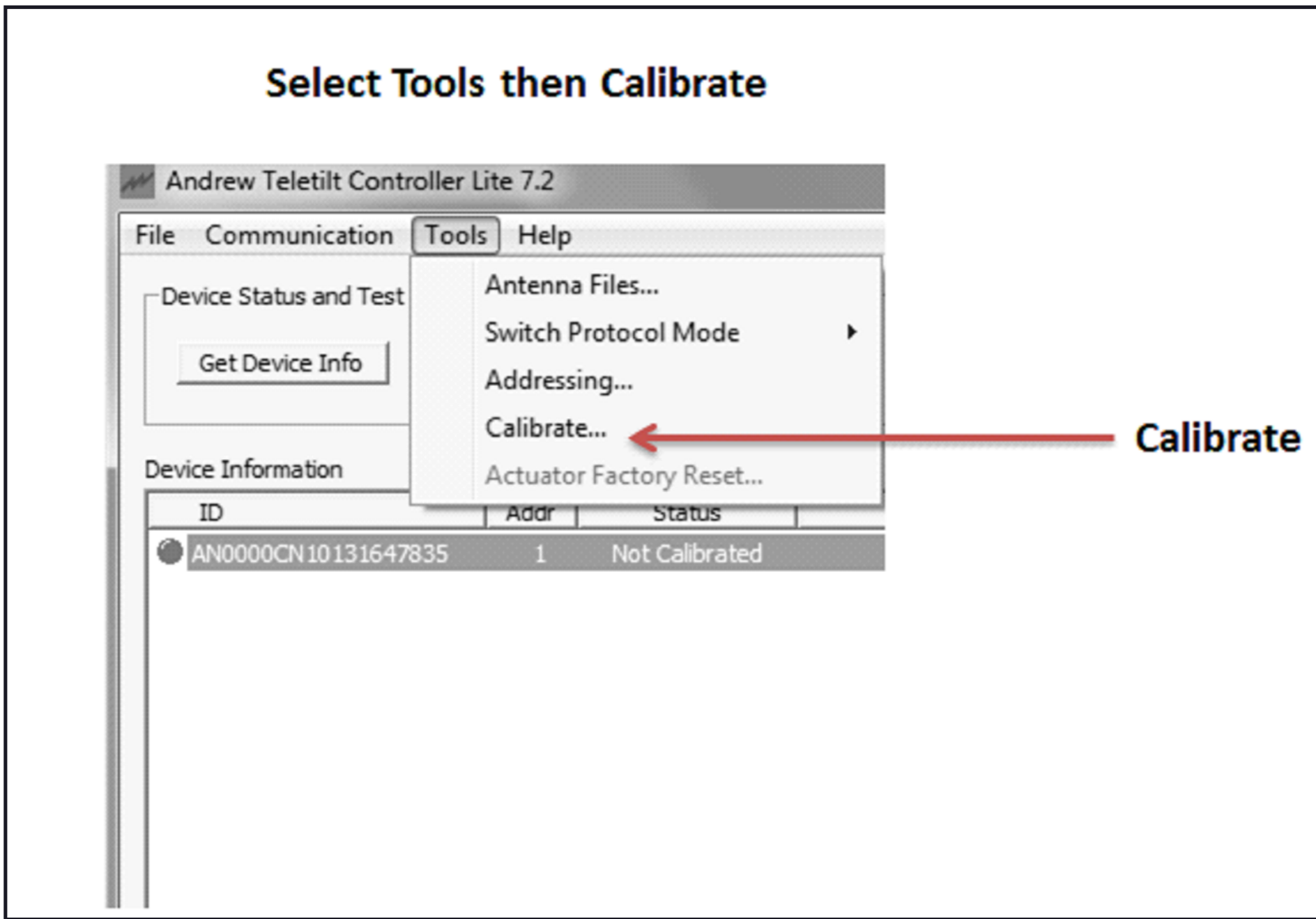
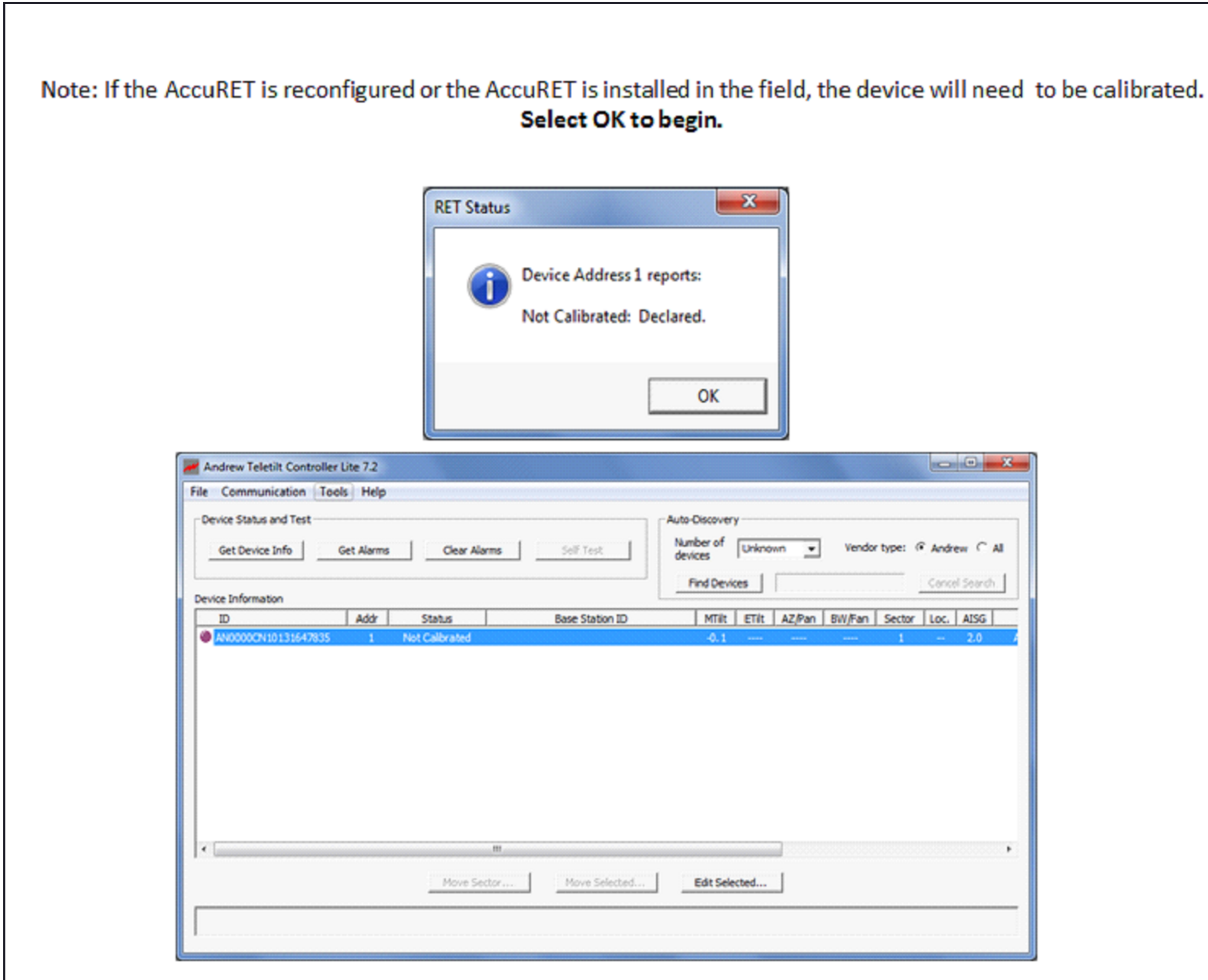


Do not install on a wet or windy day or when lightning or thunder is in the area. Do not use metal ladder.



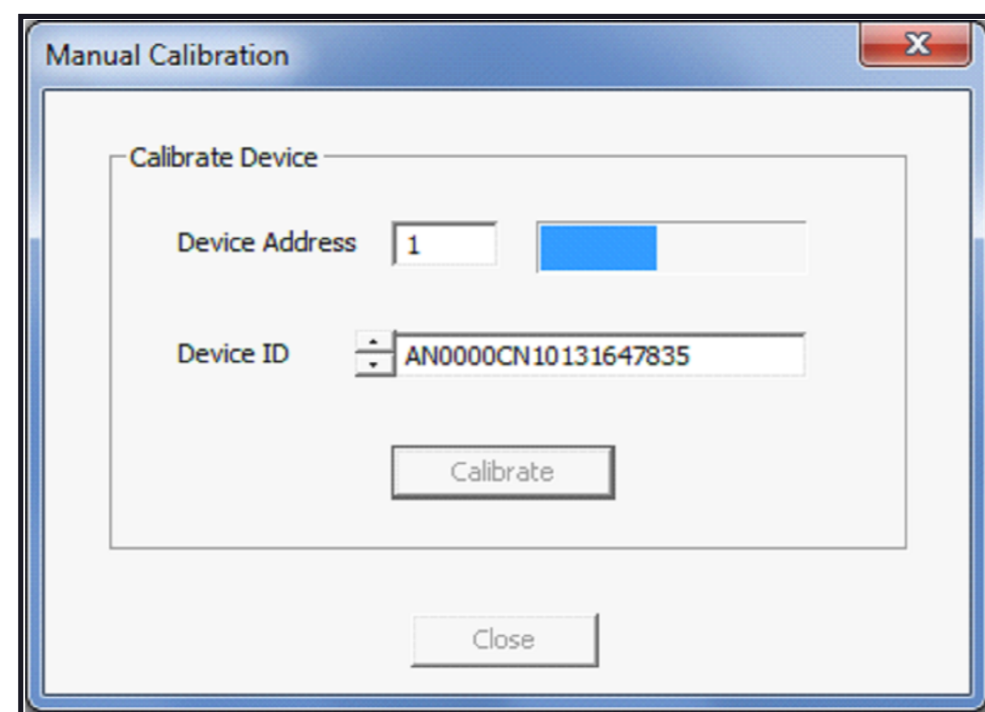
Wear shoes with rubber soles and heels. Wear protective clothing including a long-sleeved shirt and rubber gloves.

(Continued from page 1)

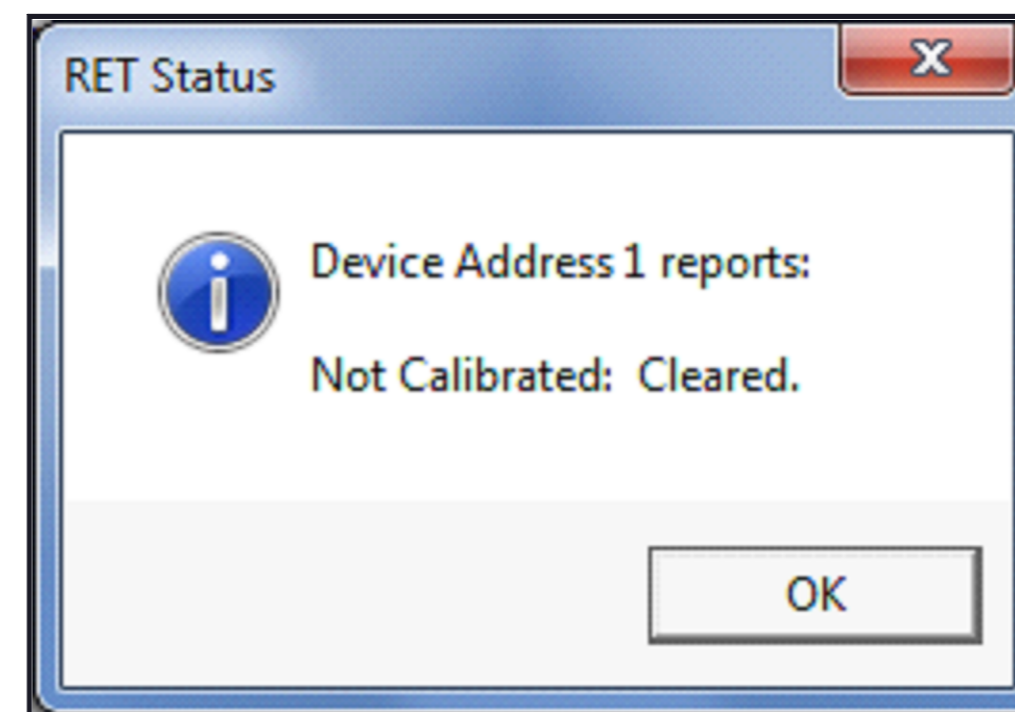


(continued on page 3)

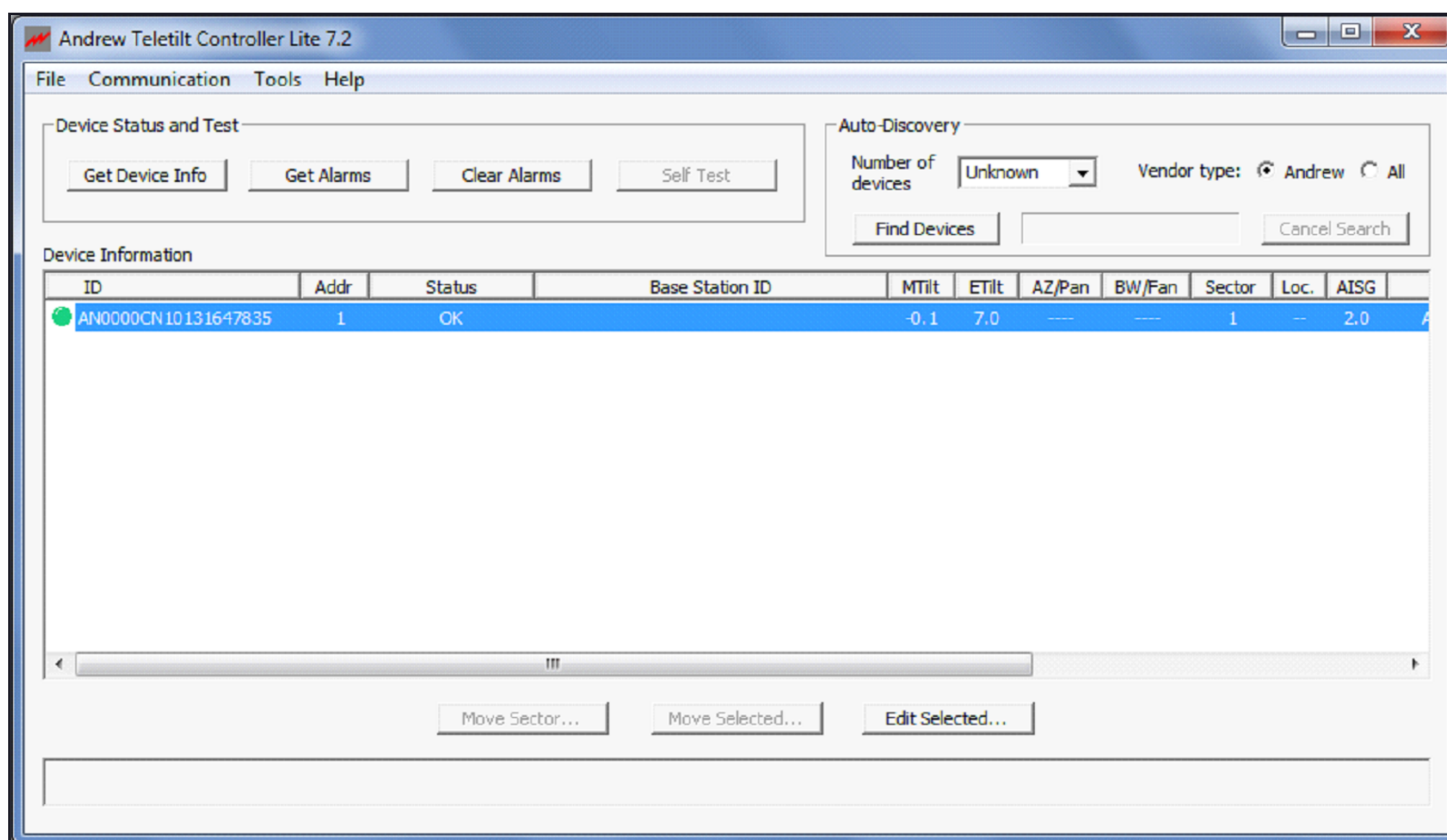
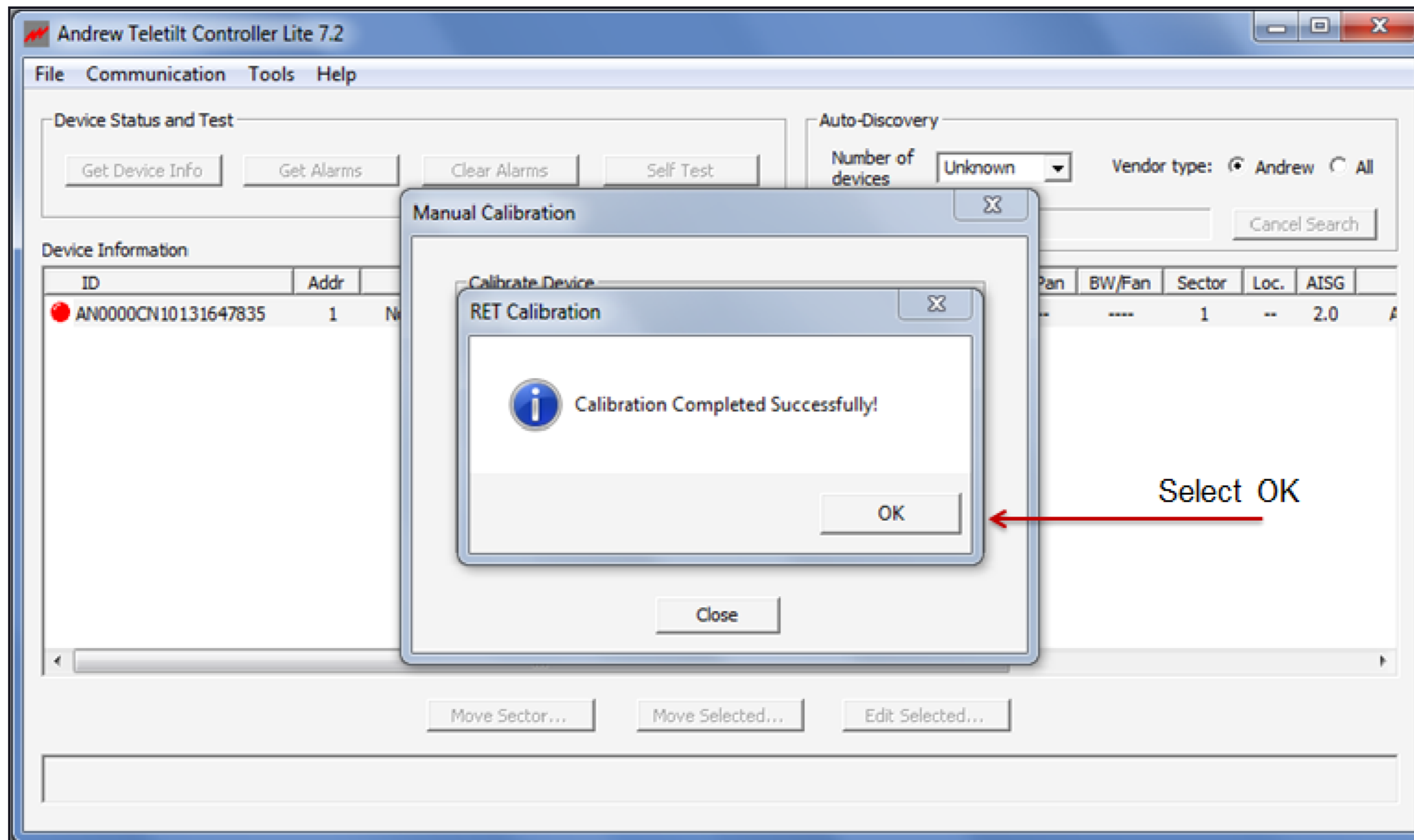
(Continued from page 2)



Calibration in Process



Note that the calibration error message is now cleared



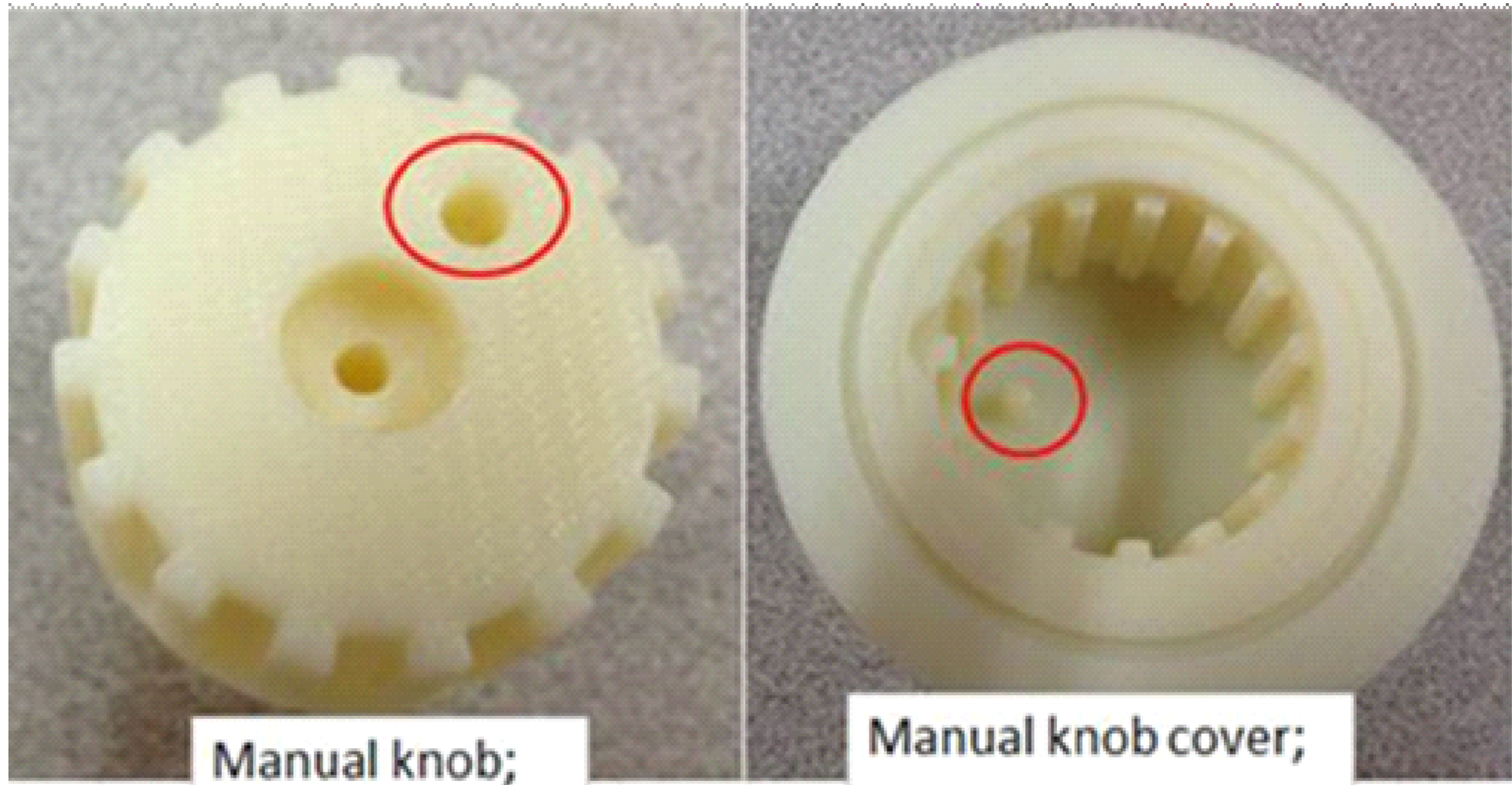
The AccuRET is now calibrated

(continued on page 4)

(Continued from page 3)

Manual Knob Installation

When reinstalling the manual knob, ensure that the small pin on the knob cover is aligned with the hole on the manual knob.



Continue the installation by tightening the retainer screws as shown on page one.