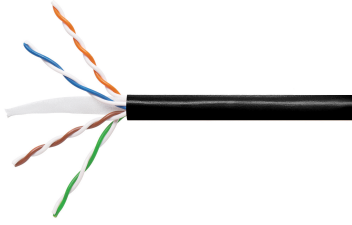


UN884019904/10 | CS340 BLK C6 4/24 U/UTP RL 1KFT



CS340 Category 6 U/UTP filled Cable, outdoor direct burial, black jacket, 4 pair count, 1000 ft (305 m) length, reel

Product Classification

Regional Availability	North America
Portfolio	Uniprise®
Product Type	Twisted pair cable

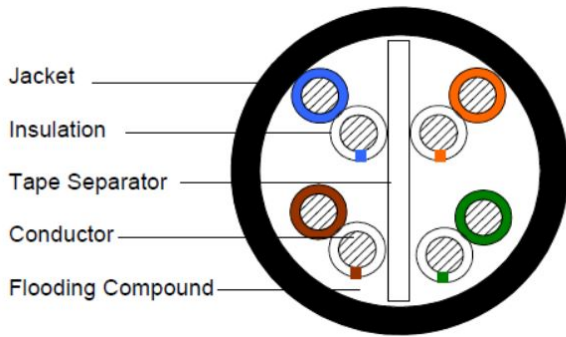
General Specifications

Product Number	CS340
ANSI/TIA Category	6
Cable Component Type	Horizontal
Cable Type	U/UTP (unshielded)
Conductor Type, singles	Solid
Conductors, quantity	8
Jacket Color	Black
Note	All electrical transmission tests include swept frequency measurements
Pairs, quantity	4
Separator Type	Isolator
Transmission Standards	ANSI/TIA-568.2-D CENELEC EN 50288-6-1 ISO/IEC 11801 Class E

Dimensions

Cable Length	304.8 m 1000 ft
Diameter Over Jacket, nominal	6.223 mm 0.245 in
Jacket Thickness	0.635 mm 0.025 in
Conductor Gauge, singles	24 AWG

Cross Section Drawing



Electrical Specifications

Characteristic Impedance	100 ohm
dc Resistance Unbalance, maximum	5 %
dc Resistance, maximum	9.38 ohms/100 m 2.859 ohms/100 ft
Delay Skew, maximum	45 ns
Dielectric Strength, minimum	1500 Vac 2500 Vdc
Mutual Capacitance at Frequency	6.0 nF/100 m @ 1 kHz
Nominal Velocity of Propagation (NVP)	65 %
Operating Frequency, maximum	250 MHz
Operating Voltage, maximum	80 V
Remote Powering	Fully complies with the recommendations set forth by IEEE 802.3bt (Type 4) for the safe delivery of power over LAN cable when installed according to ISO/IEC 14763-2, CENELEC EN 50174-1, CENELEC EN 50174-2 or TIA TSB-184-A

Electrical Cable Performance

CS	CommScope	NEXT	Near End Crosstalk (dB/100m)
STD	Refers to the standard value listed under Transmission Standards in the Electrical Specifications above	PSNEXT	Power Sum Near End Crosstalk (db/100m)
TYP	Typical Electrical Performance	ACRF	Attenuation to Crosstalk Ratio - Far End (dB/100m)
IL	Insertion Loss (dB/100m)	RL	Return Loss (dB)
ACR	Attenuation to Crosstalk Ratio (dB/100m)	ELTCTL	Equal Level Transverse Conversion Transfer Loss (dB/100m)
PSACR	Power Sum Attenuation to Crosstalk Ratio (dB/100m)		
PSACRF	Power Sum Attenuation to Crosstalk Ratio - Far End (dB/100m)		
TCL	Transverse Conversion Loss (dB/100m)		

Freq. MHz	IL		NEXT		ACR		PSNEXT		PSACR		ACRF		PSACRF		RL		TCL	ELTCTL
	STD	TYP	STD	TYP	STD	TYP	STD	TYP	STD	TYP	STD	TYP	STD	TYP	STD	TYP	STD	STD
1	2	1.7	74.3	90.1	72.3	88.4	72.3	88.2	70.3	86.5	67.8	85.2	64.8	83.7	20	30.6	40	35
4	3.8	3.4	65.3	81.3	61.5	77.9	63.3	79.4	59.5	76	55.8	73.5	52.8	72.1	23	29	40	23
8	5.3	4.8	60.8	77	55.4	72.1	58.8	74.9	53.4	70.1	49.7	67.6	46.7	66	24.5	31.6	40	16.9
10	6	5.4	59.3	74.9	53.3	69.5	57.3	73	51.3	67.6	47.8	65.7	44.8	64.1	25	32.7	40	15
16	7.6	6.9	56.2	71.7	48.7	64.8	54.2	69.7	46.7	62.8	43.7	61.6	40.7	59.9	25	34.8	38	10.9
20	8.5	7.7	54.8	69.5	46.3	61.8	52.8	67.7	44.3	60	41.8	59.6	38.8	57.9	25	35.8	37	9
25	9.5	8.6	53.3	67.8	43.8	59.2	51.3	66	41.8	57.4	39.8	57.6	36.8	55.9	24.3	35.6	36	7
31.25	10.7	9.6	51.9	66.7	41.2	57.1	49.9	64.9	39.2	55.2	37.9	55.6	34.9	53.8	23.6	35.6	35.1	
62.5	15.4	13.8	47.4	62.3	32	48.5	45.4	60.4	30	46.6	31.9	48.5	28.9	47	21.5	29.7	32	
100	19.8	17.7	44.3	58.8	24.5	41.1	42.3	57.1	22.5	39.4	27.8	42.5	24.8	41.5	20.1	26.1	30	
155	25.2	22.3	41.4	56.2	16.3	33.9	39.4	54.5	14.3	32.2	24	37.9	21	36.7	18.8	22.6	28.1	
200	29	25.6	39.8	54.2	10.8	28.6	37.8	52.6	8.8	27	21.8	36.5	18.8	35.3	18	20.5	27	
250	32.8	28.9	38.3	51.4	5.5	22.5	36.3	49.9	3.5	21	19.8	35.2	16.8	33.8	17.3	18.6	26	
300		31.9		49.4		17.5		48		16.1		31.9		30.7		17.3		
350		34.8		46.5		11.8		45.2		10.5		30.3		29		16.1		
400		37.3		44.3		7		43		5.7		29.1		27.7		15.1		
450		39.7		43.6		3.9		42.6		2.8		27.1		25.5		14.4		
500		42.3		42.8		0.5		41.7		-0.6		26.7		25		13.9		
550		44.7		42.6		-2.1		41.4		-3.3		25.1		23.6		13.4		
600		46.8		43.5		-3.4		42.3		-4.5		23.4		21.8		13.3		
650		49		43.7		-5.2		42.1		-6.9		22.8		20.7		12.9		

Material Specifications

Conductor Material	Bare copper
Insulation Material	Polyolefin
Jacket Material	PE
Separator Material	Polyolefin

Mechanical Specifications

Pulling Tension, maximum 11.34 kg | 25 lb

UN884019904/10 | CS340 BLK C6 4/24 U/UTP RL 1KFT

Environmental Specifications

Installation temperature	-30 °C to +70 °C (-22 °F to +158 °F)
Operating Temperature	-40 °C to +70 °C (-40 °F to +158 °F)
Environmental Note	UV resistant for outdoor and/or direct burial installations
Environmental Space	Buried
Safety Standard	ANSI/ICEA S-107-704-2012

Packaging and Weights

Cable weight	39.288 kg/km 26.4 lb/kft
Packaging Type	Reel

Regulatory Compliance/Certifications

Agency	Classification
CHINA-ROHS	Below maximum concentration value
ISO 9001:2015	Designed, manufactured and/or distributed under this quality management system
REACH-SVHC	Compliant as per SVHC revision on www.commscope.com/ProductCompliance
ROHS	Compliant
UK-ROHS	Compliant

