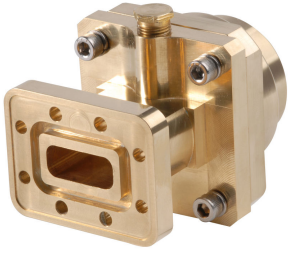


# 190SEM

---



Fixed-tuned PDR100 for elliptical waveguide 90

## Product Classification

**Product Type** Elliptical waveguide connector

## General Specifications

**Attachment Method** Tab-flare | Tool-flare

**Body Style** Straight, fixed-tuned

**Inner Contact Plating** Unplated

**Interface** PDR100

**Outer Contact Plating** Unplated

**Pressurizable** Yes

## Dimensions

**Width** 72.39 mm | 2.85 in

**Length** 80.772 mm | 3.18 in

**Transition Length** 46.228 mm | 1.82 in

**Waveguide Size** WR90 | WG16 | R100

## Electrical Specifications

**Insertion Loss, typical** 0.01 dB

**Operating Frequency Band** 10.2 – 11.7 GHz

**Peak Power at Frequency, maximum** 44.90 kW @ 11.20 GHz

## Material Specifications

**Material Type** Brass

# 190SEM

---

## Environmental Specifications

**Operating Temperature** -55 °C to +85 °C (-67 °F to +185 °F)

**Storage Temperature** -55 °C to +85 °C (-67 °F to +185 °F)

## Packaging and Weights

**Weight, net** 1 kg | 2.205 lb

## Regulatory Compliance/Certifications

### Agency

### Classification

CHINA-ROHS

Above maximum concentration value

ISO 9001:2015

Designed, manufactured and/or distributed under this quality management system

REACH-SVHC

Compliant as per SVHC revision on [www.commscope.com/ProductCompliance](http://www.commscope.com/ProductCompliance)

ROHS

Compliant/Exempted

UK-ROHS

Compliant/Exempted



## \* Footnotes

**Insertion Loss, typical**  $0.05\sqrt{\text{freq}}$  (GHz) (not applicable for elliptical waveguide)