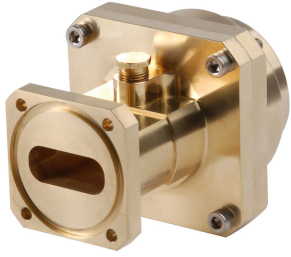


# 177SCM

---



Fixed-tuned PBR84 for elliptical waveguide 77

## Product Classification

**Product Type** Elliptical waveguide connector

## General Specifications

**Attachment Method** Tab-flare | Tool-flare

**Body Style** Straight, fixed-tuned

**Inner Contact Plating** Unplated

**Interface** PBR84

**Outer Contact Plating** Unplated

**Pressurizable** Yes

## Dimensions

**Width** 70.104 mm | 2.76 in

**Length** 92.202 mm | 3.63 in

**Transition Length** 55.118 mm | 2.17 in

**Waveguide Size** WR112 | WG15 | R84

## Electrical Specifications

**Insertion Loss, typical** 0.01 dB

**Operating Frequency Band** 7.125 – 8.5 GHz

**Peak Power at Frequency, maximum** 63.00 kW @ 7.80 GHz

## Material Specifications

**Material Type** Brass

# 177SCM

---

## Environmental Specifications

**Operating Temperature** -55 °C to +85 °C (-67 °F to +185 °F)

**Storage Temperature** -55 °C to +85 °C (-67 °F to +185 °F)

## Packaging and Weights

**Weight, net** 1.4 kg | 3.086 lb

## Regulatory Compliance/Certifications

### Agency

CHINA-ROHS

ISO 9001:2015

REACH-SVHC

ROHS

### Classification

Below maximum concentration value

Designed, manufactured and/or distributed under this quality management system

Compliant as per SVHC revision on [www.commscope.com/ProductCompliance](http://www.commscope.com/ProductCompliance)

Compliant



## \* Footnotes

**Insertion Loss, typical** 0.05v<sup>-</sup>freq (GHz) (not applicable for elliptical waveguide)