

# FF-65B-R2

---



4-port sector antenna, 4x 617–894 MHz, 65° HPBW, 2x RET, 600MHzReady Antenna Technology

## General Specifications

<b>Antenna Type</b>	Sector
<b>Band</b>	Single band
<b>Color</b>	Light Gray (RAL 7035)
<b>Grounding Type</b>	RF connector inner conductor and body grounded to reflector and mounting bracket
<b>Performance Note</b>	Outdoor usage
<b>RF Connector Interface</b>	4.3-10 Female
<b>RF Connector Location</b>	Bottom
<b>RF Connector Quantity, low band</b>	4
<b>RF Connector Quantity, total</b>	4

## Remote Electrical Tilt (RET) Information

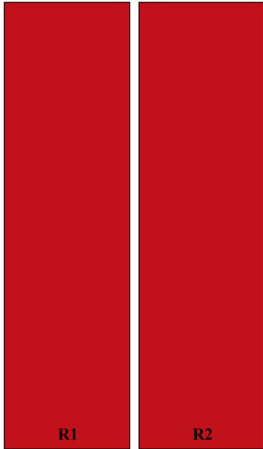
<b>RET Hardware</b>	CommRET v2
<b>RET Interface</b>	8-pin DIN Female   8-pin DIN Male
<b>RET Interface, quantity</b>	1 female   1 male
<b>Input Voltage</b>	10–30 Vdc
<b>Internal RET</b>	Low band (2)
<b>Power Consumption, active state, maximum</b>	13 W
<b>Power Consumption, idle state, maximum</b>	2 W
<b>Protocol</b>	3GPP/AISG 2.0 (Single RET)

## Dimensions

<b>Width</b>	498 mm   19.606 in
<b>Depth</b>	197 mm   7.756 in
<b>Length</b>	1828 mm   71.969 in
<b>Net Weight, antenna only</b>	29.7 kg   65.477 lb

# FF-65B-R2

## Array Layout



Array ID	Frequency (MHz)	RF Connector	RET (SRET)	AISG RET UID
R1	617-894	1 - 2	1	CPxxxxxxxxxxxxR1
R2	617-894	3 - 4	2	CPxxxxxxxxxxxxR2

(Sizes of colored boxes are not true depictions of array sizes)

## Port Configuration



## Electrical Specifications

<b>Impedance</b>	50 ohm
<b>Operating Frequency Band</b>	617 – 894 MHz
<b>Polarization</b>	±45°
<b>Total Input Power, maximum</b>	900 W @ 50 °C

# FF-65B-R2

## Electrical Specifications

	<b>617-698</b>	<b>698-894</b>
<b>Frequency Band, MHz</b>		
<b>RF Port</b>	1-4	1-4
<b>Gain, dBi</b>	13.9	15.1
<b>Beamwidth, Horizontal, degrees</b>	70	60
<b>Beamwidth, Vertical, degrees</b>	14.6	12.3
<b>Beam Tilt, degrees</b>	2-14	2-14
<b>USLS (First Lobe), dB</b>	16	15
<b>Front-to-Back Ratio at 180°, dB</b>	27	30
<b>Front-to-Back Total Power at 180° ± 30°, dB</b>	21	20
<b>Isolation, Cross Polarization, dB</b>	25	25
<b>Isolation, Inter-band, dB</b>	25	25
<b>VSWR   Return loss, dB</b>	1.5   14.0	1.5   14.0
<b>PIM, 3rd Order, 2 x 20 W, dBc</b>	-150	-153
<b>Input Power per Port at 50°C, maximum, watts</b>	250	250

## Electrical Specifications, BASTA

	<b>617-698</b>	<b>698-894</b>
<b>Frequency Band, MHz</b>		
<b>Gain by all Beam Tilts, average, dBi</b>	13.4	14
<b>Gain by all Beam Tilts Tolerance, dB</b>	±0.9	±1.2
<b>Beamwidth, Horizontal Tolerance, degrees</b>	±7	±6
<b>Beamwidth, Vertical Tolerance, degrees</b>	±1.3	±1.5
<b>USLS, beampeak to 20° above beampeak, dB</b>	16	16
<b>CPR at Boresight, dB</b>	18	17
<b>CPR at Sector, dB</b>	10	8

## Mechanical Specifications

<b>Wind Loading @ Velocity, frontal</b>	711.0 N @ 150 km/h (159.8 lbf @ 150 km/h)
<b>Wind Loading @ Velocity, lateral</b>	229.0 N @ 150 km/h (51.5 lbf @ 150 km/h)
<b>Wind Loading @ Velocity, maximum</b>	998.0 N @ 150 km/h (224.4 lbf @ 150 km/h)
<b>Wind Loading @ Velocity, rear</b>	563.0 N @ 150 km/h (126.6 lbf @ 150 km/h)
<b>Wind Speed, maximum</b>	241 km/h (150 mph)

## Packaging and Weights

<b>Width, packed</b>	565 mm   22.244 in
----------------------	--------------------

# FF-65B-R2

---

<b>Depth, packed</b>	309 mm   12.165 in
<b>Length, packed</b>	2015 mm   79.331 in
<b>Weight, gross</b>	43.4 kg   95.681 lb

## Regulatory Compliance/Certifications

<b>Agency</b>	<b>Classification</b>
CHINA-ROHS	Above maximum concentration value
ISO 9001:2015	Designed, manufactured and/or distributed under this quality management system
ROHS	Compliant/Exempted
UK-ROHS	Compliant/Exempted



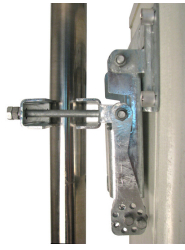
## Included Products

- BSAMNT-3 – Wide Profile Antenna Downtilt Mounting Kit for 2.4 - 4.5 in (60 - 115 mm) OD round members. Kit contains one scissor top bracket set and one bottom bracket set.

## \* Footnotes

**Performance Note** Severe environmental conditions may degrade optimum performance

# BSAMNT-3



Wide Profile Antenna Downtilt Mounting Kit for 2.4 - 4.5 in (60 - 115 mm) OD round members. Kit contains one scissor top bracket set and one bottom bracket set.

## Product Classification

**Product Type** Downtilt mounting kit

## General Specifications

**Application** Outdoor

**Color** Silver

## Dimensions

**Compatible Diameter, maximum** 115 mm | 4.528 in

**Compatible Diameter, minimum** 60 mm | 2.362 in

**Weight, net** 6.2 kg | 13.669 lb

## Material Specifications

**Material Type** Galvanized steel

## Packaging and Weights

**Included** Brackets | Hardware

**Packaging quantity** 1

**Weight, gross** 6.4 kg | 14.11 lb

## Regulatory Compliance/Certifications

Agency	Classification
CE	Compliant with the relevant CE product directives
CHINA-ROHS	Below maximum concentration value
ISO 9001:2015	Designed, manufactured and/or distributed under this quality management system
REACH-SVHC	Compliant as per SVHC revision on <a href="http://www.commscope.com/ProductCompliance">www.commscope.com/ProductCompliance</a>
ROHS	Compliant
UK-ROHS	Compliant

# BSAMNT-3

---

