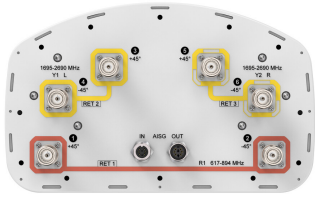


FVV-65B-R3



6-port sector antenna, 2x 617-894 and 4x 1695-2690 MHz, 65° HPBW, 3x RET, 600 MHz-Ready Antenna Technology

General Specifications

Antenna Type	Sector
Band	Multiband
Color	Light Gray (RAL 7035)
Grounding Type	RF connector inner conductor and body grounded to reflector and mounting bracket
Performance Note	Outdoor usage
Radome Material	Fiberglass, UV resistant
Reflector Material	Aluminum
RF Connector Interface	4.3-10 Female
RF Connector Location	Bottom
RF Connector Quantity, high band	4
RF Connector Quantity, low band	2
RF Connector Quantity, total	6

Remote Electrical Tilt (RET) Information

RET Hardware	CommRET v2
RET Interface	8-pin DIN Female 8-pin DIN Male
RET Interface, quantity	1 female 1 male
Input Voltage	10-30 Vdc
Internal RET	High band (2) Low band (1)
Power Consumption, active state, maximum	10 W
Power Consumption, idle state, maximum	2 W
Protocol	3GPP/AISG 2.0

Dimensions

Width	300 mm 11.811 in
--------------	--------------------

FVV-65B-R3

Depth	181 mm 7.126 in
Length	1828 mm 71.969 in
Net Weight, antenna only	19.6 kg 43.211 lb

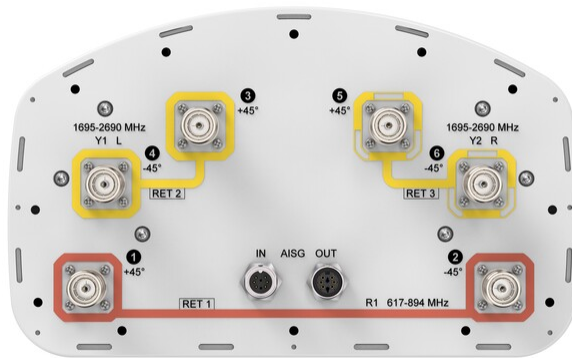
Array Layout



Array ID	Frequency (MHz)	RF Connector	RET (SRET)	AISG No.	AISG RET UID
R1	617-894	1 - 2	1	AISG1	CPxxxxxxxxxxxxxxxxR1
Y1	1695-2690	3 - 4	2	AISG1	CPxxxxxxxxxxxxxxxxY1
Y2	1695-2690	5 - 6	3	AISG1	CPxxxxxxxxxxxxxxxxY2

(Sizes of colored boxes are not true depictions of array sizes)

Port Configuration



Electrical Specifications

Impedance	50 ohm
Operating Frequency Band	1695 – 2690 MHz 617 – 894 MHz
Polarization	±45°
Total Input Power, maximum	900 W @ 50 °C

FVV-65B-R3

Electrical Specifications

	R1	R1	Y1,Y2	Y1,Y2	Y1,Y2	Y1,Y2	Y1,Y2
Frequency Band, MHz	617-698	698-894	1695-1880	1850-1990	1920-2200	2300-2500	2500-2690
RF Port	1,2	1,2	3,4,5,6	3,4,5,6	3,4,5,6	3,4,5,6	3,4,5,6
Gain, dBi	14.3	14.7	17.5	18.1	18.4	18.7	18.7
Beamwidth, Horizontal, degrees	71	70	66	64	64	63	60
Beamwidth, Vertical, degrees	14.5	12.2	5.6	5.3	5	4.4	4.2
Beam Tilt, degrees	2-14	2-14	2-12	2-12	2-12	2-12	2-12
USLS (First Lobe), dB	20	19	18	18	19	20	20
Front-to-Back Ratio at 180°, dB	25	29	37	35	31	28	32
Isolation, Cross Polarization, dB	25	25	25	25	25	25	25
Isolation, Inter-band, dB	28	28	28	28	28	28	28
VSWR Return loss, dB	1.5 14.0	1.5 14.0	1.5 14.0	1.5 14.0	1.5 14.0	1.5 14.0	1.5 14.0
PIM, 3rd Order, 2 x 20 W, dBc	-150	-150	-150	-150	-150	-150	-150
Input Power per Port at 50°C, maximum, watts	250	250	200	200	200	200	200

Electrical Specifications, BASTA

	617-698	698-894	1695-1880	1850-1990	1920-2200	2300-2500	2500-2690
Frequency Band, MHz	617-698	698-894	1695-1880	1850-1990	1920-2200	2300-2500	2500-2690
Gain by all Beam Tilts, average, dBi	14	14.3	17	17.6	18.1	18.4	18.4
Gain by all Beam Tilts Tolerance, dB	±0.4	±0.5	±0.7	±0.5	±0.5	±0.4	±0.4
Beamwidth, Horizontal Tolerance, degrees	±2	±3.3	±3.5	±2.7	±2.9	±6.7	±7.5
Beamwidth, Vertical Tolerance, degrees	±1.3	±1.5	±0.4	±0.2	±0.3	±0.2	±0.2
USLS, beampeak to 20° above beampeak, dB		17	15	17	17	17	13
Front-to-Back Total Power at 180° ± 30°, dB	20	22	24	26	26	24	27
CPR at Boresight, dB	16	15	17	18	19	18	16
CPR at Sector, dB	9	9	8	9	6	4	3

Mechanical Specifications

FVV-65B-R3

Effective Projective Area (EPA), frontal	0.26 m ² 2.799 ft ²
Effective Projective Area (EPA), lateral	0.22 m ² 2.368 ft ²
Wind Loading @ Velocity, frontal	278.0 N @ 150 km/h (62.5 lbf @ 150 km/h)
Wind Loading @ Velocity, lateral	230.0 N @ 150 km/h (51.7 lbf @ 150 km/h)
Wind Loading @ Velocity, maximum	537.0 N @ 150 km/h (120.7 lbf @ 150 km/h)
Wind Loading @ Velocity, rear	282.0 N @ 150 km/h (63.4 lbf @ 150 km/h)
Wind Speed, maximum	241 km/h (150 mph)

Packaging and Weights

Width, packed	380 mm 14.961 in
Depth, packed	295 mm 11.614 in
Length, packed	1956 mm 77.008 in
Weight, gross	30.9 kg 68.123 lb

Regulatory Compliance/Certifications

Agency	Classification
CHINA-ROHS	Above maximum concentration value
ISO 9001:2015	Designed, manufactured and/or distributed under this quality management system
ROHS	Compliant/Exempted
UK-ROHS	Compliant/Exempted



Included Products

BSAMNT-3	-	Wide Profile Antenna Downtilt Mounting Kit for 2.4 - 4.5 in (60 - 115 mm) OD round members. Kit contains one scissor top bracket set and one bottom bracket set.
----------	---	--

* Footnotes

Performance Note	Severe environmental conditions may degrade optimum performance
-------------------------	---