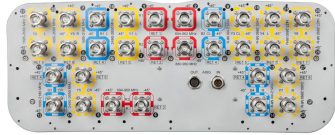


# EGRZZH4T4VV65DR8V2



30-port sector antenna, 2x 694-862 (R1), 2x 880-960 (R2), 2x 694-960 (R3), 4x 1427-2690 (Y4/Y6), 8x 1695-2180 (B1-B4), 8x 2490-2690 (Y1/Y3/Y5/Y7) & 4x 1695-2690 (Y2&Y8) MHz, 65° HPBW, 8x RET.

- All Internal RET actuators are connected in “Cascaded SRET” configuration

## General Specifications

<b>Antenna Type</b>	Sector
<b>Band</b>	Multiband
<b>Grounding Type</b>	RF connector inner conductor and body grounded to reflector and mounting bracket
<b>Performance Note</b>	Outdoor usage   Wind loading figures are validated by wind tunnel measurements described in white paper WP-112534-EN
<b>Radome Material</b>	Fiberglass, UV resistant
<b>Reflector Material</b>	Aluminum
<b>RF Connector Interface</b>	4.3-10 Female
<b>RF Connector Location</b>	Bottom
<b>RF Connector Quantity, high band</b>	24
<b>RF Connector Quantity, low band</b>	6
<b>RF Connector Quantity, total</b>	30

## Remote Electrical Tilt (RET) Information

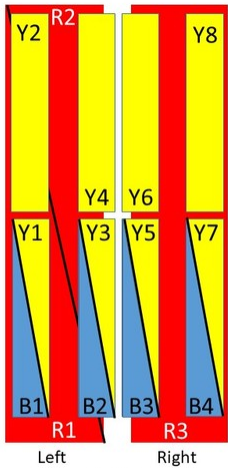
<b>RET Hardware</b>	CommRET v1   CommRET v2
<b>RET Interface</b>	8-pin DIN Female   8-pin DIN Male
<b>RET Interface, quantity</b>	1 female   1 male
<b>Input Voltage</b>	10–30 Vdc
<b>Internal RET</b>	High band (5)   Low band (3)
<b>Power Consumption, idle state, maximum</b>	2 W
<b>Power Consumption, normal conditions, maximum</b>	9 W
<b>Protocol</b>	3GPP/AISG 2.0 (Single RET)

# EGRZZH4T4VV65DR8V2

## Dimensions

<b>Width</b>	498 mm   19.606 in
<b>Depth</b>	197 mm   7.756 in
<b>Length</b>	2688 mm   105.827 in
<b>Net Weight, without mounting kit</b>	69.6 kg   153.442 lb

## Array Layout

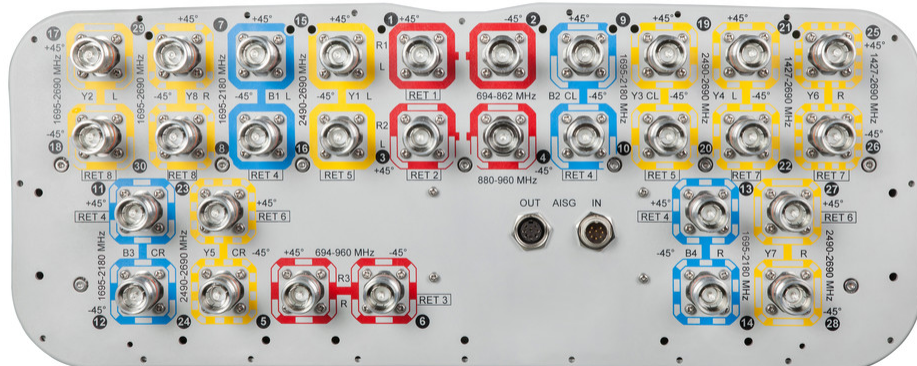


(Sizes of colored boxes are not true depictions of array sizes)

Array	Freq (MHz)	Conns	RET (SRET)	AISG RET UID
R1	694-862	1-2	1	CPxxxxxxxxxxxxxxxxR1
R2	880-960	3-4	2	CPxxxxxxxxxxxxxxxxR2
R3	694-960	5-6	3	CPxxxxxxxxxxxxxxxxR3
B1	1695-2180	7-8	4	CPxxxxxxxxxxxxxxxxB1
B2	1695-2180	9-10		
B3	1695-2180	11-12		
B4	1695-2180	13-14		
Y1	2490-2690	15-16	5	CPxxxxxxxxxxxxxxxxY1
Y3	2490-2690	19-20		
Y5	2490-2690	23-24	6	CPxxxxxxxxxxxxxxxxY5
Y7	2490-2690	27-28		
Y4	1427-2690	21-22	7	CPxxxxxxxxxxxxxxxxY4
Y6	1427-2690	25-26		
Y2	1695-2690	17-18	8	CPxxxxxxxxxxxxxxxxY2
Y8	1695-2690	29-30		

## Port Configuration

# EGRZZH4T4VV65DR8V2



## Electrical Specifications

<b>Impedance</b>	50 ohm
<b>Operating Frequency Band</b>	1427 – 2690 MHz   1695 – 2180 MHz   1695 – 2690 MHz   2490 – 2690 MHz   694 – 862 MHz   694 – 960 MHz   880 – 960 MHz
<b>Polarization</b>	±45°
<b>Total Input Power, maximum</b>	900 W @ 50 °C

## Electrical Specifications

	R1	R2	R3	B1-B4	B1-B4	Y1/Y3/Y5/Y7	Y2/Y4/Y6/Y8	Y2/Y4/Y6/Y8	Y4/Y6
<b>Frequency Band, MHz</b>	<b>694–862</b>	<b>880–960</b>	<b>694–960</b>	<b>1695–1880</b>	<b>1920–2180</b>	<b>2490–2690</b>	<b>1695–2180</b>	<b>2490–2690</b>	<b>1427–1518</b>
<b>Gain, dBi</b>	15.2	15.4	16.1	16.2	17.1	17.8	16.9	17.6	14.8
<b>Beamwidth, Horizontal, degrees</b>	68	65	67	69	62	57	62	55	71
<b>Beamwidth, Vertical, degrees</b>	8.6	7.4	8.1	7.4	6.6	5.4	7.1	5.4	9.3
<b>Beam Tilt, degrees</b>	2–14	2–14	2–14	2–12	2–12	2–12	2–12	2–12	2–12
<b>USLS (First Lobe), dB</b>	17	20	19	16	19	17	17	22	18
<b>Front-to-Back Ratio at 180°, dB</b>	32	26	29	32	30	28	34	31	35
<b>Isolation, Cross Polarization, dB</b>	28	28	28	25	25	25	25	25	25

# EGRZZH4T4VV65DR8V2

<b>Isolation, Inter-band, dB</b>	28	28	28	25	25	25	25	25	25
<b>VSWR   Return loss, dB</b>	1.5 14.0	1.5 14.0	1.5 14.0	1.5 14.0	1.5 14.0	1.5 14.0	1.5 14.0	1.5 14.0	1.5 14.0
<b>PIM, 3rd Order, 2 x 20 W, dBc</b>	-150	-150	-150	-150	-150	-150	-150	-150	-150
<b>Input Power per Port at 50°C, maximum, watts</b>	200	200	200	200	200	150	200	200	200

## Electrical Specifications, BASTA

<b>Frequency Band, MHz</b>	<b>694–862</b>	<b>880–960</b>	<b>694–960</b>	<b>1695–1880</b>	<b>1920–2180</b>	<b>2490–2690</b>	<b>1695–2180</b>	<b>2490–2690</b>	<b>1427–1518</b>
<b>Gain by all Beam Tilts, average, dBi</b>	14.9	15.1	15.7	15.7	16.7	17.1	16.1	17.2	14.5
<b>Gain by all Beam Tilts Tolerance, dB</b>	±0.4	±0.4	±0.6	±0.5	±0.6	±0.7	±1.1	±0.6	±0.4
<b>Gain by Beam Tilt, average, dBi</b>	2° 14.9 8° 15.0 14° 14.8	2° 15.0 8° 15.3 14° 14.8	2° 15.6 8° 15.8 14° 15.4	2° 15.5 7° 15.7 12° 15.7	2° 16.3 7° 16.8 12° 16.6	2° 16.7 7° 17.4 12° 16.8	2° 15.8 7° 16.2 12° 16.0	2° 16.7 7° 17.4 12° 17.2	2° 14.4 7° 14.6 12° 14.5
<b>Beamwidth, Horizontal Tolerance, degrees</b>	±7.8	±5.9	±6.8	±6.2	±5.1	±6.1	±8.9	±4.4	±7.6
<b>Beamwidth, Vertical Tolerance, degrees</b>	±0.8	±0.4	±1.1	±0.3	±0.4	±0.5	±1	±0.3	±0.5
<b>USLS, beampeak to 20° above beampeak, dB</b>	13	14	16	16	14	16	16	15	16
<b>Front-to-Back Total Power at 180° ± 30°, dB</b>	21	22	22	26	25	21	26	26	26
<b>CPR at Boresight, dB</b>	19	17	18	18	21	19	19	21	17
<b>CPR at Sector, dB</b>	9	12	11	8	6	4	6	3	3

## Mechanical Specifications

<b>Mechanical Tilt Range</b>	0°–12°
<b>Wind Loading @ Velocity, frontal</b>	1,070.0 N @ 150 km/h (240.5 lbf @ 150 km/h)
<b>Wind Loading @ Velocity, lateral</b>	375.0 N @ 150 km/h (84.3 lbf @ 150 km/h)
<b>Wind Loading @ Velocity, maximum</b>	1,385.0 N @ 150 km/h (311.4 lbf @ 150 km/h)
<b>Wind Loading @ Velocity, rear</b>	880.0 N @ 150 km/h (197.8 lbf @ 150 km/h)
<b>Wind Speed, maximum</b>	241 km/h (150 mph)

## Packaging and Weights

<b>Width, packed</b>	565 mm   22.244 in
<b>Depth, packed</b>	309 mm   12.165 in

# EGRZZH4T4VV65DR8V2

---

**Length, packed** 2935 mm | 115.551 in

**Weight, gross** 90.6 kg | 199.739 lb

## Regulatory Compliance/Certifications

Agency	Classification
CHINA-ROHS	Below maximum concentration value
ISO 9001:2015	Designed, manufactured and/or distributed under this quality management system
REACH-SVHC	Compliant as per SVHC revision on <a href="http://www.commscope.com/ProductCompliance">www.commscope.com/ProductCompliance</a>
ROHS	Compliant
UK-ROHS	Compliant



## Included Products

- BSAMNT-4 – Wide Profile Antenna Downtilt Mounting Kit for 2.4 - 4.5 in (60 - 115 mm) OD round members. Kit contains one scissor top bracket set and one bottom bracket set.
- BSAMNT-M4 – Middle Downtilt Mounting Kit for Long Antennas for 2.4 - 4.5 in (60 - 115 mm) OD round members. Kit contains one scissor bracket set.

## \* Footnotes

**Performance Note** Severe environmental conditions may degrade optimum performance

# BSAMNT-4



Wide Profile Antenna Downtilt Mounting Kit for 2.4 - 4.5 in (60 - 115 mm) OD round members. Kit contains one scissor top bracket set and one bottom bracket set.

## Product Classification

**Product Type** Downtilt mounting kit

## General Specifications

**Application** Outdoor

**Color** Silver

## Dimensions

**Compatible Diameter, maximum** 115 mm | 4.528 in

**Compatible Diameter, minimum** 60 mm | 2.362 in

**Weight, net** 6.5 kg | 14.33 lb

## Material Specifications

**Material Type** Galvanized steel

## Packaging and Weights

**Included** Brackets | Hardware

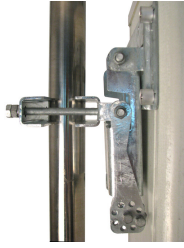
**Packaging quantity** 1

## Regulatory Compliance/Certifications

Agency	Classification
CHINA-ROHS	Below maximum concentration value
ISO 9001:2015	Designed, manufactured and/or distributed under this quality management system
REACH-SVHC	Compliant as per SVHC revision on <a href="http://www.commscope.com/ProductCompliance">www.commscope.com/ProductCompliance</a>
ROHS	Compliant
UK-ROHS	Compliant



# BSAMNT-M4



Middle Downtilt Mounting Kit for Long Antennas for 2.4 - 4.5 in (60 - 115 mm) OD round members. Kit contains one scissor bracket set.

## Product Classification

**Product Type** Downtilt mounting kit

## General Specifications

**Application** Outdoor

**Color** Silver

## Dimensions

**Compatible Diameter, maximum** 115 mm | 4.528 in

**Compatible Diameter, minimum** 60 mm | 2.362 in

**Weight, net** 4.6 kg | 10.141 lb

## Material Specifications

**Material Type** Galvanized steel

## Packaging and Weights

**Included** Brackets | Hardware

**Packaging quantity** 1

## Regulatory Compliance/Certifications

Agency	Classification
CHINA-ROHS	Below maximum concentration value
ISO 9001:2015	Designed, manufactured and/or distributed under this quality management system
REACH-SVHC	Compliant as per SVHC revision on <a href="http://www.commscope.com/ProductCompliance">www.commscope.com/ProductCompliance</a>
ROHS	Compliant
UK-ROHS	Compliant

