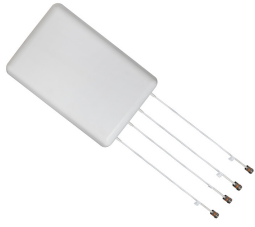


# CMAX-DMF-43-UW-153



Low PIM Directional MIMO In-Building Antenna, 617–960 MHz, 1695–2700 MHz, 3300–4200MHz, and 4800–6000MHz 4.3-10, (2 PORTS 617-960 and 1695-2700MHz, 2 PORTS 3300-4200 and 4800-6000MHz)

## OBSOLETE

This product was discontinued on: December 30, 2023

### Replaced By:

CMAX-DMF-43-UW153 Low PIM Directional MIMO In-Building Antenna, 4G/5G/C-Band, 617–960 MHz, 1695–2700 MHz, 3300–4200MHz, and 4800–6000MHz 4.3-10

## Product Classification

**Product Type** In-building antenna

## General Specifications

**Application** Indoor  
**Antenna Type** Directional  
**Antenna Array Characteristic** MIMO 2x2  
**Polarization** ±45°  
**Color** White (RAL 9016)  
**Number of Ports** 4  
**Pigtail Cable** 670-141SXE, plenum rated  
**Radome Material** ASA+PC, UV stabilized  
**RF Connector Interface** 4.3-10 Female

## Dimensions

**Height** 120 mm | 4.724 in  
**Width** 310 mm | 12.205 in  
**Length** 450 mm | 17.717 in  
**Pigtail Length** 450 mm | 17.717 in

## Electrical Specifications

**Impedance** 50 ohm

# CMAX-DMF-43-UW-153

**Operating Frequency Band** 1695 – 2700 MHz | 3300 – 4000 MHz | 4800 – 6000 MHz | 617 – 698 MHz | 698 – 960 MHz

**Electrical Note** Values typical, unless otherwise stated

## Electrical Specifications

Frequency Band, MHz	617–698	698–960	1695–2200	2200–2700	3300–4200	4800–6000
Gain, dBi	7.7	7.9	8.8	9	8	8.2
Beamwidth, Horizontal, degrees	75	73	62	64	64	62
Beamwidth, Vertical, degrees	72	66	57	64	65	61
Front-to-Back Ratio, Copolarization 180° ± 30°, dB	17	17	20	15	17	17
Isolation, Cross Polarization, dB	20	20	25	25	20	22
VSWR   Return loss, dB	1.7 11.7	1.6 12.7	1.5 14.0	1.5 14.0	1.7 11.7	1.7 11.7
PIM, 3rd Order, 2 x 20 W, dBc	-153	-153	-153	-153	-153	-153
Input Power per Port, maximum, watts	100	100	100	100	100	100

## Environmental Specifications

**Operating Temperature** -40 °C to +60 °C (-40 °F to +140 °F)

**Relative Humidity** Up to 100%

## Packaging and Weights

<b>Height, packed</b>	190 mm   7.48 in
<b>Width, packed</b>	340 mm   13.386 in
<b>Length, packed</b>	645 mm   25.394 in
<b>Included</b>	Mounting bracket
<b>Weight, gross</b>	4.6 kg   10.141 lb
<b>Weight, net</b>	3.1 kg   6.834 lb

## Regulatory Compliance/Certifications

Agency	Classification
CHINA-ROHS	Below maximum concentration value
ROHS	Compliant
UK-ROHS	Compliant

# CMAX-DMF-43-UW-153

---

