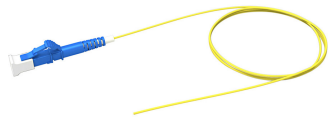


UDGLCUC21

Base Product



Ultra Low Loss (ULL) Singlemode LC/UPC to Unconnectorized, 1.6 mm Simplex Fiber Pigtail, Plenum

Product Classification

| | |
|------------------------------|--|
| Regional Availability | Asia Australia/New Zealand Europe Latin America Middle East /Africa North America |
| Portfolio | CommScope® |
| Product Type | Fiber pigtail, jacketed |
| Product Brand | SYSTIMAX ULL |
| Product Series | UDG |
| Ordering Note | For lengths greater than 999 ft (304 m), orders must be in meters Minimum length may vary based on cable configuration |

General Specifications

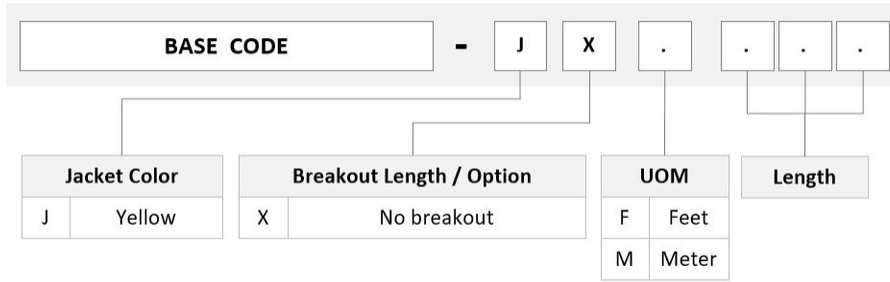
| | |
|-------------------------------|--------|
| Color, boot A | Blue |
| Color, connector A | Blue |
| Interface, Connector A | LC/UPC |
| Jacket Color | Yellow |
| Total Fibers, quantity | 1 |

Dimensions

| | |
|---|-------------------|
| Cable Assembly Length Range (m) | 1 – 61 |
| Cable Assembly Length Range (ft) | 2 – 200 |
| Diameter Over Jacket | 1.6 mm 0.063 in |

Ordering Tree

UDGLCUC21



Mechanical Specifications

Cable Retention Strength, maximum 11.24 lb @ 0 ° | 4.40 lb @ 90 °

Optical Specifications

Fiber Mode Singlemode

Fiber Type G.657.A2, TeraSPEED®

Environmental Specifications

Operating Temperature -10 °C to +60 °C (+14 °F to +140 °F)

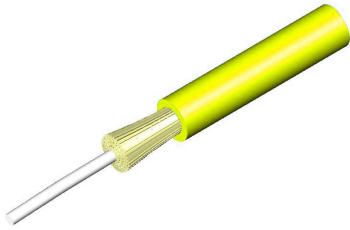
Environmental Space Plenum

Regulatory Compliance/Certifications

| Agency | Classification |
|---------------|--|
| ISO 9001:2015 | Designed, manufactured and/or distributed under this quality management system |

Included Products

- 760238067 – 1.6 mm Plenum Simplex Cable
- P-001-SP-8G-F16YL
- 860637435 – LC/UPC Connector, Singlemode, Blue, Short Boot



1.6 mm Plenum Simplex Cable

Product Classification

| | |
|------------------------------|---|
| Regional Availability | Asia Australia/New Zealand Latin America Middle East/Africa North America |
| Portfolio | CommScope® |
| Product Type | Fiber indoor cable |
| Product Series | P-SP |

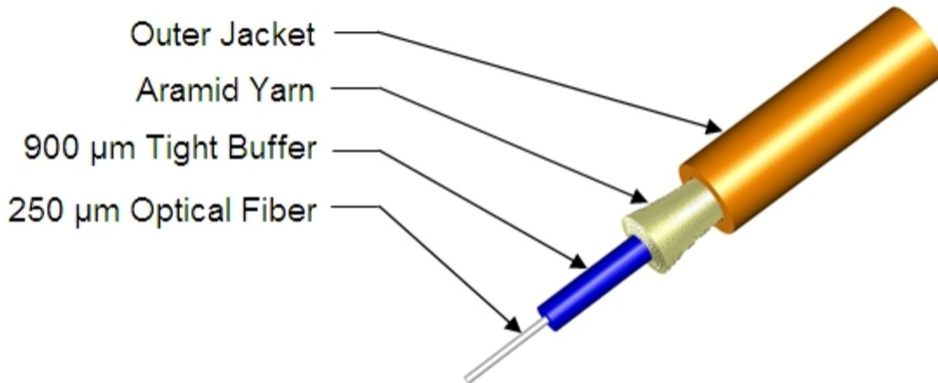
General Specifications

| | |
|--------------------------|-------------|
| Cable Type | Cordage |
| Construction Type | Non-armored |
| Subunit Type | Gel-free |
| Jacket Color | Yellow |
| Jacket Marking | Feet |
| Total Fiber Count | 1 |

Dimensions

| | |
|-----------------------------|-------------------|
| Diameter Over Jacket | 1.7 mm 0.067 in |
|-----------------------------|-------------------|

Representative Image



Mechanical Specifications

| | |
|--|---------------------------------------|
| Minimum Bend Radius, loaded | 38 mm 1.496 in |
| Minimum Bend Radius, unloaded | 15 mm 0.591 in |
| Tensile Load, long term, maximum | 29 N 6.519 lbf |
| Tensile Load, short term, maximum | 98 N 22.031 lbf |
| Compression | 10 N/mm 57.101 lb/in |
| Compression Test Method | FOTP-41 IEC 60794-1 E3 |
| Flex | 300 cycles |
| Flex Test Method | FOTP-104 IEC 60794-1 E6 |
| Impact | 0.74 N-m 6.55 in lb |
| Impact Test Method | FOTP-25 IEC 60794-1 E4 |
| Strain | See long and short term tensile loads |
| Strain Test Method | FOTP-33 IEC 60794-1 E1 |
| Twist | 10 cycles |
| Twist Test Method | FOTP-85 IEC 60794-1 E7 |
| Vertical Rise, maximum | 500 m 1,640.42 ft |

Optical Specifications

| | |
|-------------------|---------------------------|
| Fiber Type | G.657.A2/B2 G.657.A2/B2 |
|-------------------|---------------------------|

Environmental Specifications

760238067 | P-001-SP-8G-F16YL

| | |
|--------------------------------------|---------------------------------------|
| Installation temperature | 0 °C to +70 °C (+32 °F to +158 °F) |
| Operating Temperature | -20 °C to +70 °C (-4 °F to +158 °F) |
| Storage Temperature | -40 °C to +70 °C (-40 °F to +158 °F) |
| Cable Qualification Standards | ANSI/ICEA S-83-596 Telcordia GR-409 |
| Environmental Space | Plenum |
| Flame Test Listing | NEC OFNP (ETL) and c(ETL) |
| Flame Test Method | NFPA 130 NFPA 262 |

Environmental Test Specifications

| | |
|--------------------------------------|-------------------------------------|
| Heat Age | -20 °C to +85 °C (-4 °F to +185 °F) |
| Heat Age Test Method | IEC 60794-1 F9 |
| Low High Bend | -20 °C to +70 °C (-4 °F to +158 °F) |
| Low High Bend Test Method | FOTP-37 IEC 60794-1 E11 |
| Temperature Cycle | -20 °C to +70 °C (-4 °F to +158 °F) |
| Temperature Cycle Test Method | FOTP-3 IEC 60794-1 F1 |

Packaging and Weights

| | |
|---------------------|------------------------|
| Cable weight | 3 kg/km 2.016 lb/kft |
|---------------------|------------------------|

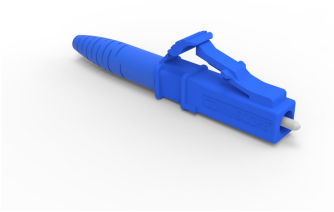
Regulatory Compliance/Certifications

| Agency | Classification |
|---------------|--|
| CHINA-ROHS | Below maximum concentration value |
| ISO 9001:2015 | Designed, manufactured and/or distributed under this quality management system |
| REACH-SVHC | Compliant as per SVHC revision on www.commscope.com/ProductCompliance |
| ROHS | Compliant |
| UK-ROHS | Compliant |



* Footnotes

Operating Temperature Specification applicable to non-terminated bulk fiber cable



LC/UPC Connector, Singlemode, Blue, Short Boot

Product Classification

| | |
|------------------------------|---|
| Regional Availability | Asia Australia/New Zealand EMEA Latin America North America |
| Portfolio | CommScope® |
| Product Type | Fiber connector |

General Specifications

| | |
|-----------------------|--------|
| Color, boot | Blue |
| Color, housing | Blue |
| Interface | LC/UPC |

Dimensions

| | |
|---------------|--------------------|
| Length | 41.6 mm 1.638 in |
|---------------|--------------------|

Material Specifications

| | |
|-------------------------|----------|
| Ferrule Material | Zirconia |
|-------------------------|----------|

Mechanical Specifications

| | |
|--|----------------|
| Cable Retention Strength, maximum | 11.24 lb @ 0 ° |
|--|----------------|

Optical Specifications

| | |
|---|---------------------------------|
| Fiber Mode | Singlemode |
| Insertion Loss Change, mating | 0.2 dB |
| Optical Components Standard | ANSI/TIA-568. 3-D IEC 61753-1 |
| Insertion Loss Change, temperature | 0.3 dB |
| Insertion Loss, maximum | 0.25 dB |
| Return Loss, minimum | 55 dB |

Regulatory Compliance/Certifications

860637435

Agency

CHINA-ROHS

ROHS

UK-ROHS

Classification

Below maximum concentration value

Compliant

Compliant

*** Footnotes****Insertion Loss Change, mating**

TIA-568: Maximum insertion loss change after 500 matings

Insertion Loss Change, temperature

Maximum insertion loss change from -10 °C to +60 °C (+14 °F to +140 °F)