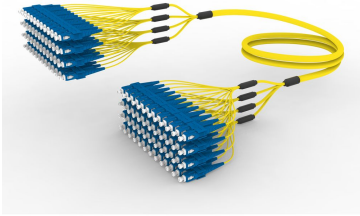


FLWSCSCAH

Base Product



SingleMode SC/UPC to SC/UPC, InstaPATCH® 360 Ruggedized Fiber Fanout Cable Assembly, 48-Fiber, Plenum

Product Classification

Regional Availability	Asia Australia/New Zealand China Europe India Latin America Middle East/Africa North America
Portfolio	CommScope®
Product Type	Ruggedized fanout
Product Brand	SYSTIMAX InstaPATCH® 360
Ordering Note	For lengths greater than 999 ft (304 m), orders must be in meters Minimum length may vary based on cable configuration

General Specifications

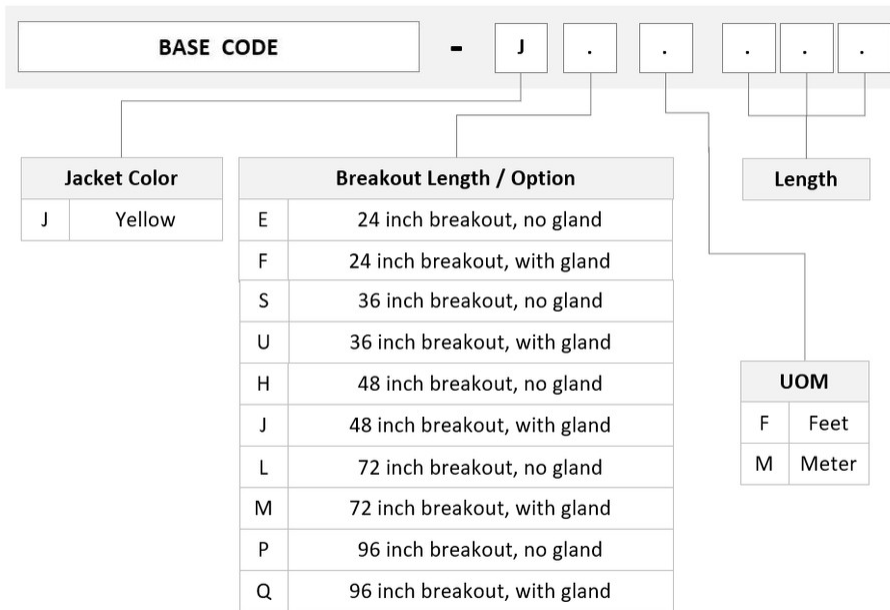
Color, boot A	Blue
Color, connector A	Blue
Color, boot B	Blue
Color, connector B	Blue
Construction Type	Stranded
Furcation Color	Yellow
Interface, Connector A	SC/UPC
Interface, Connector B	SC/UPC
Jacket Color	Yellow
Fibers per Subunit, quantity	12
Total Fibers, quantity	48

Dimensions

Cable Assembly Length Range (m)	3 – 305
Cable Assembly Length Range (ft)	8 – 999

FLWSCSCAH

Ordering Tree



Mechanical Specifications

Cable Retention Strength, maximum 11.24 lb @ 0 ° | 4.40 lb @ 90 °

Optical Specifications

Fiber Mode Singlemode

Fiber Type G.652.D | G.657.A1, TeraSPEED®

Environmental Specifications

Operating Temperature -10 °C to +60 °C (+14 °F to +140 °F)

Environmental Space Indoor | Plenum

Regulatory Compliance/Certifications

Agency

ANATEL

CHINA-ROHS

ISO 9001:2015

Classification

Compliant

Below maximum concentration value

Designed, manufactured and/or distributed under this quality management system

FLWSCSAH

REACH-SVHC	Compliant as per SVHC revision on www.commscope.com/ProductCompliance
ROHS	Compliant
UK-ROHS	Compliant



Included Products

460125768	-	TeraSPEED® Pre-Radiused SC Connector for 1.6 mm Fiber Cordage, Duplex, Singlemode
760038323	-	Fiber indoor cable, TeraSPEED® Plenum MPO Trunk, 48 fiber multi-unit with 12 fiber subunits, Singlemode G.652.D and G.657.A1, Gel-free, Feet jacket marking, Yellow jacket color
P-048-MP-8W-F12YL		

460125768

TeraSPEED® Pre-Radiused SC Connector for 1.6 mm Fiber Cordage, Duplex, Singlemode

Product Classification

Regional Availability	Asia Australia/New Zealand EMEA Latin America North America
Portfolio	CommScope®
Product Type	Fiber connector
Product Brand	TeraSPEED®

General Specifications

Body Style	Duplex
Color	Blue
Ferrule Geometry	Pre-radiused
Interface	SC/UPC

Dimensions

Length	56 mm 2.205 in
Compatible Cable Diameter	1.6 mm 0.063 in

Material Specifications

Ferrule Material	Zirconia
-------------------------	----------

Mechanical Specifications

Cable Retention Strength, maximum	11.24 lb @ 0 °
--	----------------

Optical Specifications

Fiber Type	G.652.D and G.657.A1, TeraSPEED® OS2
Insertion Loss Change, mating	0.3 dB
Optical Components Standard	ANSI/TIA-568-C.3
Insertion Loss Change, temperature	0.3 dB
Insertion Loss, typical	0.3 dB
Return Loss, minimum	55 dB

Packaging and Weights

Packaging quantity 2

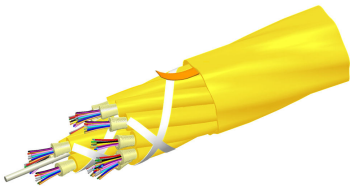
Regulatory Compliance/Certifications

Agency	Classification
ISO 9001:2015	Designed, manufactured and/or distributed under this quality management system

* Footnotes

Insertion Loss Change, mating TIA-568: Maximum insertion loss change after 500 matings

Insertion Loss Change, temperature Maximum insertion loss change from -10 °C to +60 °C (+14 °F to +140 °F)



Fiber indoor cable, TeraSPEED® Plenum MPO Trunk, 48 fiber multi-unit with 12 fiber subunits, Singlemode G.652.D and G.657.A1, Gel-free, Feet jacket marking, Yellow jacket color

Product Classification

Regional Availability	Asia Australia/New Zealand Latin America Middle East /Africa North America
Portfolio	CommScope®
Product Type	Fiber indoor cable
Product Series	P-MP

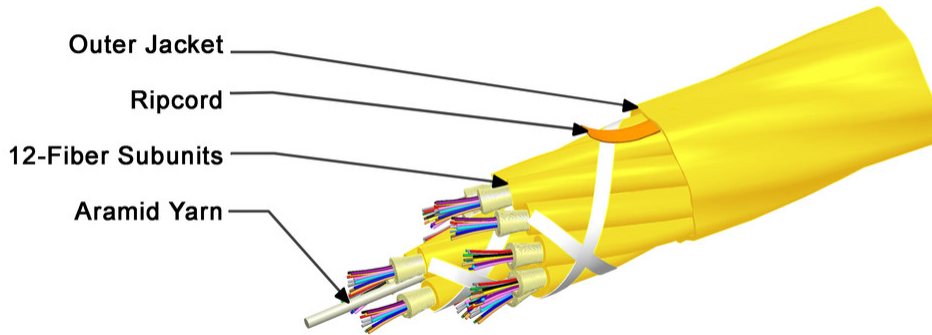
General Specifications

Cable Type	MPO trunk cable
Construction Type	Non-armored
Subunit Type	Gel-free
Jacket Color	Yellow
Jacket Marking	Feet
Subunit, quantity	4
Fibers per Subunit, quantity	12
Total Fiber Count	48

Dimensions

Buffer Tube/Subunit Diameter	3 mm 0.118 in
Diameter Over Jacket	9.1 mm 0.358 in

Representative Image



Mechanical Specifications

Minimum Bend Radius, loaded	136 mm 5.354 in
Minimum Bend Radius, unloaded	91 mm 3.583 in
Tensile Load, long term, maximum	400 N 89.924 lbf
Tensile Load, short term, maximum	1335 N 300.12 lbf
Compression	10 N/mm 57.101 lb/in
Compression Test Method	FOTP-41 IEC 60794-1 E3
Flex	300 cycles
Flex Test Method	FOTP-104 IEC 60794-1 E6
Impact	0.74 N-m 6.55 in lb
Impact Test Method	FOTP-25 IEC 60794-1 E4
Strain	See long and short term tensile loads
Strain Test Method	FOTP-33 IEC 60794-1 E1
Twist	10 cycles
Twist Test Method	FOTP-85 IEC 60794-1 E7
Vertical Rise, maximum	500 m 1,640.42 ft

Optical Specifications

Fiber Type	G.652.D and G.657.A1, TeraSPEED® OS2 OS2
-------------------	--

Environmental Specifications

Installation temperature	0 °C to +70 °C (+32 °F to +158 °F)
---------------------------------	------------------------------------

760038323 | P-048-MP-8W-F12YL

Operating Temperature	0 °C to +70 °C (+32 °F to +158 °F)
Storage Temperature	-40 °C to +70 °C (-40 °F to +158 °F)
Cable Qualification Standards	ANSI/ICEA S-83-596 Telcordia GR-409
Environmental Space	Plenum
Flame Test Listing	NEC OFNP (ETL) and c(ETL)
Flame Test Method	NFPA 130 NFPA 262

Environmental Test Specifications

Heat Age	0 °C to +85 °C (+32 °F to +185 °F)
Heat Age Test Method	IEC 60794-1 F9
Low High Bend	0 °C to +70 °C (+32 °F to +158 °F)
Low High Bend Test Method	FOTP-37 IEC 60794-1 E11
Temperature Cycle	0 °C to +70 °C (+32 °F to +158 °F)
Temperature Cycle Test Method	FOTP-3 IEC 60794-1 F1

Packaging and Weights

Cable weight	76 kg/km 51.07 lb/kft
---------------------	-------------------------

Regulatory Compliance/Certifications

Agency	Classification
CHINA-ROHS	Below maximum concentration value
ISO 9001:2015	Designed, manufactured and/or distributed under this quality management system
REACH-SVHC	Compliant as per SVHC revision on www.commscope.com/ProductCompliance
ROHS	Compliant
UK-ROHS	Compliant



* Footnotes

Operating Temperature Specification applicable to non-terminated bulk fiber cable