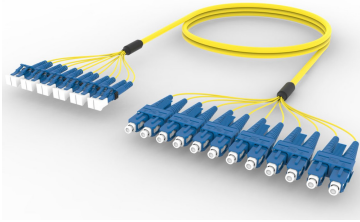


FLWLCSCAD

Base Product



Singlemode LC/UPC to SC/UPC 12-Fiber InstaPATCH® 360 Ruggedized Fanout Cable, Plenum

Product Classification

Regional Availability	Asia Australia/New Zealand China Europe India Latin America Middle East/Africa North America
Portfolio	CommScope®
Product Type	Ruggedized fanout
Product Brand	SYSTIMAX InstaPATCH® 360
Ordering Note	For lengths greater than 999 ft (304 m), orders must be in meters Minimum length may vary based on cable configuration

General Specifications

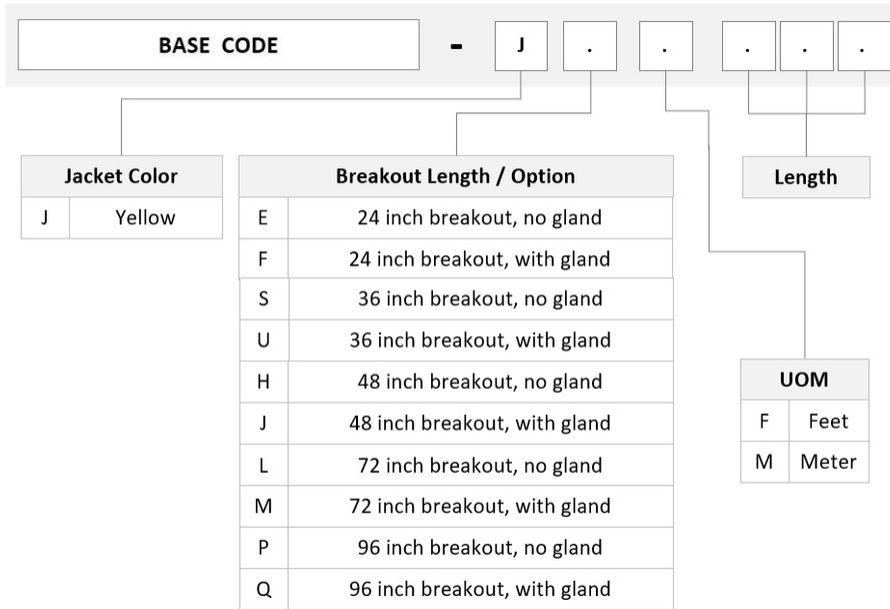
Color, boot A	Blue
Color, connector A	Blue
Color, boot B	Blue
Color, connector B	Blue
Construction Type	Stranded
Furcation Color	Yellow
Interface, Connector A	LC/UPC
Interface, Connector B	SC/UPC
Jacket Color	Yellow
Fibers per Subunit, quantity	12
Total Fibers, quantity	12

Dimensions

Cable Assembly Length Range (m)	3 – 305
Cable Assembly Length Range (ft)	8 – 999

Ordering Tree

FLWLCSCAD



Mechanical Specifications

Cable Retention Strength, maximum 11.24 lb @ 0° | 4.40 lb @ 90°

Optical Specifications

Fiber Mode Singlemode

Fiber Type G.652.D | G.657.A1, TeraSPEED®

Environmental Specifications

Operating Temperature -10 °C to +60 °C (+14 °F to +140 °F)

Environmental Space Indoor | Plenum

Regulatory Compliance/Certifications

Agency	Classification
ANATEL	Compliant
CHINA-ROHS	Below maximum concentration value
ISO 9001:2015	Designed, manufactured and/or distributed under this quality management system
REACH-SVHC	Compliant as per SVHC revision on www.commscope.com/ProductCompliance
ROHS	Compliant

FLWLCSCAD

UK-ROHS

Compliant



Included Products

- 460125206 – TeraSPEED® Pre-Radiused LC Connector duplex for 1.6 mm Fiber, Singlemode
- 460125768 – TeraSPEED® Pre-Radiused SC Connector for 1.6 mm Fiber Cordage, Duplex, Singlemode
- P-012-MP-8W-F12 – Fiber indoor cable, TeraSPEED® Plenum for MPO Trunks, 12 fiber, Singlemode G.652.D and G.657.A1, Feet jacket marking