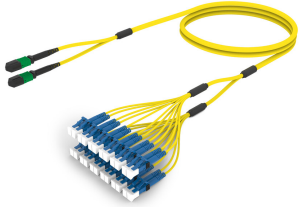


F4WMPLCAF

Base Product



Singlemode MPO (Unpinned) to LC/UPC, InstaPATCH® 360 Ruggedized Fanout Cable, 24-Fiber, Low Smoke Zero Halogen B2ca

Product Classification

| | |
|------------------------------|---|
| Regional Availability | Europe |
| Portfolio | CommScope® |
| Product Type | Ruggedized fanout |
| Product Brand | SYSTIMAX InstaPATCH® 360 |
| Ordering Note | For lengths greater than 999 ft (304 m), orders must be in meters Minimum length may vary based on cable configuration Not available in the United States or Canada |

General Specifications

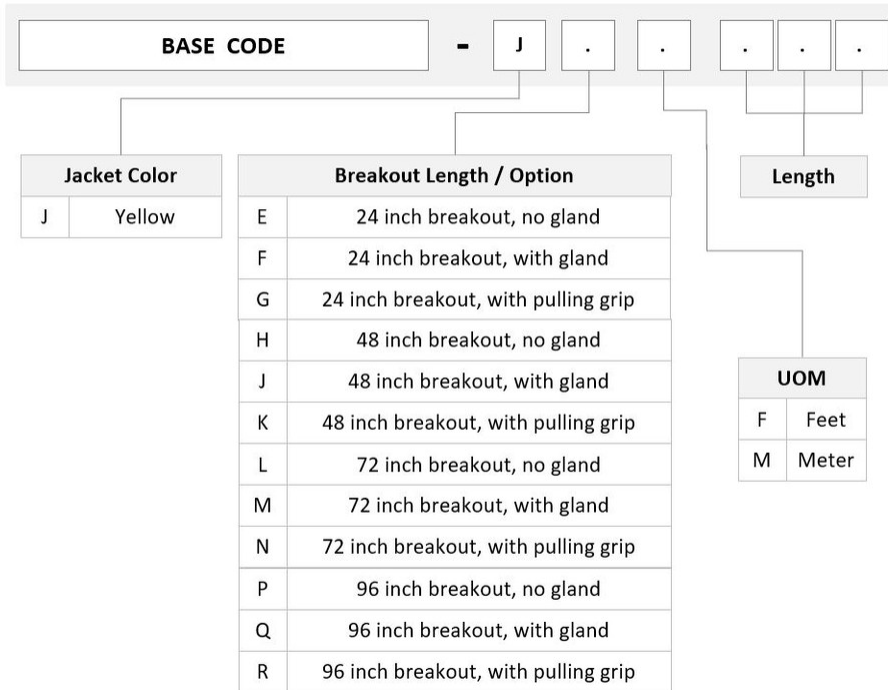
| | |
|-------------------------------------|-------------------|
| Color, boot A | Black |
| Color, connector A | Green |
| Color, boot B | Blue |
| Color, connector B | Blue |
| Construction Type | Stranded |
| Furcation Color | Yellow |
| Interface, Connector A | MPO-12/APC Female |
| Interface, Connector B | LC/UPC |
| Jacket Color | Yellow |
| Polarity | Method B (LL) |
| Fibers per Subunit, quantity | 12 |
| Total Fibers, quantity | 24 |

Dimensions

| | |
|---|---------|
| Cable Assembly Length Range (m) | 3 – 999 |
| Cable Assembly Length Range (ft) | 7 – 999 |

F4WMPLCAF

Ordering Tree



Mechanical Specifications

Cable Retention Strength, maximum 11.24 lb @ 0° | 4.40 lb @ 90°

Optical Specifications

Fiber Mode Singlemode

Fiber Type G.652.D | G.657.A1, TeraSPEED®

Environmental Specifications

Operating Temperature -10 °C to +60 °C (+14 °F to +140 °F)

EN50575 CPR Cable EuroClass Fire Performance B2ca

Environmental Space Indoor | Low Smoke Zero Halogen (LSZH)

Regulatory Compliance/Certifications

Agency **Classification**

ANATEL Compliant

F4WMPLCAF

| | |
|---------------|--|
| CHINA-ROHS | Below maximum concentration value |
| ISO 9001:2015 | Designed, manufactured and/or distributed under this quality management system |
| REACH-SVHC | Compliant as per SVHC revision on www.commscope.com/ProductCompliance |
| ROHS | Compliant |
| UK-ROHS | Compliant |



Included Products

| | | |
|-----------------------------------|---|---|
| 760239612 N-024-MP-8W-F12YL/B2 | - | Fiber indoor cable, TeraSPEED® Low Smoke Zero Halogen Riser MPO Trunk, 24 fibers, 12 fiber subunits, Singlemode G.652.D and G.657.A1, Gel-free, Feet jacket marking, Yellow jacket color, B2ca Flame rating |
| 860366137 | - | MPO12, LOW LOSS, FEMALE, Singlemode, GREEN, 3mm |
| 860637435 | - | LC/UPC Connector, Singlemode, Blue, Short Boot |



Fiber indoor cable, TeraSPEED® Low Smoke Zero Halogen Riser MPO Trunk, 24 fibers, 12 fiber subunits, Singlemode G.652.D and G.657.A1, Gel-free, Feet jacket marking, Yellow jacket color, B2ca Flame rating

Product Classification

| | |
|------------------------------|--------------------|
| Regional Availability | Asia EMEA |
| Portfolio | CommScope® |
| Product Type | Fiber indoor cable |
| Product Series | N-MP |

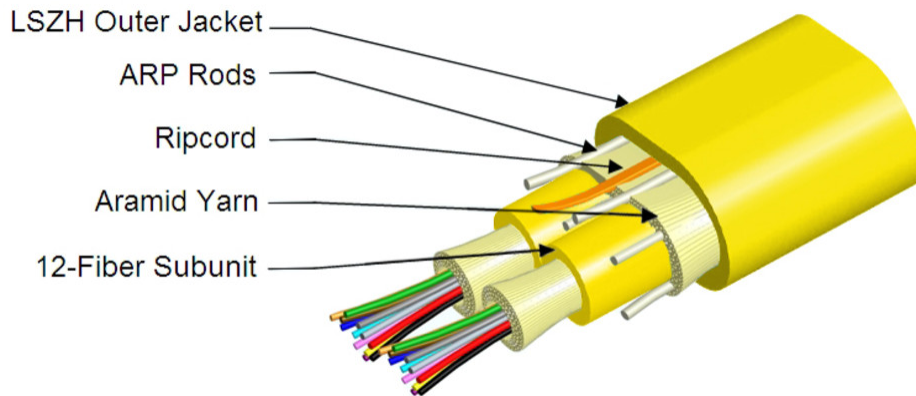
General Specifications

| | |
|-------------------------------------|-----------------|
| Cable Type | MPO trunk cable |
| Construction Type | Non-armored |
| Subunit Type | Gel-free |
| Jacket Color | Yellow |
| Jacket Marking | Feet |
| Subunit, quantity | 2 |
| Fibers per Subunit, quantity | 12 |
| Total Fiber Count | 24 |

Dimensions

| | |
|-------------------------------------|-------------------|
| Height Over Jacket | 6.4 mm 0.252 in |
| Width Over Jacket | 9.4 mm 0.37 in |
| Buffer Tube/Subunit Diameter | 3 mm 0.118 in |

Representative Image



Mechanical Specifications

| | |
|--|---------------------------------------|
| Minimum Bend Radius, loaded | 96 mm 3.78 in |
| Minimum Bend Radius, unloaded | 64 mm 2.52 in |
| Tensile Load, long term, maximum | 200 N 44.962 lbf |
| Tensile Load, short term, maximum | 667 N 149.948 lbf |
| Compression | 10 N/mm 57.101 lb/in |
| Compression Test Method | FOTP-41 IEC 60794-1 E3 |
| Flex | 25 cycles |
| Flex Test Method | FOTP-104 IEC 60794-1 E6 |
| Impact | 2.94 N-m 26.021 in lb |
| Impact Test Method | FOTP-25 IEC 60794-1 E4 |
| Strain | See long and short term tensile loads |
| Strain Test Method | FOTP-33 IEC 60794-1 E1 |
| Twist | 10 cycles |
| Twist Test Method | FOTP-85 IEC 60794-1 E7 |
| Vertical Rise, maximum | 317 m 1,040.026 ft |

Optical Specifications

| | |
|-------------------|--|
| Fiber Type | G.652.D and G.657.A1, TeraSPEED® OS2 OS2 |
|-------------------|--|

Environmental Specifications

| | |
|---------------------------------|------------------------------------|
| Installation temperature | 0 °C to +50 °C (+32 °F to +122 °F) |
|---------------------------------|------------------------------------|

760239612 | N-024-MP-8W-F12YL/B2

| | |
|---|---------------------------------------|
| Operating Temperature | 0 °C to +60 °C (+32 °F to +140 °F) |
| Storage Temperature | -40 °C to +70 °C (-40 °F to +158 °F) |
| Cable Qualification Standards | ANSI/ICEA S-83-596 Telcordia GR-409 |
| EN50575 CPR Cable EuroClass Fire Performance | B2ca |
| EN50575 CPR Cable EuroClass Smoke Rating | s1a |
| EN50575 CPR Cable EuroClass Droplets Rating | d0 |
| EN50575 CPR Cable EuroClass Acidity Rating | a1 |
| Environmental Space | Low Smoke Zero Halogen (LSZH) |
| Flame Test Method | IEC 60754-2 IEC 61034-2 |

Environmental Test Specifications

| | |
|--------------------------------------|------------------------------------|
| Heat Age | 0 °C to +85 °C (+32 °F to +185 °F) |
| Heat Age Test Method | IEC 60794-1 F9 |
| Low High Bend | 0 °C to +70 °C (+32 °F to +158 °F) |
| Low High Bend Test Method | FOTP-37 IEC 60794-1 E11 |
| Temperature Cycle | 0 °C to +70 °C (+32 °F to +158 °F) |
| Temperature Cycle Test Method | FOTP-3 IEC 60794-1 F1 |

Packaging and Weights

| | |
|---------------------|--------------------------|
| Cable weight | 42 kg/km 28.223 lb/kft |
|---------------------|--------------------------|

Regulatory Compliance/Certifications

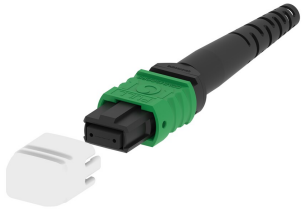
| Agency | Classification |
|---------------|--|
| CENELEC | EN 50575 compliant, Declaration of Performance (DoP) available |
| CHINA-ROHS | Below maximum concentration value |
| ISO 9001:2015 | Designed, manufactured and/or distributed under this quality management system |
| REACH-SVHC | Compliant as per SVHC revision on www.commscope.com/ProductCompliance |
| ROHS | Compliant |
| UK-ROHS | Compliant |



* Footnotes

Operating Temperature Specification applicable to non-terminated bulk fiber cable

860366137



MPO12, LOW LOSS, FEMALE, Singlemode, GREEN, 3mm

Product Classification

| | |
|------------------------------|---|
| Regional Availability | Asia Australia/New Zealand EMEA Latin America North America |
| Portfolio | CommScope® |
| Product Type | Fiber connector |
| Product Brand | TeraSPEED® |

General Specifications

| | |
|--------------------------|----------------|
| Color | Green |
| Color, boot | Black |
| Ferrule Geometry | Angled |
| Interface | MPO/APC Female |
| Interface Feature | Unpinned |
| Total Fiber Count | 12 |

Dimensions

| | |
|----------------------------------|--------------------|
| Length | 60.1 mm 2.366 in |
| Compatible Cable Diameter | 3 mm 0.118 in |

Material Specifications

| | |
|-------------------------|---------|
| Ferrule Material | Polymer |
|-------------------------|---------|

Mechanical Specifications

| | |
|--|----------------|
| Cable Retention Strength, maximum | 11.24 lb @ 0 ° |
|--|----------------|

Optical Specifications

| | |
|--------------------------------------|--|
| Fiber Mode | Singlemode |
| Fiber Type | G.652.D and G.657.A1, TeraSPEED® OS2 |
| Insertion Loss Change, mating | 0.3 dB |
| Optical Components Standard | ANSI/TIA-568-C.3 |

860366137

| | |
|---|---------|
| Insertion Loss Change, temperature | 0.3 dB |
| Insertion Loss, maximum | 0.67 dB |
| Return Loss, minimum | 55 dB |

Packaging and Weights

| | |
|---------------------------|---|
| Packaging quantity | 1 |
|---------------------------|---|

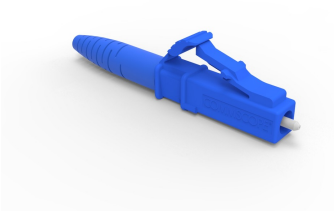
Regulatory Compliance/Certifications

| Agency | Classification |
|---------------|--|
| CHINA-ROHS | Below maximum concentration value |
| ISO 9001:2015 | Designed, manufactured and/or distributed under this quality management system |
| REACH-SVHC | Compliant as per SVHC revision on www.commscope.com/ProductCompliance |
| ROHS | Compliant |
| UK-ROHS | Compliant |



* Footnotes

| | |
|---|---|
| Insertion Loss Change, mating | TIA-568: Maximum insertion loss change after 500 matings |
| Insertion Loss Change, temperature | Maximum insertion loss change from -10 °C to +60 °C (+14 °F to +140 °F) |



LC/UPC Connector, Singlemode, Blue, Short Boot

Product Classification

| | |
|------------------------------|---|
| Regional Availability | Asia Australia/New Zealand EMEA Latin America North America |
| Portfolio | CommScope® |
| Product Type | Fiber connector |

General Specifications

| | |
|-----------------------|--------|
| Color, boot | Blue |
| Color, housing | Blue |
| Interface | LC/UPC |

Dimensions

| | |
|---------------|--------------------|
| Length | 41.6 mm 1.638 in |
|---------------|--------------------|

Material Specifications

| | |
|-------------------------|----------|
| Ferrule Material | Zirconia |
|-------------------------|----------|

Mechanical Specifications

| | |
|--|----------------|
| Cable Retention Strength, maximum | 11.24 lb @ 0 ° |
|--|----------------|

Optical Specifications

| | |
|---|---------------------------------|
| Fiber Mode | Singlemode |
| Insertion Loss Change, mating | 0.2 dB |
| Optical Components Standard | ANSI/TIA-568. 3-D IEC 61753-1 |
| Insertion Loss Change, temperature | 0.3 dB |
| Insertion Loss, maximum | 0.25 dB |
| Return Loss, minimum | 55 dB |

Regulatory Compliance/Certifications

Agency

CHINA-ROHS

ROHS

UK-ROHS

**Classification**

Below maximum concentration value

Compliant

Compliant

* Footnotes

Insertion Loss Change, mating

TIA-568: Maximum insertion loss change after 500 matings

Insertion Loss Change, temperature

Maximum insertion loss change from -10 °C to +60 °C (+14 °F to +140 °F)