

A62395-000 | FOSC-400A8-NT-0-NNN



FOSC® 400 A8 Fiber Optic Splice Closure, Heat Shrink Cable sealing, no pre-installed trays

- Single-ended, O-ring sealed dome closure for splicing feeder and distribution cables
- Compatible with most common cable types: e.g. loose tube, central core, ribbon fiber
- FOSC splice trays hinged for access to any splice without disturbing other trays
- Closure can be used in aerial, pedestal and underground (up to 5 meters) environments
- Compatible with CommScope's CWDM modules and optical splitter trays

Product Classification

Regional Availability	Asia EMEA
Product Type	Single-ended, round fiber closure
Product Brand	FOSC®
Product Series	FOSC 400

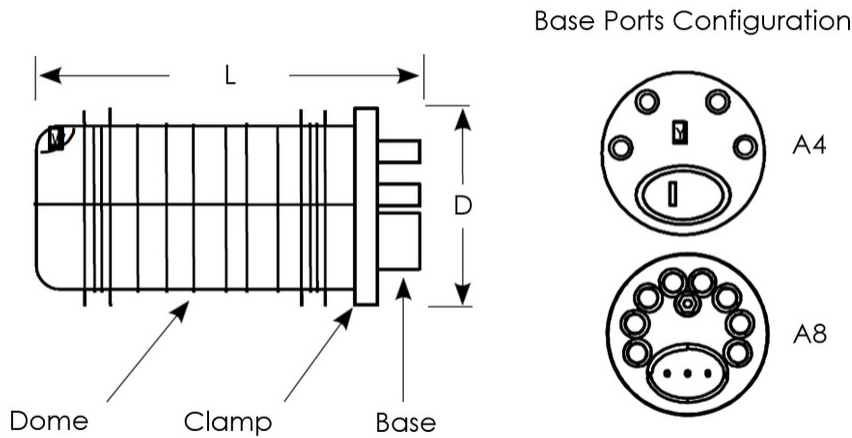
General Specifications

Cable Blocking Components	None
Cable Entry Drop Port Style	Round
Cable Entry Main Port Style	Oval
Cable Ports Quantity, total	1 oval port (2 cables) + 8 round ports
Cable Sealing Type	Heat shrink
Closure Sealing Type	Dome-to-base clamp with O-ring
Closure Style	Single-ended
Color	Black
Flash Test Valve	None
Ground Feed-through	None
Mounting	Pole Strand Wall
Network Area Type	Feeder
Splice Tray Included, quantity	0
Splice Tray Type Included	No trays
Splicing Capacity, Mass Fusion, maximum	144
Splicing Capacity, Single Fusion, maximum	96
Splicing Capacity, Single Splice, 12 fibers, maximum	96

A62395-000 | FOSC-400A8-NT-0-NNN

Splicing Capacity, Single Splice, 6 fibers, maximum	48
Splicing Type, Supported	Single fusion
Dimensions	
Length	420 mm 16.535 in
Diameter	150 mm 5.906 in
Diameter, with clamp	180 mm 7.087 in
Main Cable Diameter, maximum	25 mm 0.984 in

Dimension Drawing



Ordering Tree

A62395-000 | FOSC-400A8-NT-0-NNN

FOSC - 400 X - X - X - X X X

Closure size

A4	420mm - 4 round ports
B4	540mm - 4 round ports
D5	710mm - 5 round ports
A8	410mm - 8 round ports ¹⁾
A5	420mm - 4 round ports
B2	540mm - 2 round ports
D5/B	505mm - 5 round ports

Tray type

NT		Splices in splice protectors at tray exterior			
		A4	A8	B2, B4, D5/B	D5
S12	12 SMOUV splice protectors (4.5mm)			X	
S24	24 SMOUV splice protectors (4.5mm)	X	X	X	
A24	24 ANT splice protectors	X	X	X	
4R4	4 splice protectors for ribbon cable with 4 fibers	X	X		
6R4	6 splice protectors for ribbon cable with 4 fibers			X	
		Splices stored in modules at tray interior			
		A4	A8	B2, B4, D5/B	D5
12	12 splice protectors (2 modules, 6 splices/module)	X	X	X	
24	24 splice protectors (2 modules, 12 splices/module)	X	X	X	
36	36 splice protectors (6 modules, 6 splices/module)				X
S96	96 SMOUV splice protectors (4.5mm)				X
I96	96 SMOUV splice protectors (60 mm)				X
A96	96 ANT splice protectors				X
RT24	24 splices for ribbon cable with 12 fibers (4 modules, 6 splices/module)				X

¹⁾ A8 closure can accept a mix of standard and slim trays; please contact your local sales representative.

²⁾ Maximum 8 trays in case of S6 or A6 tray type

³⁾ B closure can initially be fitted with trays; however, retrofitting a standard "B" closure (delivered with 4 trays or fewer) with a 5th and 6th tray is not possible. The B closure can be ordered with up to 5 trays pre-installed and capacity for later addition of a 6th tray (FOSC-400B4XXX/6...).

If 5 or 6 trays are required, a storage basket cannot be used.

⁴⁾ If 7 or 8 trays are required, a storage basket cannot be used.

Flash test valve

V	Pre-installed flash test valve
N	No flash test valve

Ground feedthrough

G	Pre-installed ground feedthrough
N	No ground feedthrough

Moisture cable blocking

N	No blocking
B	Blocking

Number of splice trays

0	No trays
Closure size	
1...3	A4
1...4/8	A8 ¹⁾
1...6	B ²⁾
1...12	D5/B ³⁾
1...8	D5 ⁴⁾

Material Specifications

Material Type

Impact-resistant polymer

Environmental Specifications

Environmental Space

Below ground | Buried

Qualification Standards

IEC 61300, 6 m waterhead

Packaging and Weights

Packaging quantity

1

Packaging Type

Box | Carton

Weight, net

2.4 kg | 5.291 lb

Regulatory Compliance/Certifications

Agency	Classification
CHINA-ROHS	Below maximum concentration value
ISO 9001:2015	Designed, manufactured and/or distributed under this quality management system
REACH-SVHC	Compliant as per SVHC revision on www.commscope.com/ProductCompliance
ROHS	Compliant

