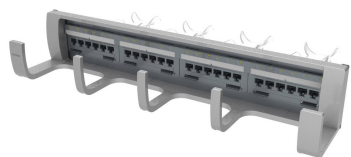


760201269 | 360-iP-PMAX-GS6-24



SYSTIMAX 360™ iPatch® PATCHMAX GS6 U/UTP Patch Panel, 24 port

Product Classification

Regional Availability

Asia | Australia/New Zealand | EMEA | Latin America | North America

Portfolio

SYSTIMAX®

Product Type

RJ45 patch panel

Product Brand

SYSTIMAX 360™ | iPatch®

General Specifications

ANSI/TIA Category

6A

Cable Type

Unshielded

Color

Silver

Intelligence Type

iPatch® enabled

Panel Style

Straight

Rack Units

2

Total Ports, quantity

24

Wiring

T568A | T568B

Dimensions

Height

88.9 mm | 3.5 in

Width

482.6 mm | 19 in

Depth

206.5 mm | 8.13 in

Compatible Diameter Over Dielectric, maximum

1.168 mm | 0.046 in

Electrical Specifications

Current Rating at Temperature

1.5 A @ 20 °C | 1.5 A @ 68 °F

Dielectric Withstand Voltage, RMS, conductive surface

1,500 Vac @ 60 Hz

Insulation Resistance, minimum

500 MOhm

Mechanical Specifications

Plug Insertion Life, minimum 750 times

Environmental Specifications

Operating Temperature -10 °C to +60 °C (+14 °F to +140 °F)

Storage Temperature -40 °C to +70 °C (-40 °F to +158 °F)

Safety Standard UL | cUL

Packaging and Weights

Packaging quantity 1

Regulatory Compliance/Certifications

Agency	Classification
CHINA-ROHS	Below maximum concentration value
ISO 9001:2015	Designed, manufactured and/or distributed under this quality management system
REACH-SVHC	Compliant as per SVHC revision on www.commscope.com/ProductCompliance
ROHS	Compliant
UK-ROHS	Compliant

