



FOSC™400 B4 Fire Retardant Fiber Optic Splice Closure, Heat Shrink Cable sealing, one pre-installed ribbon tray, with test valve

- Single-ended, O-ring sealed dome closure for splicing feeder and distribution cables
- Compatible with most common cable types: e.g. loose tube, central core, ribbon fiber
- FOSC splice trays hinged for access to any splice without disturbing other trays
- Closure can be used in aerial, pedestal and underground (up to 5 meters) environments
- Compatible with CommScope's CWDM modules and optical splitter trays

Product Classification

| | |
|------------------------------|-----------------------------------|
| Product Type | Single-ended, round fiber closure |
| Regional Availability | Latin America North America |
| Product Series | FOSC 400 |
| Product Brand | FOSC™ |

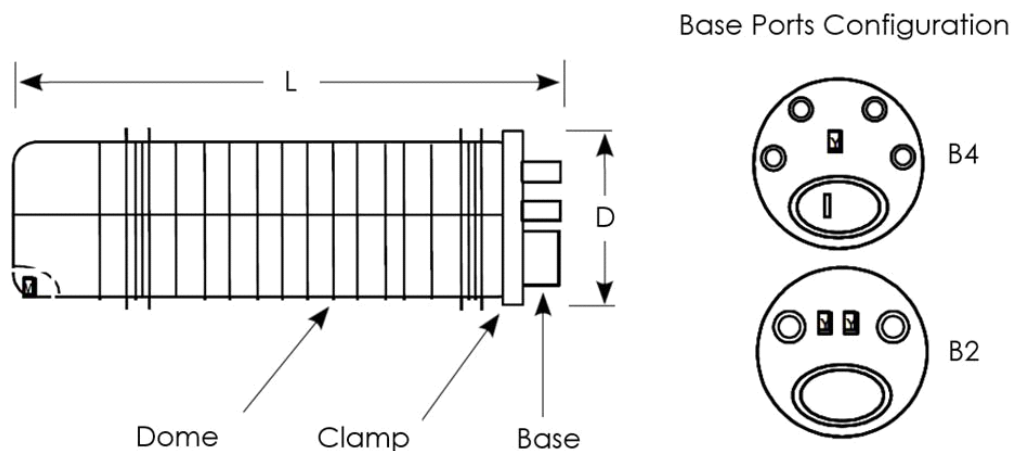
General Specifications

| | |
|---|----------------|
| Splicing Type, Supported | Single fusion |
| Splicing Capacity, Mass Fusion, maximum | 144 |
| Splicing Capacity, Single Fusion, maximum | 96 |
| Color | White |
| Network Area Type | Feeder |
| Package, quantity | 1 |
| Packaging Type | Box Carton |
| Splice Tray Included, quantity | 1 |
| Splice Tray Type Included | 12-way, ribbon |
| Splicing Capacity, Single Splice, 12 fibers, maximum | 96 |
| Splicing Capacity, Single Splice, 6 fibers, maximum | 48 |

Dimensions

| | |
|-------------------------------------|----------------------|
| Main Cable Diameter, maximum | 25.00 mm |
| Diameter | 150.00 mm 5.91 in |
| Diameter, with clamp | 180 mm 7 in |
| Length | 540.00 mm 21.26 in |
| Weight | 2.50 kg 5.51 lb |

Dimension Drawing



Mechanical Specifications

| | |
|------------------------------------|--------------------------------|
| Cable Sealing Type | Heat shrink |
| Cable Entry Drop Port Style | Round |
| Cable Entry Main Port Style | Oval |
| Cable Ports, quantity | 5 |
| Closure Sealing Type | Dome-to-base clamp with O-ring |
| Closure Style | Single-ended |
| Material Type | Impact-resistant polymer |
| Mount Type | Pole Strand Wall |

Environmental Specifications

| | |
|-------------------------------|------------------------------------|
| Environmental Space | Below ground Buried |
| Qualification Standard | IEC 61300, 6 m waterhead |
| Water Resistance | Flash test valve at 5 psi (40 kPa) |

Regulatory Compliance/Certifications

| | |
|-----------------|--|
| Agency | Classification |
| RoHS 2011/65/EU | Compliant |
| ISO 9001:2015 | Designed, manufactured and/or distributed under this quality management system |

