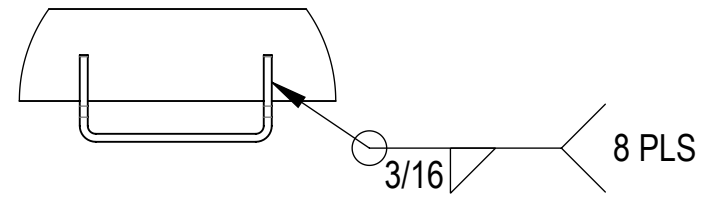
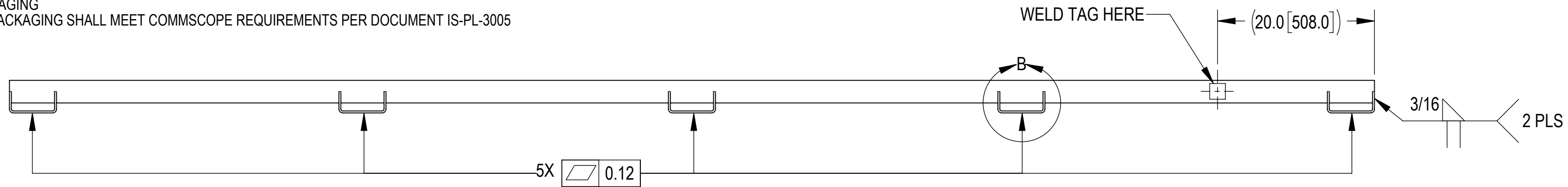
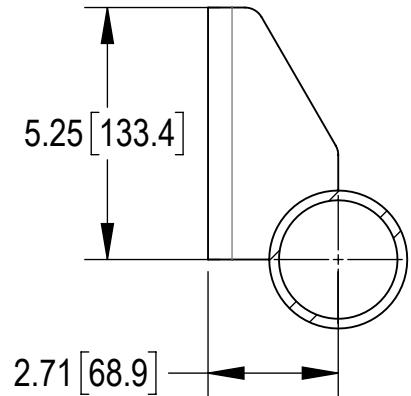
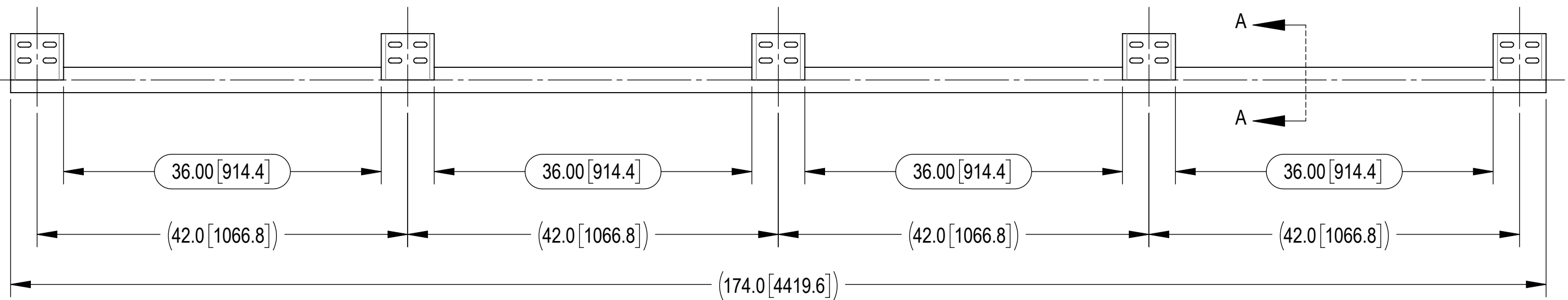


- 1.0 GENERAL NOTES
 - 1.1 ALL METRIC DIMENSIONS ARE IN BRACKETS [X.X]
 - 1.2 FEATURES CRITICAL TO QUALITY ARE INDICATED IN ROUNDED BOX (X.X)
 - 1.3 3D DIGITAL FILES ARE FOR REFERENCE. IN CASE OF CONFLICT FOLLOW PDF DRAWING
 - 1.4 WELD AREAS NOTED ARE CRITICAL TO QUALITY
- 2.0 DESIGN NOTES
- 3.0 MANUFACTURING/SPECIAL REQUIREMENTS
 - 3.1 BREAK SHARP EDGES AND DEBURR PART FOR SAFE HANDLING
 - 3.2 WELDING:
 - 3.2.A ALL WELDING SHALL CONFORM TO AWS D1.1, STEEL STRUCTURAL WELDING CODE
 - 3.2.B WELDING WORKMANSHIP SHALL BE PER AWS D1.1, TABLE 8.1 (VISUAL INSPECTION)
 - 3.2.C ALL WELDING SHALL BE PERFORMED BY CERTIFIED WELDERS
 - 3.2.D ALL WELD SLAG, SPATTER AND SHARP SHALL BE REMOVED PRIOR TO FINISH
 - 3.2.E WELDER ID TAG SHALL BE LOCATED APPROXIMATELY WHERE SHOWN FOR MANUFACTURER & WELDER TRACEABILITY. TAG SHALL HAVE MANUFACTURE ID (XXX) FOR VENDOR SUPPLIED AND WELDER ID (XXX) FOR COMMSCOPE/VENDOR WELDER. TAG CAN BE UP TO 1/8" THICK & UP TO 2" SQUARE WITH STAMPED/ENGRAVED TEXT NO LESS THAN 1/4" IN HEIGHT
 - 3.3 GALVANIZE PER ASTM A123
 - 3.4 MARK WITH PART NUMBER, REVISION, AND VENDOR ID WITH ETCH, STAMP OR LABEL. CHARACTERS TO BE 0.12" TO 0.24" HIGH AND LEGIBLE TO THE UNAIDED EYE.
- 4.0 TEST
- 5.0 PACKAGING
 - 5.1 PACKAGING SHALL MEET COMMSCOPE REQUIREMENTS PER DOCUMENT IS-PL-3005

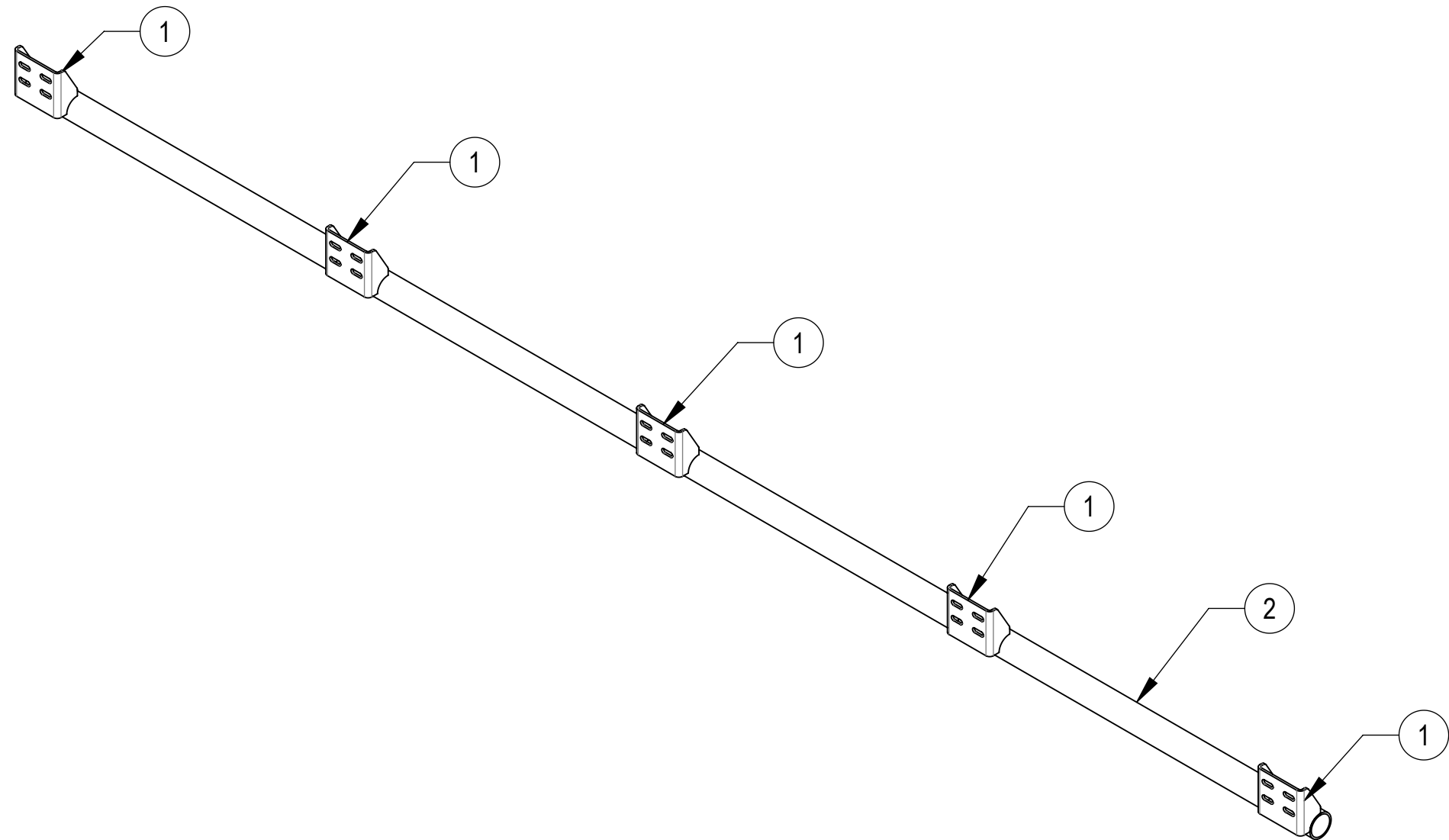
REVISIONS			
REV.	DESCRIPTION	DATE	APPROVED
A	INITIAL RELEASE	JL1183 18OCT23	XK1001 40179678CMO



DETAIL B
SCALE 1 : 6



VIEW A-A



MID	FINISH
SFG-FP-14.5-5-42	GALV A123
SFG-FP-14.5-5-42-B	N/A

COMMSCOPE, INC. OF NORTH CAROLINA										
TOLERANCES					SAP MATERIAL MASTER					
1 PLACE .X[X] ± 0.2[6.3]		3 PLACE .XXX[X] ± 0.060[1.5]			SEE TABLE					
2 PLACE .XX[X] ± 0.12[3.0]		ANGLES ± 2°			FINISH SEE TABLE					
MATERIAL					MATERIAL					
FACE-PIPE, 2.88" X 14.5', 5-POS, 42"										
UNLESS OTHERWISE SPECIFIED DIMENSIONS ARE IN INCHES INTERPRET PER ANSI Y 14.5M-1994		NAME	DATE	TITLE						
CE	JL1183	18OCT23	SFG-FP-14.5-5-42							
RW	JL1183	10/20/2023								
AD	XK1001	10/20/2023								
RE	JL1183	10/23/2023								
ECN 40179678CMO		SCALE		DOCUMENT NO.						
		1:12		SFG-FP-14.5-5-42						
SIZE	Auth Group	INSL	MODEL			DRAWING				SHEET
C			VERSION	STATUS	REVISION	VERSION	STATUS	REVISION	1 OF 1	
			00	RE	A	00	RE	A		

DENSITY	100.02	lbs/in ³
MASS	100.02	lbs
VOLUME	351.77	in ³
SURFACE AREA	3419.84	in ²
HEIGHT	6.69"	
LENGTH	174.0"	
WIDTH	4.15"	